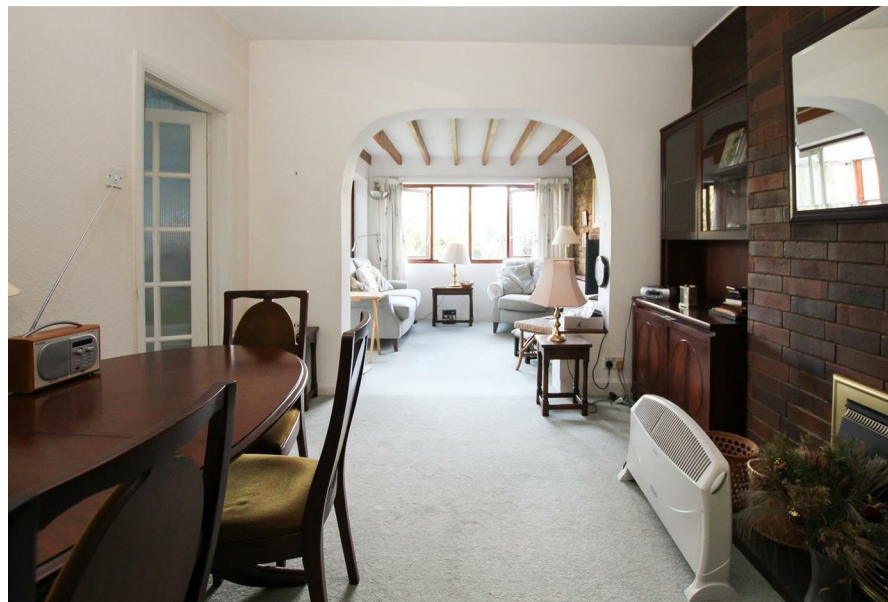


Whilst every attempt has been made to ensure the accuracy of the floor plan contained here, measurements of doors, windows, rooms and any other items are approximate and no responsibility is taken for any error, omission, or mis-statement. This plan is for illustrative purposes only and should be used as such by any prospective purchaser. The services, systems and appliances shown have not been tested and no guarantee as to their operability or efficiency can be given
Made with Metropix ©2019



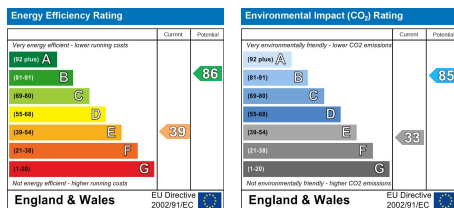
17 Nalla Gardens, Chelmsford, CMI 4AU

Offered for sale with no onward chain, is this extended two bedroom semi-detached bungalow offering spacious accommodation throughout, situated within easy reach of Chelmsford City Centre and Broomfield Road shopping Parade.

Requiring some modernisation, the accommodation comprises two double bedrooms, a bathroom, a large lounge/diner opening to a sunroom and conservatory, plus a fitted kitchen. To the rear is a good size unoverlooked garden, with mature shrubs and fruit trees, whilst the front garden offers excellent scope for off-street parking and gives access to the rear.

In our opinion, this bungalow offers a fantastic opportunity for further improvement and possible development, subject to planning permission.

Guide Price £299,995



SERVICES:

Local Authority: Chelmsford
Council tax band: C
Post code: CMI 4AU

VIEWING:

Strictly by prior arrangement with Keith Ashton Estate Agents

OPENING HOURS:

Monday to Friday: 8.45AM - 6.30PM | Saturdays: 9AM - 5.30PM | Sundays: 10AM - 2PM

MORTGAGE INFORMATION: We offer the additional facility of an in-house Independent Financial Adviser who will access all mortgage lenders with the purpose of providing you with the benefit of choice. For quotations or comparables please call 01277 260858 or visit our interactive website at www.mortgagebusiness.net



We the Agent have not tested any apparatus, fittings or services for this property. The plot size is intended merely as a guide and has not been officially measured or verified by the Agent. Photographs are for illustration only and may depict items which are not for sale or included in the sale of the property. As part of the service we offer we may recommend ancillary services to you which we believe may help you with your property transaction. We wish to make you aware, that should you decide to use these services we will receive a referral fee. For full and detailed information please visit 'terms and conditions' on our website www.keithashton.co.uk

Brentwood
Tel. 01277 260858

Village Office
Tel. 01277 375757

Lettings Office
Tel. 01277 202200

Explore more @ www.keithashton.co.uk

