



Renton
& Parr

Premium

WHIRLOW HOUSE | THE RIDGE | LINTON | WETHERBY | WEST
YORKSHIRE | LS22 4HJ

WHIRLOW HOUSE, THE RIDGE, LINTON, WETHERBY, WEST YORKSHIRE, LS22 4HJ

Wetherby 1.5 miles, Harrogate 9 miles, Leeds 12 miles, York 20 miles, A1 2 miles (all distances approx)

An impressive mock Tudor style five bedroom detached family house enjoying an excellent private tree-lined avenue off Linton Lane.

Whirlow House provides spacious and well-appointed family accommodation immaculately presented and recently upgraded by the present owners.

8ft high ceilings enhance the feeling of space with two reception rooms including 24ft lounge with inglenook fireplace, separate dining room and refitted breakfast kitchen. There is also an impressive open reception hall, utility and downstairs bathroom w.c., On the first floor, there are four double bedrooms with a fifth bedroom presently used as a dressing room. Both en-suite bathroom and house bathroom have been refitted with modern stylish white suites

To the outside, the property is approached through electric wrought iron entrance gates providing ample off road parking, together with integral double garage.

The gardens are also private and south facing to the rear with three patio areas and pond with water fall.

The village of Linton remains one of the most sought after residential locations in the Wharfe Valley and The Ridge arguably one of Linton's most highly regarded addresses.

Located off Linton Lane, The Ridge comprises a private road of quality homes shaded by mature trees and hedgerows and is a short distance from the village hall and the 450 year old Windmill Inn packed full of old English character with rustic old beams and charming stone floors.

Linton is conveniently placed for daily travel to Leeds, Harrogate and York with excellent shops and schools in the neighbouring market town of Wetherby. The area offers a wide variety of sporting and recreational facilities including the local golf course opposite. There are intercity rail links at both Leeds and York and ease of access to the regions motorway networks infrastructure along with Leeds/Bradford international airport for international commuters.





Premium

WHIRLOW HOUSE | THE RIDGE | LINTON | WETHERBY | WEST YORKSHIRE | LS22 4HJ



LINTON

The Village of Linton on Wharfe must rank as one of the most attractive villages in West Yorkshire appealing to the discriminating purchaser requiring beauty of position combined with convenience and accessibility. Some 11 miles from Leeds and conveniently placed for York, Harrogate, Bradford and other West Yorkshire centres. Road access throughout the county is good, conveniently placed for the Leeds/Bradford Airport and 2 miles from the A1 High Road.

DIRECTIONS

Proceeding from Wetherby along Westgate take the first left turning at the mini roundabout into Linton Road. Left into Linton Lane and after a few hundred yards turn right into The Ridge where Whirlow House is situated on the left hand side.

THE PROPERTY

A spacious and well appointed four/five bedroom detached family house recently modernised and improved with gas fired central heating and double glazed windows, the accommodation in further detail comprises :-

ENTRANCE PORCH

Access to :-

RECEPTION HALL

13' 10" x 13' 9" (4.22m x 4.19m)
Double glazed window to front, staircase to first floor with cloaks cupboard beneath, two radiators.

LOUNGE

24' 3" x 13' 1" (7.39m x 3.99m)
Plus bay window to front, double glazed patio to rear, decorative beams to ceiling, matching timber wall features, two radiators, stone inglenook fireplace with beam over and open grate and stone hearth, four wall light points.

DINING ROOM

13' 5" x 10' (4.09m x 3.05m)
Double glazed window to rear, decorative beamed ceiling and wall features, four wall light points, radiator.

BREAKFAST KITCHEN

20' 10" x 9' 10" (6.35m x 3m)
Refitted in 2017 with excellent range of cream fronted Shaker style wall and base units including cupboards and drawers, work surfaces and splashbacks, one and a half bowl stainless steel sink unit and mixer taps, Bosch twin ovens, dishwasher, tall fridge included, peninsular breakfast bar and table, double glazed patio door to rear garden, LED ceiling lighting, radiator.

UTILITY ROOM

10' 5" x 5' (3.18m x 1.52m)
Matching base cupboards and work tops, stainless steel sink unit and mixer taps, plumbing for automatic washing machine and tumble dryer, space for freezer, radiator, double glazed window and two Velux windows. Door to :-

MODERN BATHROOM

7' 1" x 4' 10" (2.16m x 1.47m)
New white suite comprising panelled bath with mixer taps, low flush w.c., vanity wash basin, radiator, double glazed window, Velux window and extractor fan.

FIRST FLOOR

LANDING

Giving access in turn to :-

BEDROOM ONE

16' 2" x 13' (4.93m x 3.96m)
Double glazed window to front, beamed ceiling, three wall light points, two radiators.

SPACIOUS EN-SUITE BATHROOM

13' x 7' 9" (3.96m x 2.36m)
Refitted, comprising free-standing roll edged bath with mixer taps, separate shower cubicle, close coupled w.c., vanity wash hand basin, cupboards under, radiator, heated towel rail, LED ceiling lighting.

BEDROOM TWO

15' x 12' 8" (4.57m x 3.86m)
Double glazed bay window to front, radiator, fitted wardrobes with matching drawer units, three wall light points.

BEDROOM THREE

11' 3" x 11' (3.43m x 3.35m)
Double glazed window to rear, radiator.

BEDROOM FOUR

8' 6" x 7' 9" (2.59m x 2.36m)
Double glazed window to rear, radiator.

BEDROOM FIVE/DRESSING ROOM

11' 10" x 9' 4" (3.61m x 2.84m)
Presently used as a dressing room with private access from a gallery landing to the master bedroom with separate door to the main landing. Fitted with a range of wardrobes and matching dressing table, radiator, LED ceiling lighting, double glazed window to front.

HOUSE BATHROOM

11' 4" x 7' 9" (3.45m x 2.36m)
Refitted with modern white suite comprising panelled bath, wash hand basin, w.c., shower cubicle, heated towel rail, double glazed window.

TO THE OUTSIDE

An electrically operated wrought iron gate and stone pillars gives access to a double width driveway and in turn :-

INTEGRAL DOUBLE GARAGE

17' x 16' 6" (5.18m x 5.03m)
Narrowing to 16' (4.88m) depth
Having electric up and over door, light, power and water laid on. Gas fired central heating boiler.

GARDENS

A good size south facing lawned gardens to rear, together with stone flagged patio areas offer an ideal space for outdoor entertaining. A pond with water fall feature. The front garden is equally enclosed and private with shaped lawns and herbaceous borders.

COUNCIL TAX

Band G (from internet enquiry).

GENERAL

Room measurements in these particulars are only approximations and are taken to the widest point.

None of the services, fittings or equipment referred to in these particulars have been tested and we are therefore unable to comment as to their condition or suitability. Any intending purchasers should satisfy themselves through their



Premium

WHIRLOW HOUSE | THE RIDGE | LINTON | WETHERBY | WEST YORKSHIRE | LS22 4HJ

own enquiries.

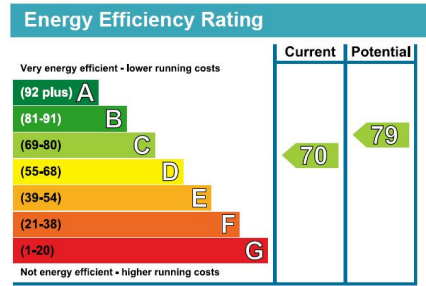
Please note : Only the fixtures and fittings specifically mentioned in these particulars are included in the sale of the property.

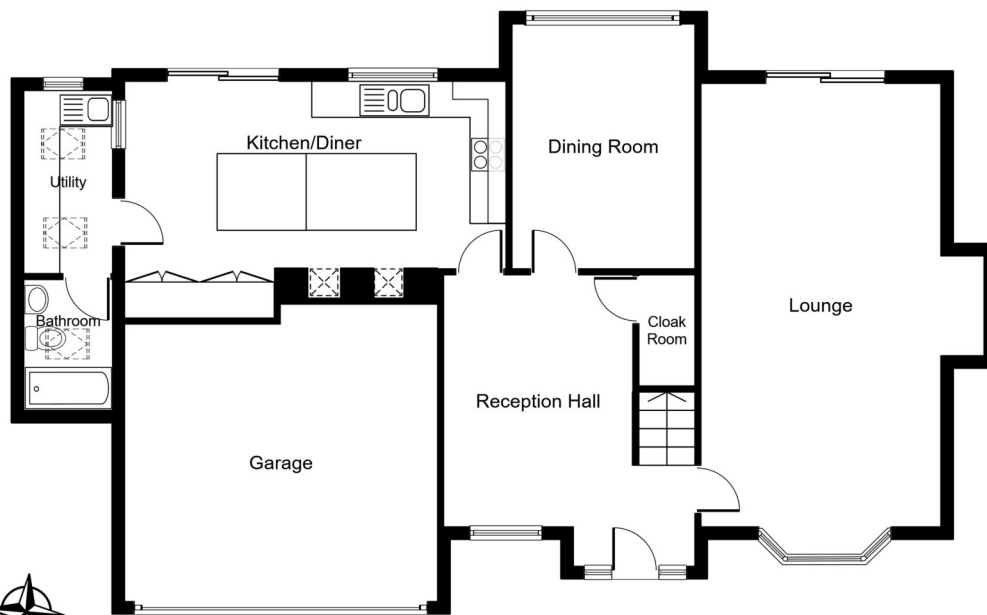
Photographs depict only certain parts of the property. It should not be assumed that the contents/furnishings etc photographed are included in the sale.

VIEWING

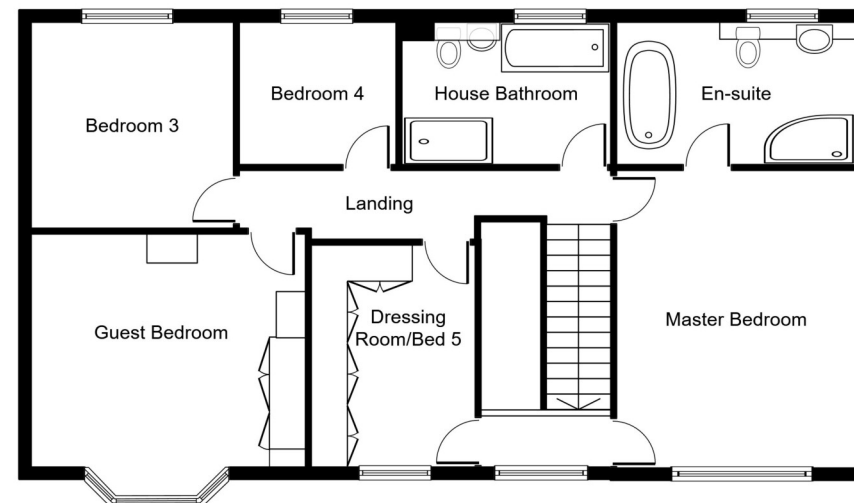
By appointment with the Chartered Surveyors, Renton & Parr at their offices, Market Place, Wetherby. Telephone (01937) 582731)

Draft prepared September 2019





Ground Floor



First Floor



Whirlow House, The Ridge, Linton, Wetherby, LS22 4HJ

Total floor area 223.8 sq. m. (2,409 sq. ft.) Approx (Including garage)

NOT TO SCALE For layout guidance only



Premium

WHIRLOW HOUSE | THE RIDGE | LINTON | WETHERBY | WEST YORKSHIRE | LS22 4HJ



Renton&Parr

47 Market Place, Wetherby, West Yorkshire LS22 6LN

T: 01937 582731 | F: 01937 587578 | E: sales@rentonandparr.co.uk | W: rentonandparr.co.uk



MISREPRESENTATION ACT - Renton & Parr Ltd for themselves and for the Vendors or lessors of this property whose agents they give notice that :- 1. The particulars are set out as a general outline only for the guidance of intending purchasers or lessees, and do not constitute, nor constitute part of, an offer or contract. 2. All descriptions, dimensions, references to condition and necessary permission for use and occupation, and other details are given in good faith and are believed to be correct but any intending purchasers or tenants should not rely on them as statements or representations of fact but must satisfy themselves by inspection or otherwise as to the correctness of each of them. 3. No person in the employment of Renton & Parr Ltd has any authority to make or give any representation or warranty whatever in relation to this property.



Premium

CHARTERED SURVEYORS | ESTATE AGENTS | VALUERS

All-round excellence, all round Wetherby since 1950