



73 Flotilla House, Battersea Reach, London, SW18 1FX
£975 pw



73 Flotilla House, Battersea Reach, London, SW18 1FX

3 Bedroom Apartment | Elite Level Specification | Stunning Open-Plan Reception | River Views |

DESCRIPTION

A stunning 3 bedroom apartment with 61ft private roof terrace.

Flotilla House presents the latest apartments at Battersea Reach overlooking the River Thames, set within a landscaped parkland. The apartments have been designed with a contemporary specification & level of finishing. The living spaces include large areas of glazing to enhance natural daylight.

Battersea Reach has become a thriving riverside community, offering contemporary designed apartments, relaxing open spaces and fast access to businesses, shops, entertainment and international travel.

Battersea Reach fulfils the retail and leisure requirements of a sophisticated modern lifestyle, with easy access to a wide neighbouring network of bars, restaurants & world-class shopping in the immediate area.

Extensive gardens and new river walkways make the most of this appealing location, as do the cafés and restaurants that provide the perfect venues in which to relax and socialise by the water's edge.

Battersea

KEY FEATURES

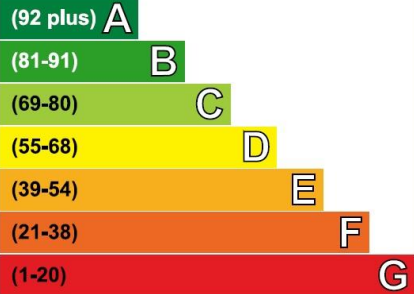
- 3 Bedroom Apartment
- Elite Level Specification
- Stunning Open-Plan Reception





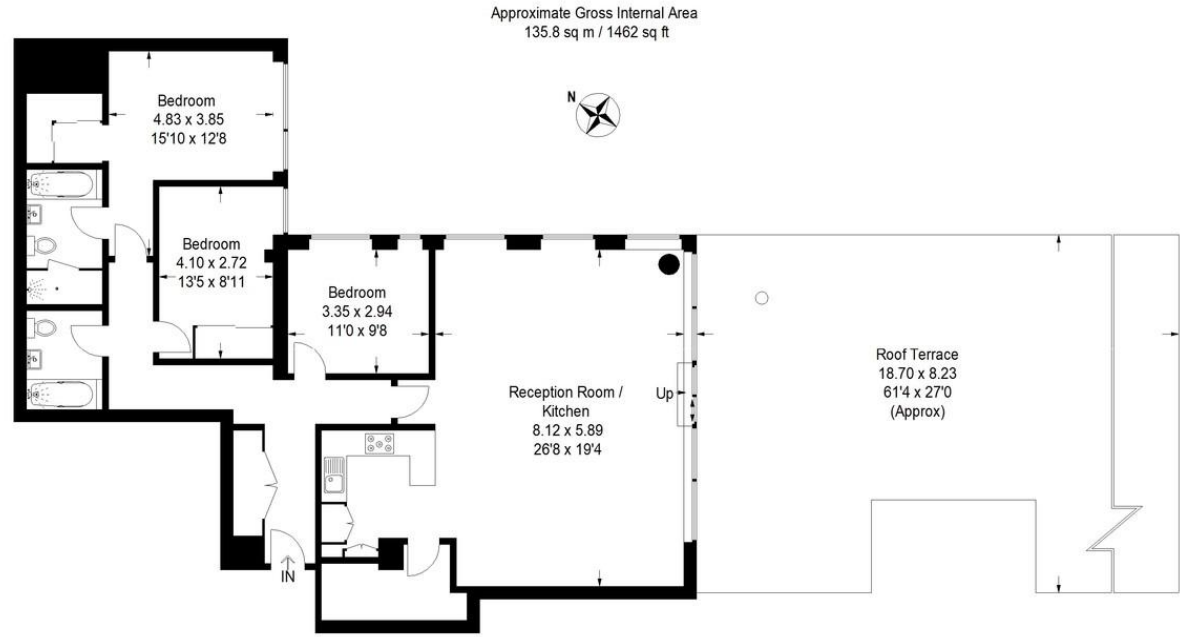
Energy Efficiency Rating

Very energy efficient - lower running costs



Not energy efficient - higher running costs

Current	Potential
85	85



Ninth Floor

Illustration for identification purposes only, measurements are approximate, not to scale.
FloorplansUsketch.com © 2019 (ID 558992)

ADDITIONAL INFORMATION

Tenure: %tenure%

Local Authority: Wandsworth Borough Council