



4 BRYANSTON SQUARE,  
MARYLEBONE, W1H  
**£1,100 Per week Fees Apply**

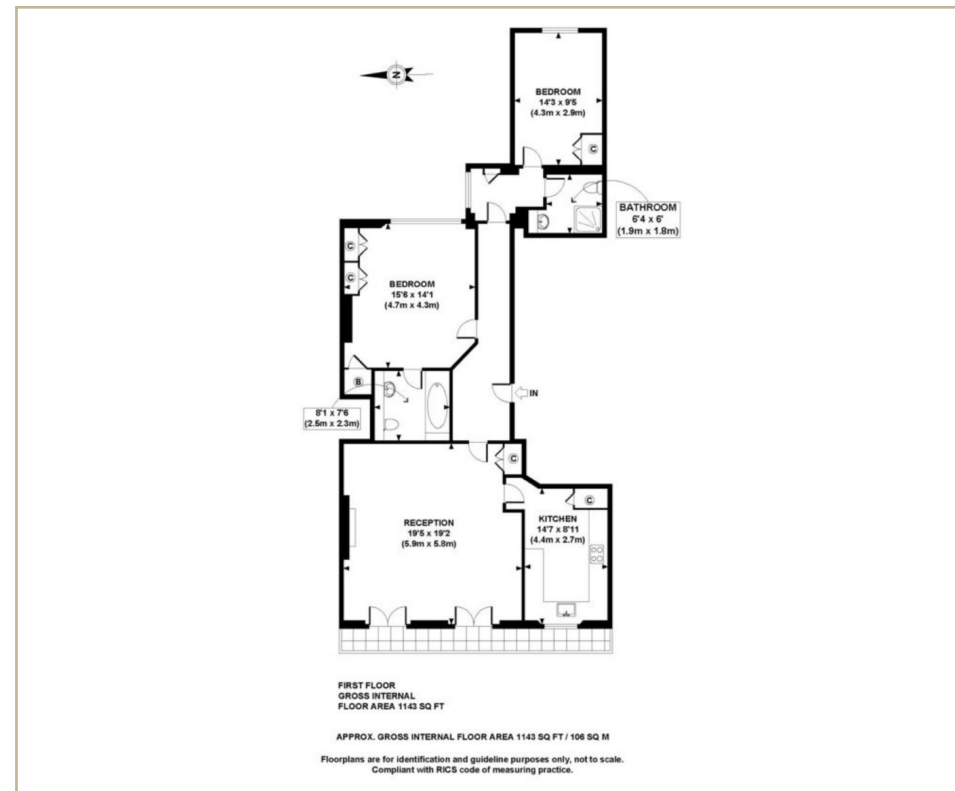
T. +44 (0) 20 7935 0011  
E. [enquire@napierwatt.co.uk](mailto:enquire@napierwatt.co.uk)  
[WWW.NAPIERWATT.CO.UK](http://WWW.NAPIERWATT.CO.UK)

**NAPIER WATT**  
PROPERTY CONSULTANTS

## Description

Highly sought after property on the 1st floor of the exclusive Bryanston Square, featuring high ceilings and contemporary decor. The fully fitted kitchen is presented with top brand appliances, and two bedrooms, two bathrooms (one en-suite) and a generously sized reception room mean living space is abundant. High

west-facing windows with a view of the square ensure plentiful brightness, and access to the residents-only square is provided



Additional costs will apply for; referencing (£36 per person & guarantor); administration (£240); renewal/extensions (£120); check-out inventory & cleaning (variable); special requests (variable). Security Deposits also apply to all tenancies.

T. +44 (0) 20 7935 0011  
E. [enquire@napierwatt.co.uk](mailto:enquire@napierwatt.co.uk)  
[WWW.NAPIERWATT.CO.UK](http://WWW.NAPIERWATT.CO.UK)

**NAPIER WATT**  
PROPERTY CONSULTANTS