



HASELBURY HOUSE, 81 GEORGE STREET
MARYLEBONE, W1U
£1,450 Per week Leasehold Fees Apply

T. +44 (0) 20 7935 0011
E. enquire@napierwatt.co.uk
WWW.NAPIERWATT.CO.UK

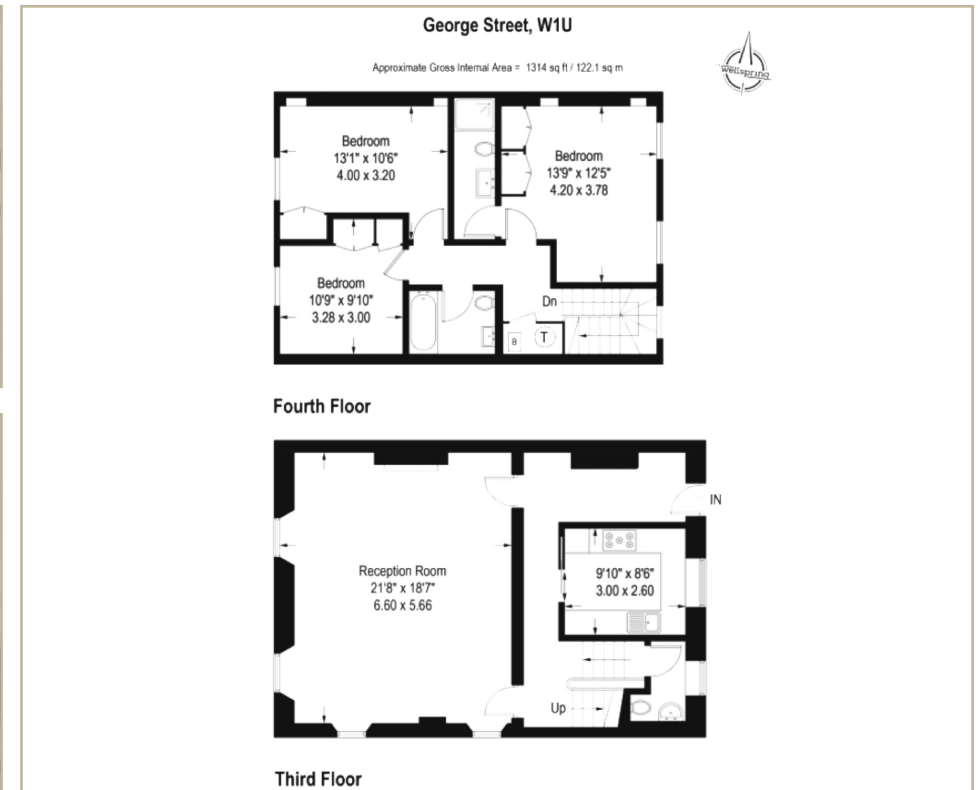
NAPIER WATT
PROPERTY CONSULTANTS

Description

A well designed three bedroom, two bathroom duplex apartment set within the prestigious Haselbury House development. The property is located on the corner of Gloucester Place and Portman Close within easy access to Portman Square, Oxford Street and the West End.

Haselbury House offers uniformed twenty four hour portage, CCTV, Air-Conditioning, lifts, Crestron lighting and underground parking available by separate negotiation.

The apartment comprises; entrance hall, reception room, luxury fitted kitchen, master bedroom with ensuite bathroom, two further bedrooms, shower room and guest



Additional costs will apply for; referencing (£36 per person & guarantor); administration (£240); renewal/extensions (£120); check-out inventory & cleaning (variable); special requests (variable). Security Deposits also apply to all tenancies.

T. +44 (0) 20 7935 0011
E. enquire@napierwatt.co.uk
WWW.NAPIERWATT.CO.UK

NAPIER WATT
PROPERTY CONSULTANTS