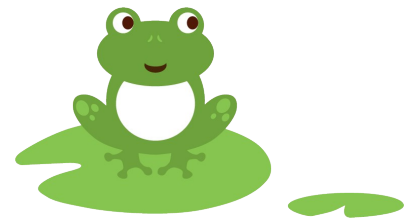




ESTATES

MANAGEMENT, SALES & LETTINGS



12 Moor End Road, Crookesmoor, Sheffield, S10 1ND

ROOM TO RENT!!! This superb student property is located in Crookesmoor with its many shops and services. This is an extremely high quality property finished to an exceptionally good standard. The University of Sheffield is within a 10 minutes walk. There are two high quality bathrooms located on the first and second floor, both with powerful showers. The decoration is modern and contemporary. The property benefits from a large open plan kitchen/living area. The living area has two large three seater sofas, a 40" television, coffee table and prints and mirrors on the walls. The large new kitchen is fitted with a dishwasher, microwave, fridge and fridge/freezer. There is a large utility basement, which houses the

- 6 bed property
- Dishwasher
- Large bedrooms
- TV included
- On street parking
- Garden to the rear
- New kitchen
- Dryer
- Fully furnished
- All inclusive available on request

£92 Per Week

Available: 1st July 2019

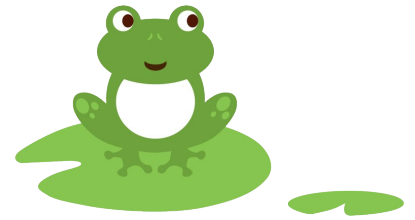


T: 0114 272 7787 | E: info@bps-estates.co.uk | www.bps-estates.co.uk

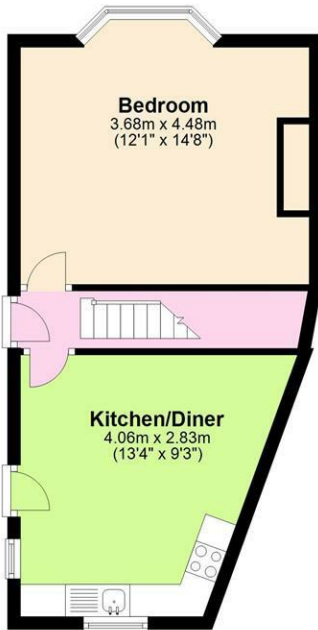


ESTATES

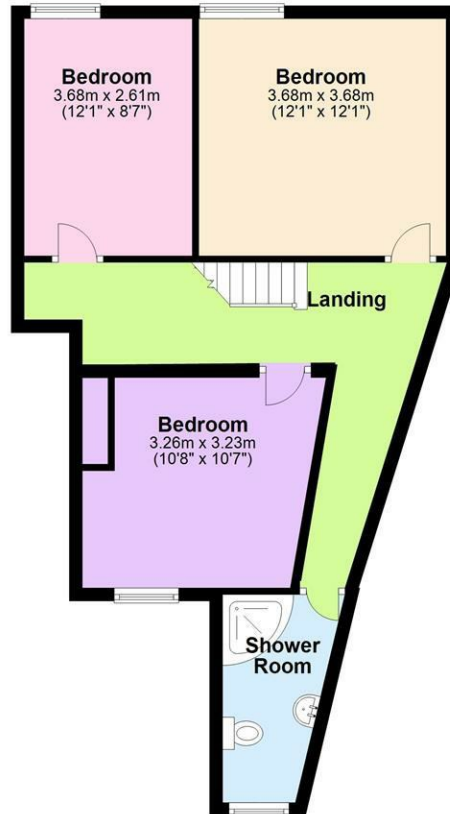
MANAGEMENT, SALES & LETTINGS



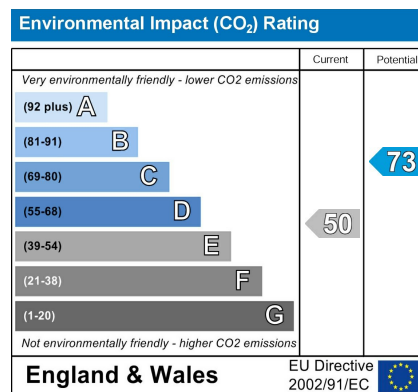
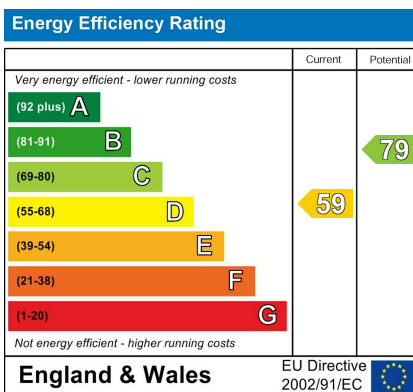
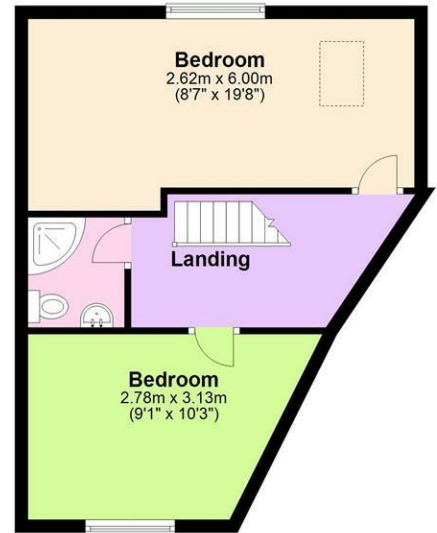
Ground Floor



First Floor



Second Floor



BPS Estates (Part of Broomhill Property Shop)
319 Glossop Road, Sheffield, S10 2HP
T: 0114 272 7787 | E: info@bps-estates.co.uk
W: www.bps-estates.co.uk