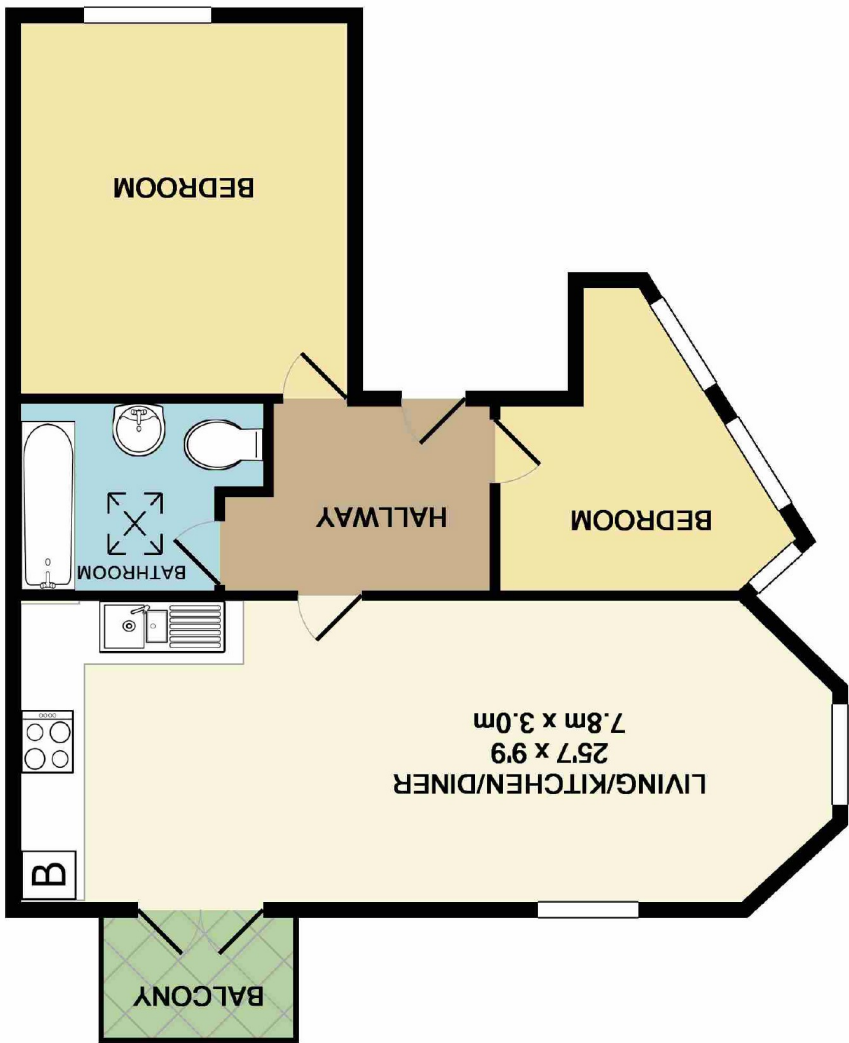


These particulars are believed to be accurate but they are not guaranteed and do not form a contract. Neither Jordan Fishwick nor the vendor or lessor accept any responsibility in respect of these particulars, which are not intended to be statements or representations of fact and any intending purchaser or lessee must satisfy himself by inspection or otherwise as to the correctness of each of the statements contained in these particulars. Any floorplans on this brochure are for illustrative purposes only and are not necessarily to scale.

TOTAL APPROX. FLOOR AREA 521 SQ.FT. (48.4 SQ.M.)
Measurements are approximate. Not to scale. Illustrative purposes only
Made with Metropix ©2019





21 Cranbourne Road Chorlton
Cum Hardy M21 8AP
£210,000



The Property

SERIOUSLY STYLISH TOP FLOOR APARTMENT WITH BALCONY
Situating in the heart of Chorlton between Beech Road and the Village centre, this Victorian conversion is the perfect property for a First Time Buyer.
The accommodation comprises; Hallway, Open plan Living/ Dining Kitchen space with french doors opening to a little balcony. You then have a generous double bedroom with a further study or small bedroom with feature full length window. Finally, you have a modern bathroom with vaulted ceiling. This apartment is one of only four in the building and has use of a parking area to the rear.

- Modern Top Floor Apartment
- Balcony
- Shared Parking Area
- Vaulted Ceilings
- Stylish Design Features
- Modern Kitchen & Bathroom
- Share of Freehold

COMMUNAL HALLWAY
HALLWAY
LIVING/KITCHEN/DINER 25'1 (Into Bay) x 9'1
BEDROOM ONE 11'9 x 10'4
STUDY/BEDROOM TWO Max 9'11 x Max 9'11
BATHROOM 7'5 x 6'0

Postcode - M21 8AP
EPC Rating - E
Local Authority - Manchester City Council
Council Tax - Band E

