



## 69 Brantingham Road, Whalley Range, Manchester

£1,800 PCM

Prepare to be amazed at this fantastic home to rent in South Manchester. This modern 3 storey house will bring you 4 bedrooms, driveway parking, a balcony and gorgeous interiors. What's more, it's available right now and even comes part-furnished! Keep reading...

Situated in the well regarded Whalley Range area of south Manchester, just 10-15 minutes from the city centre, lies this stunning end terrace. Perfect for modern day families, it boasts garage storage, driveway parking, and a close positioning to an array of schools.

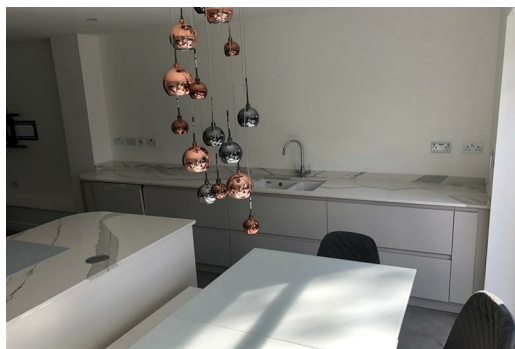
The outside of this 3-storey end-terrace instantly impresses, particularly with the balcony. Step inside and the style continues. On the ground floor, past the built-in garage is the kitchen of dreams. This large space is super sleek given its bright white ambience and marble top units. You'll find lots of storage space that has been well designed to the space, and that central island is just next level! Take a step outside those large patio doors, and you'll see the garden is nice and private, features a stunning patio, and is excellent in size.

The first floor reception room is excellently decorated, and boasts stylish furniture as seen on the photos - inclusive with the rent. The front reception room leads to a private balcony so you can dine al-fresco whenever you feel like it!

Bedroom wise, you'll be in for a treat with the plush grey carpeting. Including a selection of wardrobes, and chest of drawers, these rooms are good-sized and are perfect for any members of a family. There's plenty of choice when it







Energy Efficiency Rating		Environmental Impact (CO <sub>2</sub> ) Rating	
Rating	Score	Rating	Score
A	92-100	A	1-10
B	81-91	B	11-20
C	69-80	C	21-30
D	58-68	D	31-40
E	49-57	E	41-50
F	39-48	F	51-60
G	34-38	G	61-70

England & Wales