



## Church Road

Paddock Wood TN12 6HB

Guide Price £325,000



COUNTRY HOMES



## Paddock Wood TN12 6HB

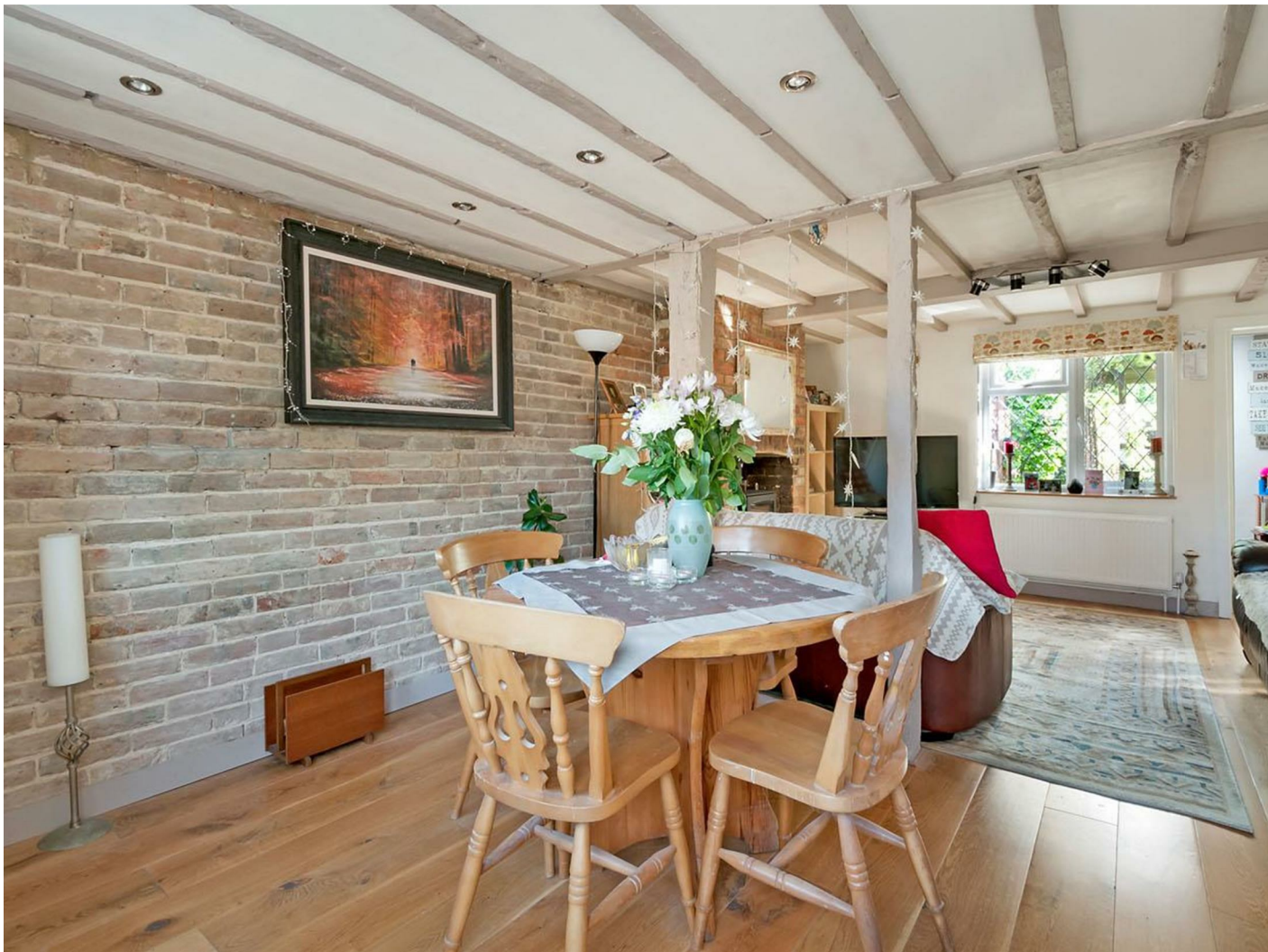
### STUNNING PERIOD COTTAGE.

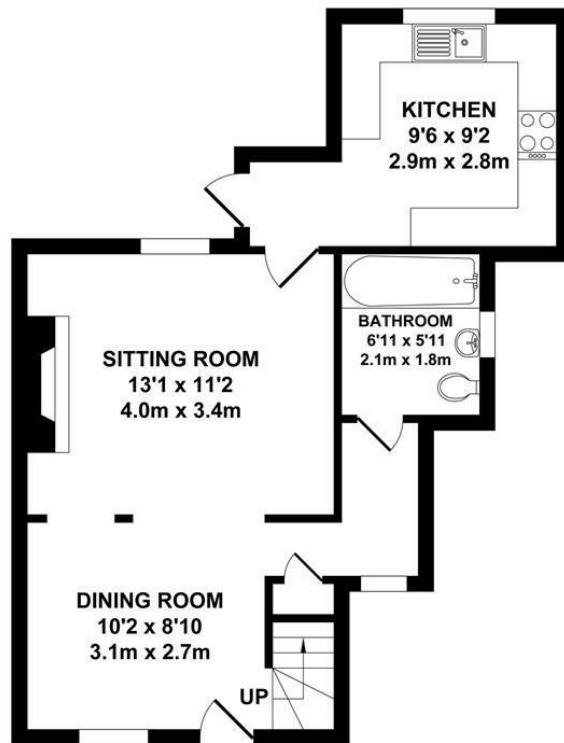
Situated on this convenient road only a short walk from Paddock Wood station and town centre which offers a variety of local shops and larger supermarkets.

Having undergone a makeover this property combines character and period features with modern design aspects essential for everyday living. The property has a good flow and a real feel of charm you'd expect from a period property. As you can see from the floorplan the property is laid out over 3 floors which offers versatility. It has three good size separate bedrooms, double reception room and a well appointed kitchen and bathroom. To the rear there is a great size garden for the type of property and to the front there is parking for two cars.

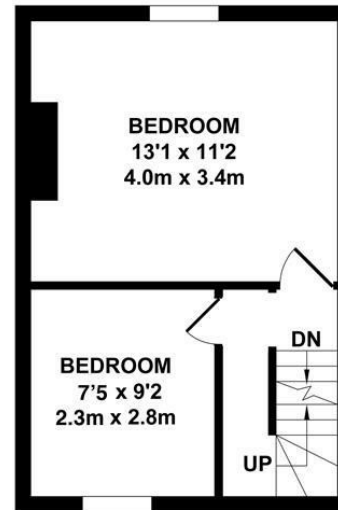
Viewing highly recommended.

- Stunning period cottage
- End of terrace
- Three bedrooms
- Double reception
- Modern fitted kitchen
- Bathroom
- Good size garden
- Parking
- Close to shops and station
- Chain free

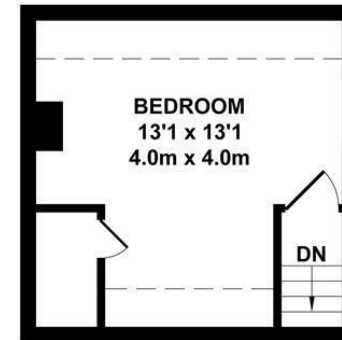




GROUND FLOOR  
APPROX. FLOOR AREA  
440 SQ. FT.  
(40.84 SQ. M)



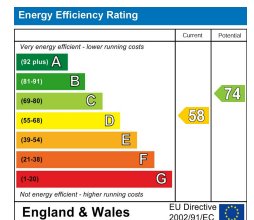
FIRST FLOOR  
APPROX. FLOOR AREA  
267 SQ. FT.  
(24.80 SQ. M)



SECOND FLOOR  
APPROX. FLOOR AREA  
172 SQ. FT.  
(16.00 SQ. M)

**TOTAL APPROX. FLOOR AREA 879 SQ.FT. (81.64 SQ.M.)**

Whilst every attempt has been made to ensure the accuracy of the floor plan contained here, measurements of doors, windows, rooms and any other items are approximate and no responsibility is taken for any error, omission or misstatement. This plan is for illustrative purposes only and should be used as such by any prospective purchaser. The services, systems and appliances shown have not been tested and no guarantee as to their operability or efficiency can be given.  
Zome Media ©2018













## Location Map



**TO VIEW CONTACT:**

**01892 838 080**

**countrystates@khp.me**

**www.khp.me**

