



10 Sherwood Place, Dronfield Woodhouse, Dronfield, S18 8PB

Saxton Mee

10 Sherwood Place

Dronfield Woodhouse

Offers Around

£120,000

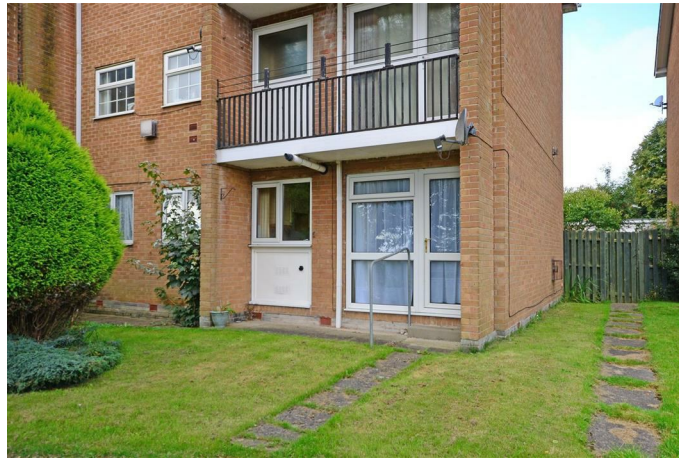
Nicely proportioned and easily maintained two bedroom ground floor flat.

Particularly well situated this two bedroom flat stands within easy walking distance of the nearby shopping facilities on Pentland Road along with the doctors, pharmacist, park and a regular bus service. The surprisingly spacious accommodation offers a gas fired central heating system, UPVC double glazing and briefly comprises: living/dining room opening through to the fitted kitchen, inner hallway with useful deep storage cupboards, two bedrooms and excellent wet room. Parking and garage.



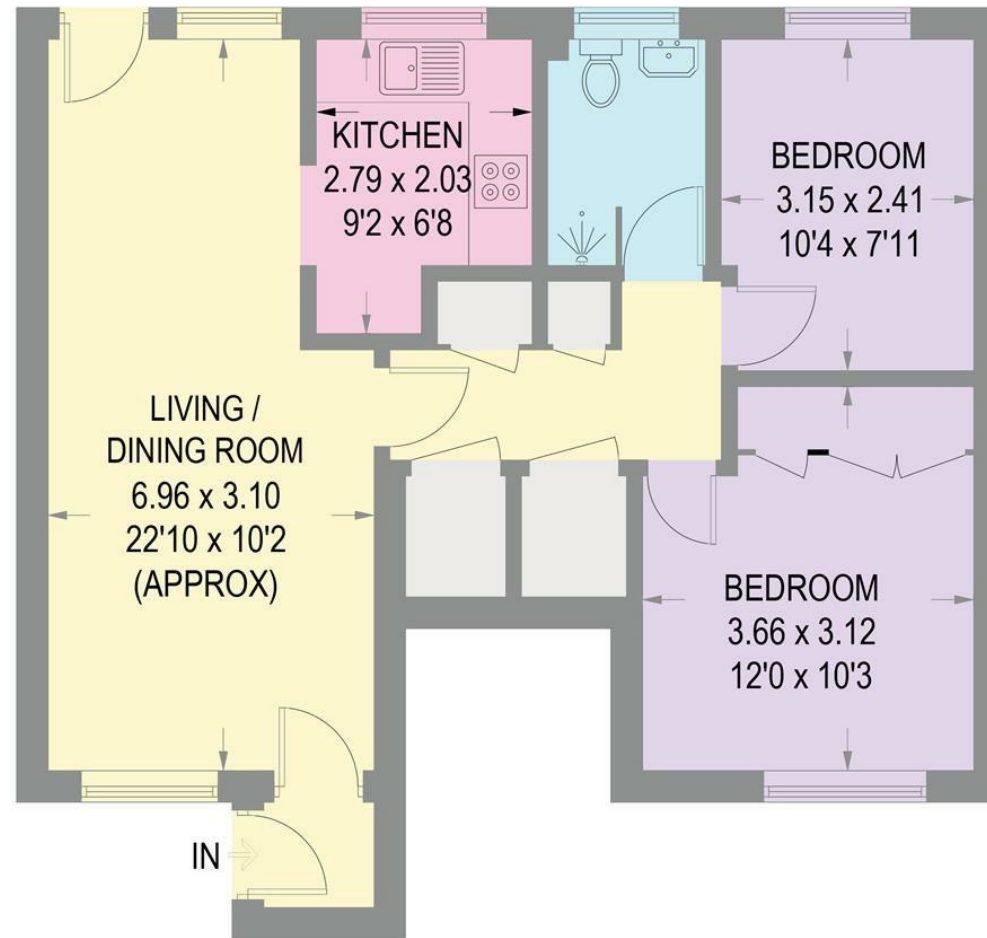
- Two Bedroom Ground Floor Flat
- Nicely Proportioned
- Convenient Location
- Gas Central Heating & UPVC Double Glazing
- Parking & Garage
- No Chain Involved
- Energy Rating D
- Viewing: Dronfield Office





10 SHERWOOD PLACE

APPROXIMATE GROSS INTERNAL AREA = 58.6 SQ M / 631 SQ FT



GROUND FLOOR

Illustration for identification purposes only, measurements are approximate, not to scale.

While we endeavour to make our sales particulars fair, accurate and reliable, they are only a general guide to the property and, accordingly, if there is any point, which is of particular importance to you, please contact the relevant office. The Agents have not tested any apparatus, equipment, fittings or services and so cannot verify they are in working order. The buyer is advised to obtain verification. Please note all the measurement details are approximate and should not be relied upon as exact. All plans, floor plans and maps are for guidance purposes only and are not to scale. Under no circumstances should they be relied upon as exact or for use in planning carpets and other such fixtures, fittings or furnishings. YOUR HOME IS AT RISK IF YOU DO NOT KEEP UP REPAYMENTS ON A MORTGAGE OR OTHER LOAN SECURED ON IT. 'A Life Assurance policy may be requested.' 'Written Quotations of credit terms available on request.'

Banner Cross
T: 0114 268 3241
E: bannercross@saxtonmee.co.uk
www.saxtonmee.co.uk

Dronfield
T: 01246 290992
E: dronfield@saxtonmee.co.uk

Hathersage
T: 01433 650009
E: hathersage@saxtonmee.co.uk

Bakewell
T: 01629 815307
E: bakewell@saxtonmee.co.uk

Matlock
T: 01629 828250
E: matlock@saxtonmee.co.uk

