



Ravensmede Way, London, W4 1TF

£459,950

**WHITMAN & CO.**

SALES · LETTINGS · COMMERCIAL



- Small private development
- Off street parking
- Close to numerous facilities
- Well presented first floor flat
- Dual aspect reception room
- No chain

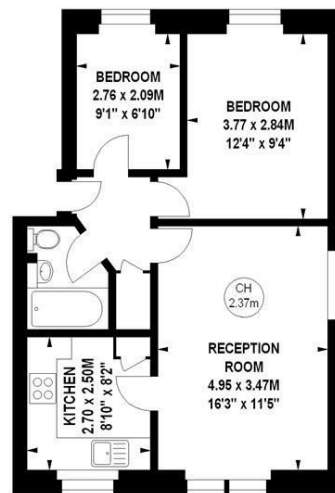
Tenure - Leasehold with Share in the Freehold  
 Lease length - 900+ years  
 Service Charge - £2072 pa  
 Local authority - Hounslow  
 Council Tax - Band D

## THE PROPERTY

A well presented, centrally located first floor apartment set within this small private development close to numerous amenities. The flat comprises; dual aspect reception room, fitted kitchen, two bedrooms, bathroom, unallocated off street parking, 900+ year lease and share in the freehold. Ravensmede Way runs north of Chiswick High Road and is within a short walk of shops, cafes and restaurants. Transport links include Stamford Brook Station, local bus routes and the A4/M4 for routes in and out of London. No chain.

### Ravensmede Way, W4

Approximate gross internal area  
**51.00 sq m / 549 sq ft**



### First Floor

The floor plan is not to scale and measurements and areas shown are approximate and therefore should be used for illustrative purposes only. The plan has been prepared in accordance with the RICS code of Measuring Practice and whilst we have confidence in the information produced, it must not be relied on. If there is any aspect of particular importance, you should carry out or commission your own inspection of the property.  
 Copyright of FeaturePRO.

## SITUATION



5-7 Turnham Green Terrace, Chiswick, London, W4 1RG

Tel 020 8747 8300

E-mail [sales@whitmanandco.com](mailto:sales@whitmanandco.com)

Website [www.whitmanandco.com](http://www.whitmanandco.com)