

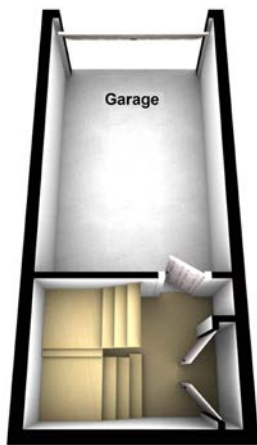


- Central Waterside Maisonette
- Immaculate Condition
- Three Bedrooms; ALL With Built In Storage
- Open Plan Living
- Modern Kitchen & Bathroom
- En-Suite Shower Room
- Integral Garage & Off Road Parking
- Roof Terrace
- £1,156.80 Annual Service Charge
- £250 Annual Ground Rent

Maitlands are delighted to offer to the market this modern maisonette which is situated in an enviable, central waterside position. The property is immaculately presented throughout with the accommodation comprising; spacious open plan lounge/kitchen/diner, modern family bathroom and three bedrooms; two doubles and a single, all of which have built in storage and the master benefits from an en-suite shower room. The property also boasts a roof terrace, ample storage cupboards, an integral garage & off-road parking space. The water views from this property can be enjoyed from the living area, both double bedrooms and the roof terrace. This really is a must view property; call us now to avoid disappointment.



Lowest Ground Floor



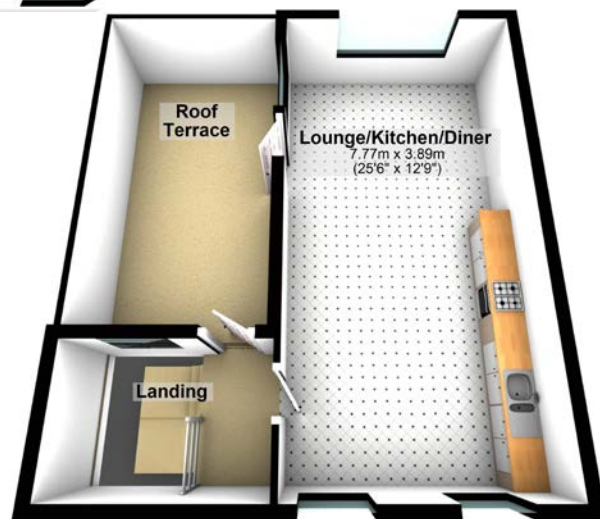
Ground Floor



Lower Ground Floor



First Floor



Directions

From our office on Millbay Road, take a left and follow the road onto West Hoe Road. The property is located on the right hand side.

EPC Rating: B **Tenure:** Leasehold

Available for viewing 7 days a week.

Contact us today.

Maitlands Plymouth

t: 01752 661000

e: plymouth@maitlands.biz

3 Plymouth Road, Plympton, Devon, PL7 4JP

www.maitlands.biz

The vendor has advised us that the information contained within these particulars is correct to the best of the vendors knowledge. With regard to appliances and electrical installations, we have not tested any items detailed in these particulars and any prospective purchaser should satisfy themselves with regard to their condition. All fixtures and fittings as mentioned in our sales particulars are included; all others are expressly excluded. All measurements are approximate. All floor plans of properties are not drawn to scale and are for information only.



Want to know more?

We recognise that buying a property is a big commitment and therefore recommend that you visit the following websites for further information about the property and local area.

www.environment-agency.gov.uk

www.landregistry.gov.uk

www.plymouth.gov.uk

