



A well-presented, three storey, Victorian terrace on Deuchar Street, Jesmond. Deuchar Street, just off Osborne Avenue is centrally located close to the refurbished Punchbowl, Jesmond Dene and is also well placed close to excellent local schooling and to enjoy access to the cafés, shops and restaurants of Jesmond as well Newcastle City Centre itself.

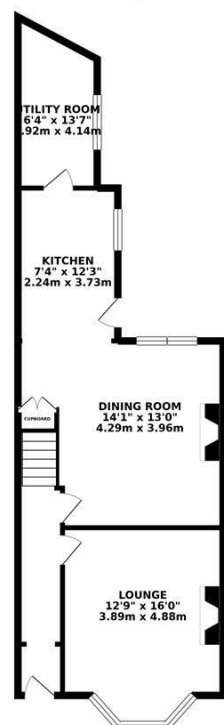
Boasting over 1,500 sq ft of internal living accommodation the property briefly comprises: entrance hall with staircase to first floor: lounge with walk-in bay and feature fireplace; an open plan kitchen and dining room, again with feature fireplace and oak flooring and a useful utility room to the ground floor. To the first floor a contemporary family bathroom and two double bedrooms, the master an impressive room occupying the full width of the house. To the second floor, two further double bedrooms, both with Velux rooflights and shower room. Externally, a pleasant town garden to the front and an enclosed courtyard to the rear with artificial lawn, walled boundaries and gated access out to the rear service lane. Well-presented throughout, with gas 'Combi' central heating and double glazing, an early viewing is an absolute must!

Victorian Terrace | 1,507 sq ft (134m²) | Three Storeys | Four Double Bedrooms | Lounge | Open Plan Kitchen & Dining Room | Utility Room | Re-Fitted Family Bathroom & Shower Room | Courtyard | Well Presented | No Onward Chain | GCH & DG | EPC Rating: D

Offers Over £300,000



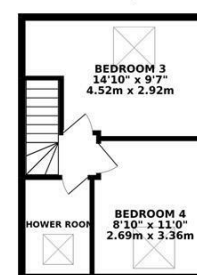
GROUND FLOOR 644.67 sq. ft.
(59.89 sq. m.)



1ST FLOOR 555.38 sq. ft.
(51.60 sq. m.)



2ND FLOOR 306.51 sq. ft.
(28.48 sq. m.)



TOTAL FLOOR AREA : 1506.57 sq. ft. (139.96 sq. m.) approx.
Whilst every attempt has been made to ensure the accuracy of the floorplan contained here, measurements of doors, windows, rooms and any other items are approximate and no responsibility is taken for any error, omission or mis-statement. This plan is for illustrative purposes only and should be used as such by any prospective purchaser. The services, systems and appliances shown have not been tested and no guarantee is given to their operability or efficiency can be given.
Made with Metropix ©2019



IMPORTANT NOTE: These particulars and the descriptions and measurements herein do not constitute representation and whilst every effort has been made to ensure accuracy, this cannot be guaranteed.

