



50 Wickstead Avenue, Luton, LU4 9DP
Offers In The Region Of £280,000

We are delighted to offer this superb and delightful Three Bedroom Semi Detached House with Separate Studio great Investment Opportunity (rental income over £1600 PCM, 6.5% yield . or Family Home.

Located on a peaceful area close to local amenities and shops, less than 10 minutes walk to Leagrave train station. Accommodation comprises of entrance hall, cloakroom, lounge, dining room, kitchen, two double and one single bedrooms and a shower room.

Benefits include double glazing (w/s), gas to radiator heating and Approx 100ft back garden. To the front you have parking for several cars.

The property is ideally located and offers easy access to the M1 Motorway, Leagrave Train Station as well as local schools, shops and amenities.

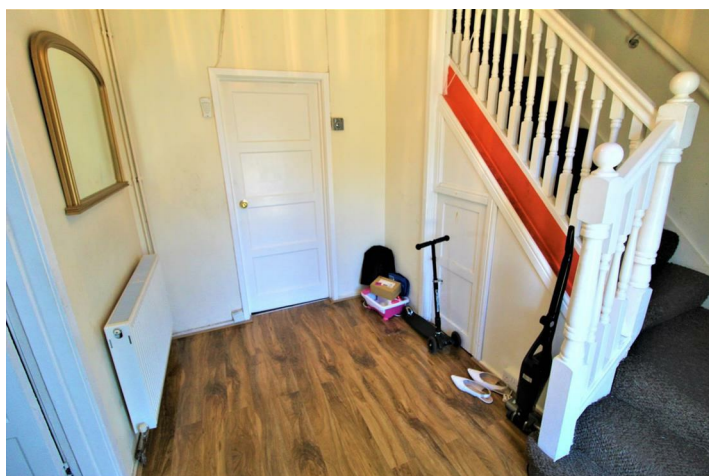
Front Aspect



Bedroom One



Hallway



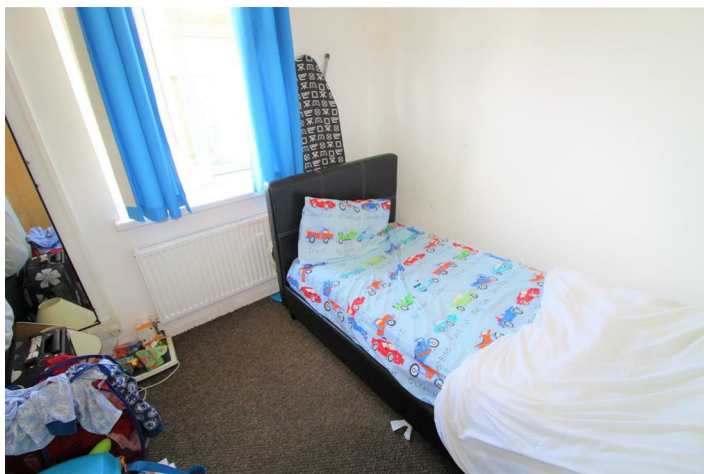
Bedroom Two



Rear Aspect



Bedroom Three



Lounge/ Diner



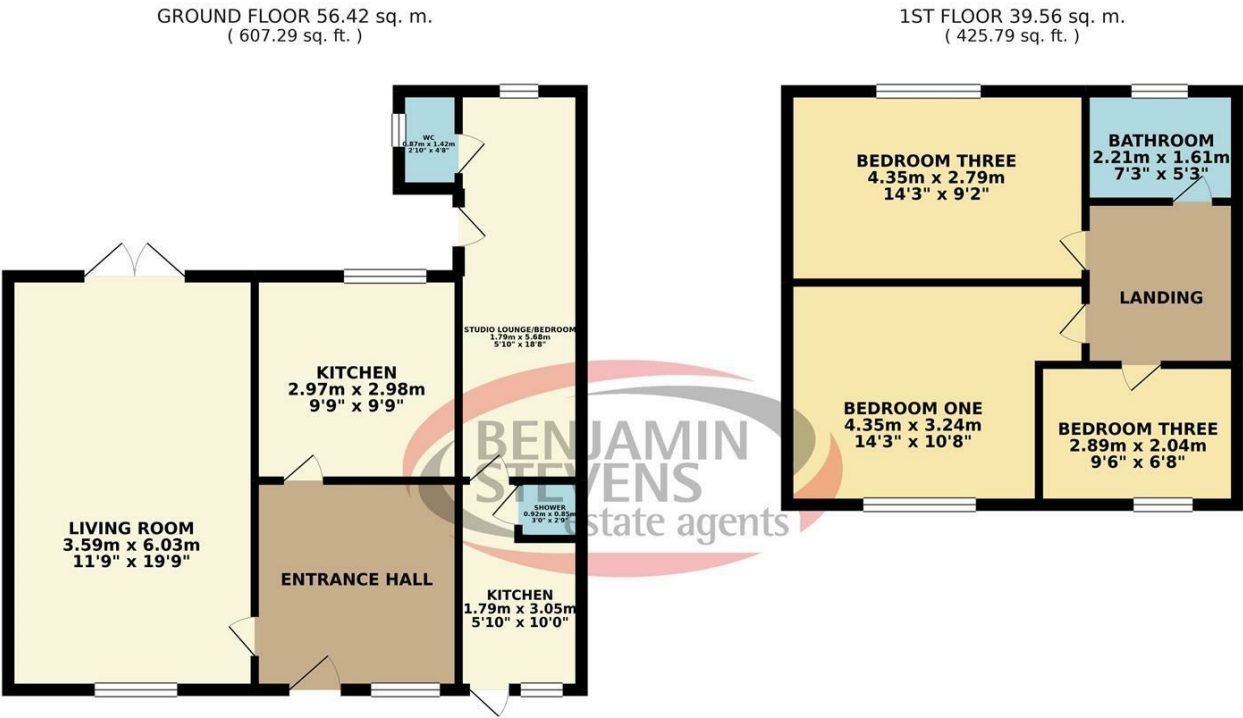
Family Bathroom



Garden



Floor Plan



TOTAL FLOOR AREA : 95.98 sq. m. (1033.07 sq. ft.) approx.

Whilst every attempt has been made to ensure the accuracy of the floorplan contained here, measurements of doors, windows, rooms and any other items are approximate and no responsibility is taken for any error, omission or mis-statement. This plan is for illustrative purposes only and should be used as such by any prospective purchaser. The services, systems and appliances shown have not been tested and no guarantee as to their operability or efficiency can be given.

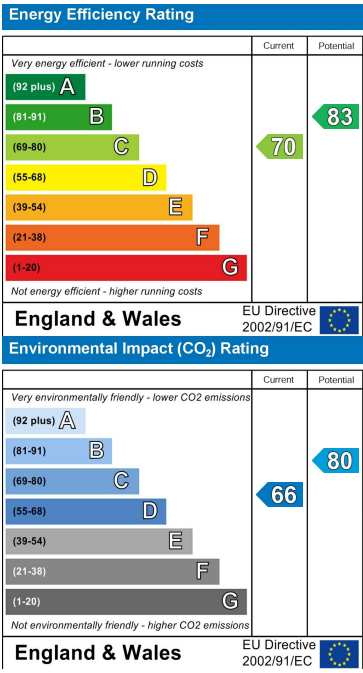
Made with Metropix ©2019

3 bedroom+studio

Area Map



Energy Efficiency Graph



These particulars, whilst believed to be accurate are set out as a general outline only for guidance and do not constitute any part of an offer or contract. Intending purchasers should not rely on them as statements of representation of fact, but must satisfy themselves by inspection or otherwise as to their accuracy. No person in this firms employment has the authority to make or give any representation or warranty in respect of the property.

