

Chiswick Green Studios, London, W4 5BW

Guide Price £2,250,000

WHITMAN & CO.

SALES · LETTINGS · COMMERCIAL

- Stunning penthouse
- Views across west London
- Private gym
- Floor to ceiling windows
- Secure underground parking
- Onsite porter

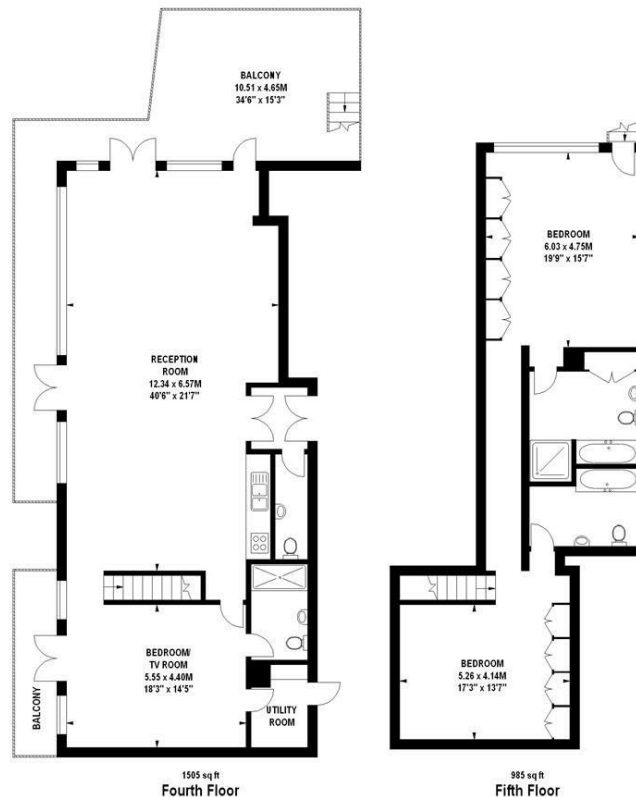
Tenure - Leasehold (900+ years)
Service charge - £4,000 pa approx.
Local authority - Hounslow
Council tax - Band H

THE PROPERTY

A spectacular penthouse offering 2490 sq ft of contemporary lateral space, vaulted ceilings and large wrap-around roof terrace with commanding views across West London. 40'x21' Dual aspect reception room with floor to ceiling windows, fully fitted bespoke kitchen, utility room, three double bedrooms with three luxury ensuites, cloakroom, feature wrap-around terrace with large South facing deck, secure underground parking, private gym, onsite porters. Ideally situated within close proximity of Chiswick Park and Turnham Green Tube Stations and the extensive shops, bars and restaurants on Chiswick High Road. No chain.

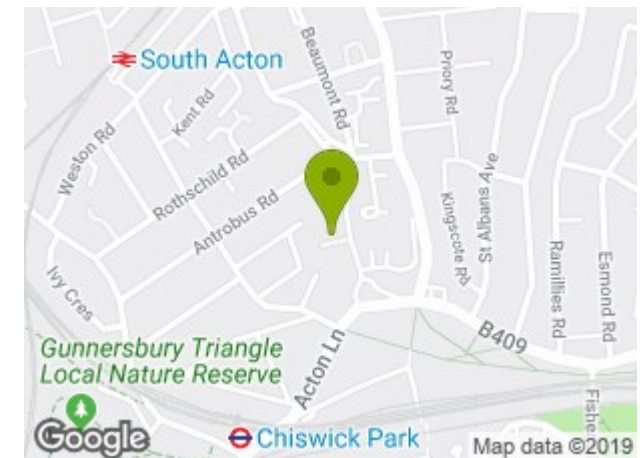
Chiswick Green Studios, W4

Approximate gross internal area
231.32 sq m / 2490 sq ft



The floor plan is not to scale and measurements and areas shown are approximate and therefore should be used for illustrative purposes only. The plan has been prepared in accordance with the RICS code of Measuring Practice and whilst we have confidence in the information produced, it must not be relied on. If there is any aspect of particular importance, you should carry out or commission your own inspection of the property. Copyright of FeaturePRO.

SITUATION



5-7 Turnham Green Terrace, Chiswick, London, W4 1RG

Tel 020 8747 8800

E-mail sales@whitmanandco.com

Website www.whitmanandco.com