



FINE & COUNTRY
Kingswood

3 Greenways
Tadworth, Surrey KT20 7QE

Property at a glance

- Spacious Five Bedroom Family Home
- Three Bath/Shower Rooms
- Double Aspect Sitting Room
- Dining Room
- Open-Plan Kitchen/Breakfast/Family Room
- Utility Room & Cloakroom
- Landing With Seating Area
- Cul De Sac Location
- Large Driveway & Single Garage
- Level Rear Garden

Setting

The property is located close to Walton on the Hill village which provides a range of local shops, including a Co-op supermarket, post office, butchers, pharmacy, cycle shop and a selection of cafes and restaurants. Tadworth village and railway station are within a short drive and are also walk-able.

The wide open spaces of nearby Walton Heath are an Area of Outstanding Natural Beauty and has a championship golf course with one of England's most exclusive golf clubs.

Locally there is a good choice of state and independent schools including Chinthurst, Aberdour and Walton on the Hill primary.

£1,100,000 Freehold

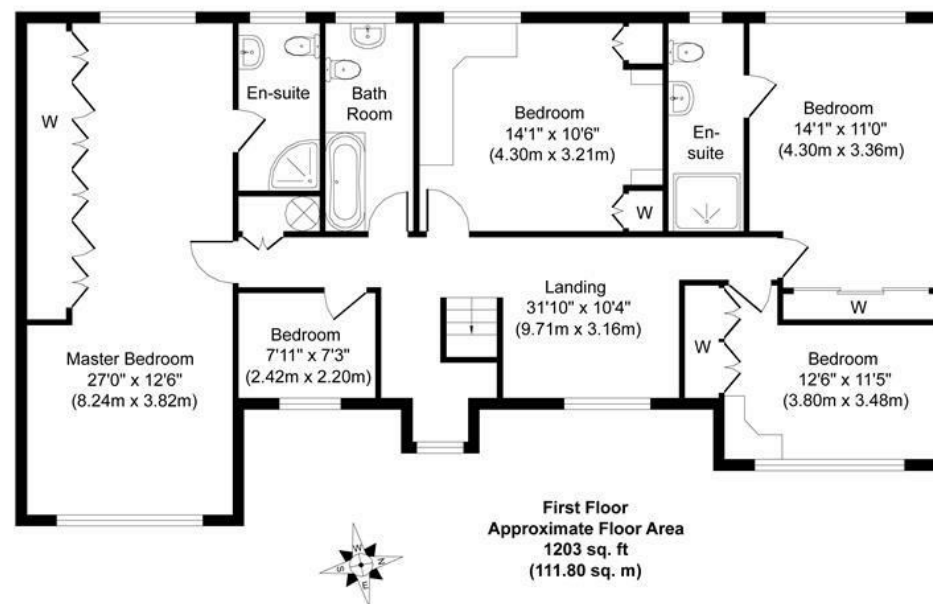
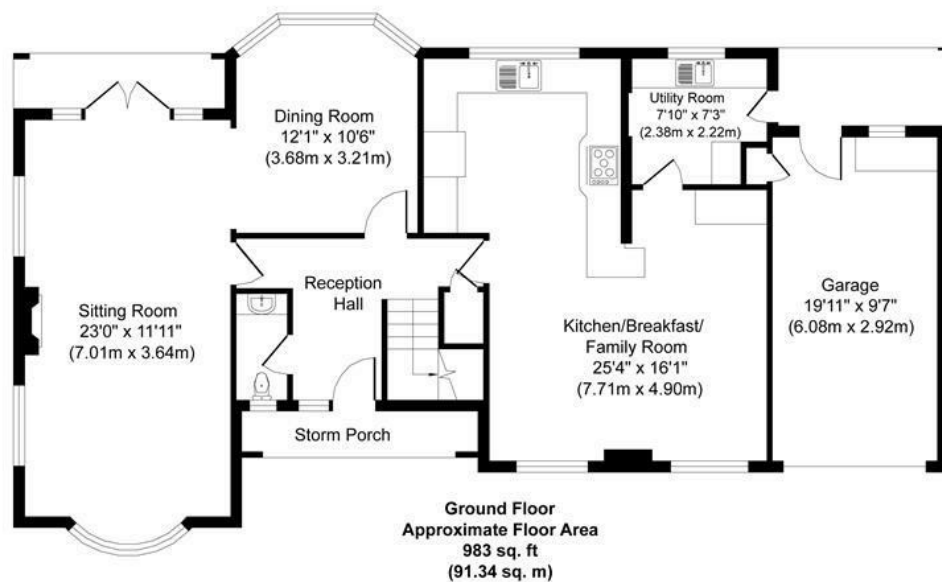
3 Greenways

This spacious five bedroom family home is situated within a popular cul-de-sac close to Walton Village. The property is also well placed for keen golfers with The Championship course at Walton Heath Golf Club a short walk away. The accommodation is ideal for a large family with four of the bedrooms being double and two bedrooms coming with en-suite facilities.

The ground floor works well for entertaining. The double aspect sitting room comes with patio doors opening onto the rear garden; the sitting room is open-plan to the dining room and there is a large open-plan kitchen/family room measuring 25' x 16'. Also to the ground floor are a cloakroom and a utility room with access to the rear garden, ideal for dog owners as there is also side access.

To the first floor is a large landing with a sitting area; a double aspect master bedroom with a range of fitted wardrobes and an en-suite shower room; bedroom two with fitted wardrobes and an en-suite shower room; fitted wardrobes to bedrooms three and four; a fifth bedroom and a family bathroom. Outside there is a large driveway with access to the garage and to the rear is a level garden with an entertaining terrace.



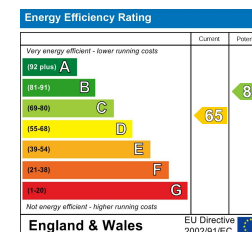


Approx. Gross Internal Floor Area 2186 sq. ft / 203.14 sq. m

All measurements are approximate and quoted in metric with imperial equivalents and for general guidance only and whilst every attempt has been made to ensure accuracy, they must not be relied on. The fixtures, fittings and appliances referred to have not been tested and therefore no guarantee can be given and that they are in working order. internal photographs are reproduced for general information and it must not be inferred that any item shown is included with the property.

For a free valuation, contact the numbers listed on the brochure.

Viewings strictly via the vendors agents Fine & Country on 01737 361014.





Fine & Country The Estate Office, Kingswood, Surrey, KT20 6HS
 Tel: +44 (0)1737 361014
 Email: kingswood@fineandcountry.com
 Web: kingswood.fineandcountry.co.uk
 Fine & Country Sales, Lettings, Land & New Homes

FINE & COUNTRY
 Kingswood