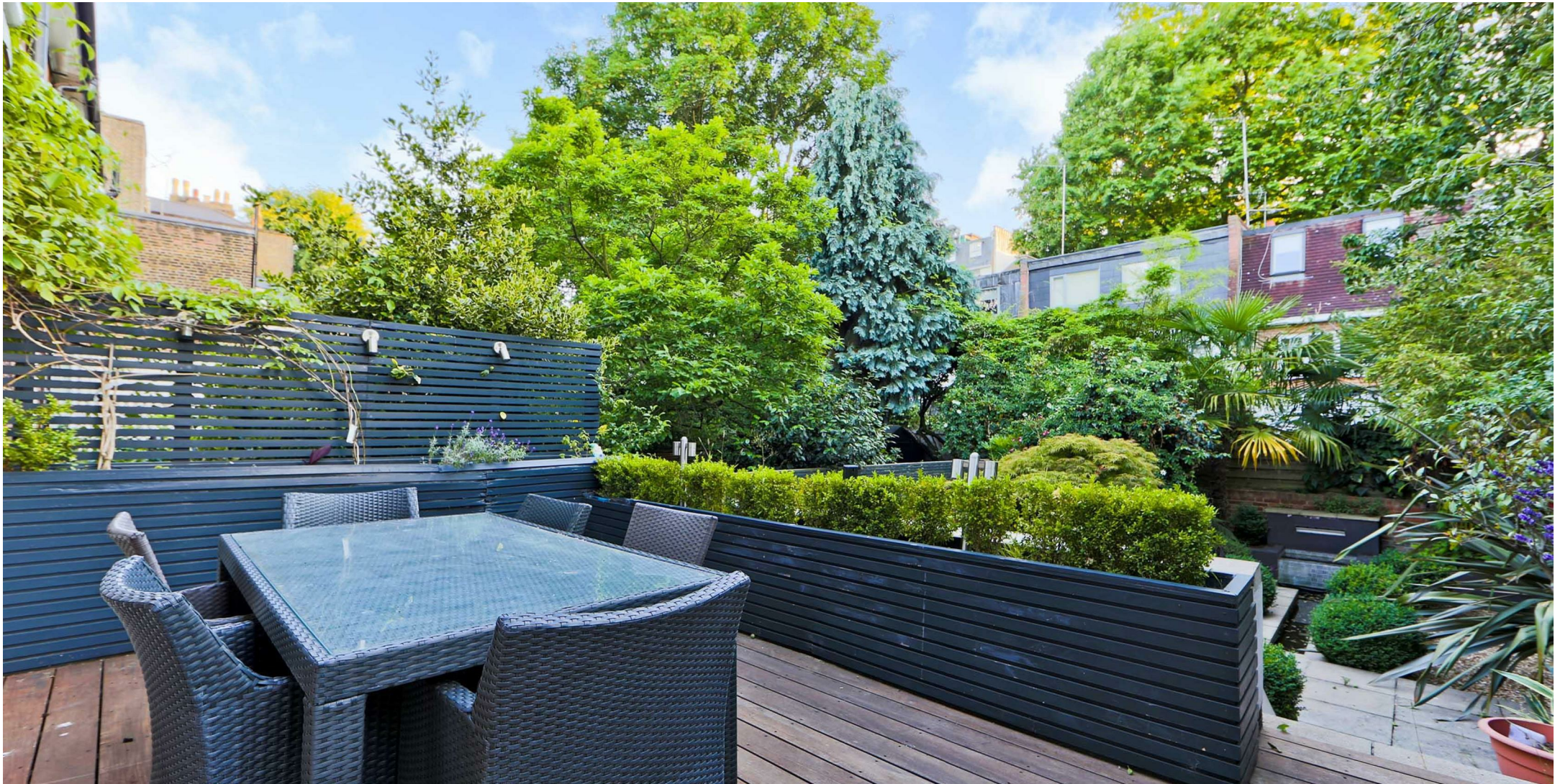


## PORCHESTER TERRACE, BAYSWATER

Red.



**£1,600 PER WEEK**

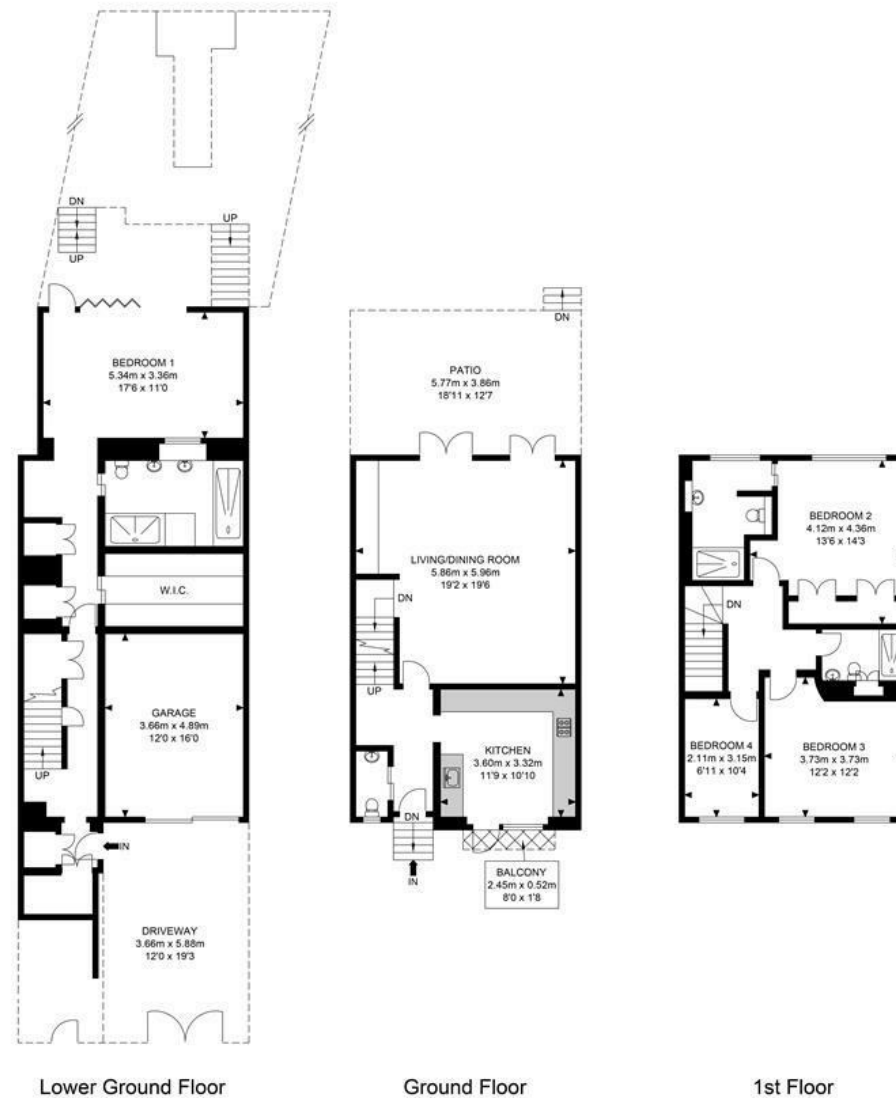
A substantial family home located in the heart of Bayswater, a short walk from the green open spaces of Hyde Park. This lovely four-bedroom, three-bathroom home is arranged over three floors and benefits from a large garage, private patio garden with sun terrace.





## Porchester Terrace

Red.



Lower Ground Floor

Ground Floor

1st Floor

APPROX. GROSS INTERNAL FLOOR AREA 1871.73 SQ FT / 173.89 SQM

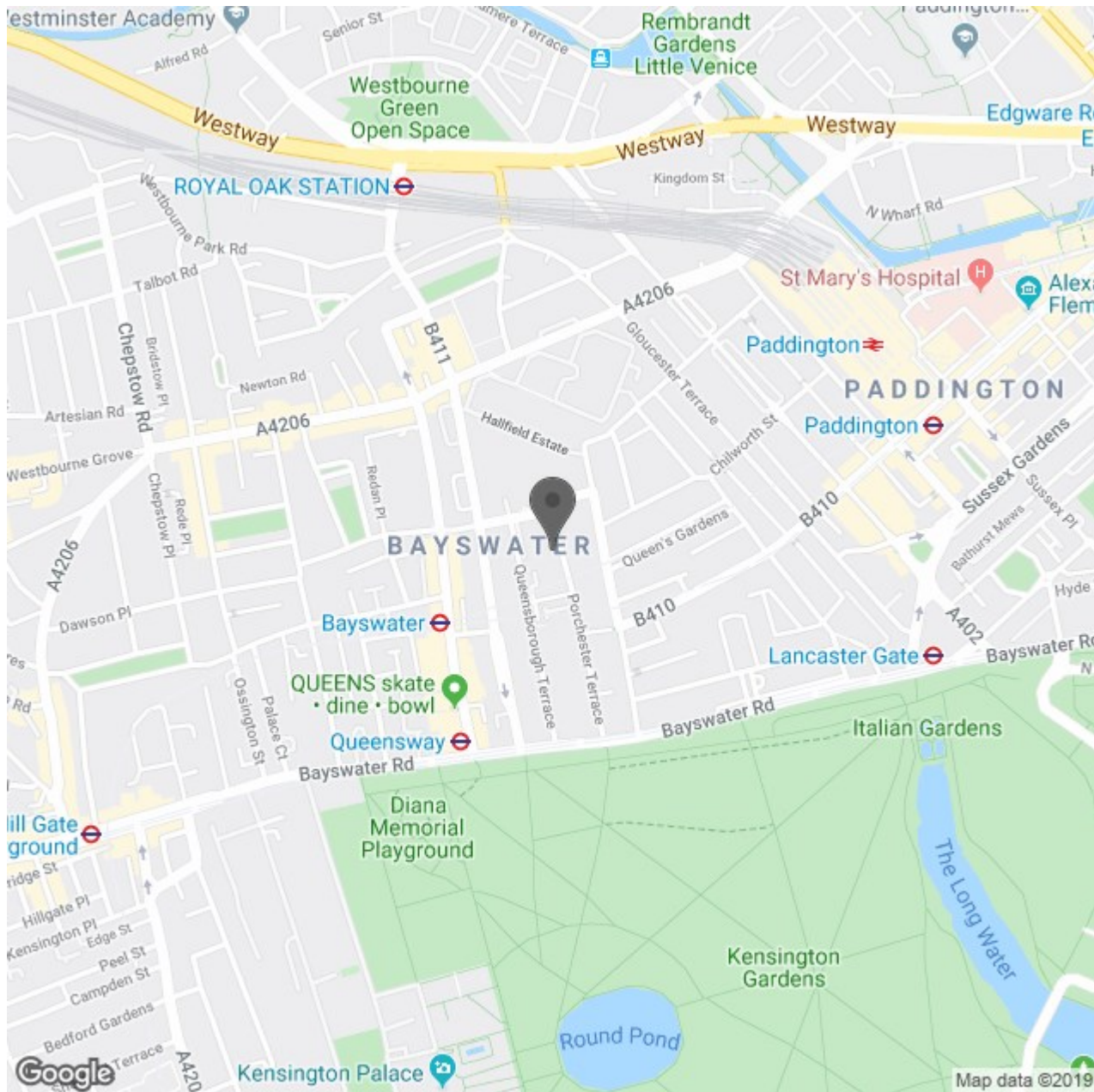
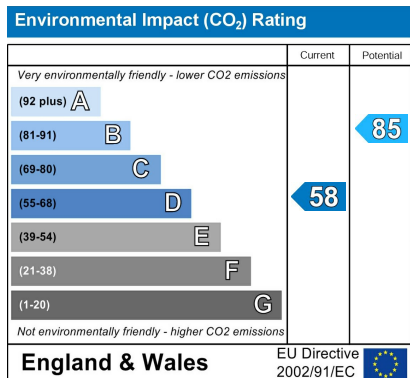
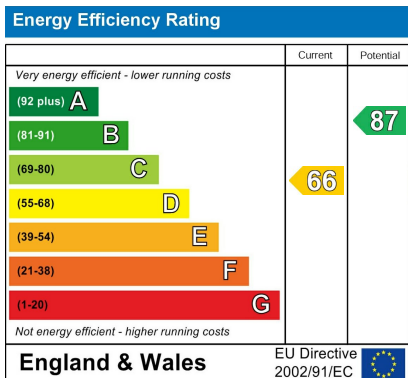
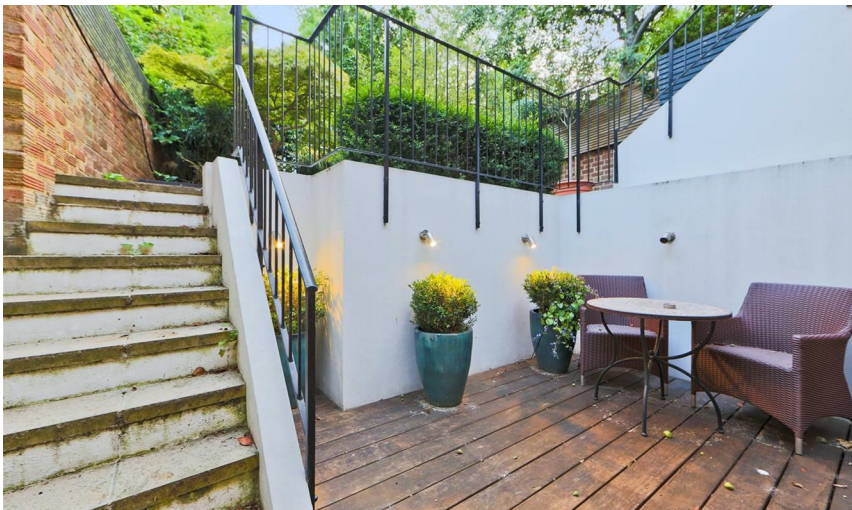
APPROX. GROSS INTERNAL FLOOR AREA INC. BALCONY AREA 1885.40 SQ FT / 175.16 SQM

APPROX. GROSS GARAGE AREA 194.18 SQ FT / 18.04 SQM

Whilst every attempt has been made to ensure the accuracy of the floor plan contained here, measurements of doors, windows, rooms and any other items are approximates and no responsibility is taken for any error, omission or mis-statement. This plan is for illustrative purposes only and should be used as such by any prospective purchaser. The service, system and appliances shown have not been tested and no guarantee as to their operability or efficiency can be given.

© SpacePhoto  
Photography and Floor Plan

- Large Family Home
- The Double Bedrooms
- Three Bathrooms
- Lovely Rear Garden
- Close To Hyde Park
- Off Street Parking & Garage
- One Single Bedroom
- Guest WC
- Excellent Location



**Red.**



Red Property Partnership Ltd  
 Company Registered in England & Wales No. 06946290  
 Registered Office: 501 Kingsland Road, London, E8 4AU  
 VAT Registration Number: 112288536