

PAPER MILL YARD

NORWICH NR1

GUIDE £125,000

City Centre apartment boasting open plan living accommodation and no onward chain. Situated in the popular City Centre development of "Paper Mill Yard" this apartment offers accommodation featuring one double bedroom, bathroom and generous open plan kitchen/living room.

The centre of Norwich boasts two modern shopping malls, a bustling market place and boutique shopping in the numerous lanes and cobbled streets with the two magnificent cathedrals and dominant castle providing a wealth of history dating back to the Norman times. The property also benefits from being close to Norwich Train Station with its regular links to Cambridge and London.

Bedrooms 1

Receptions 1

Bathrooms 1

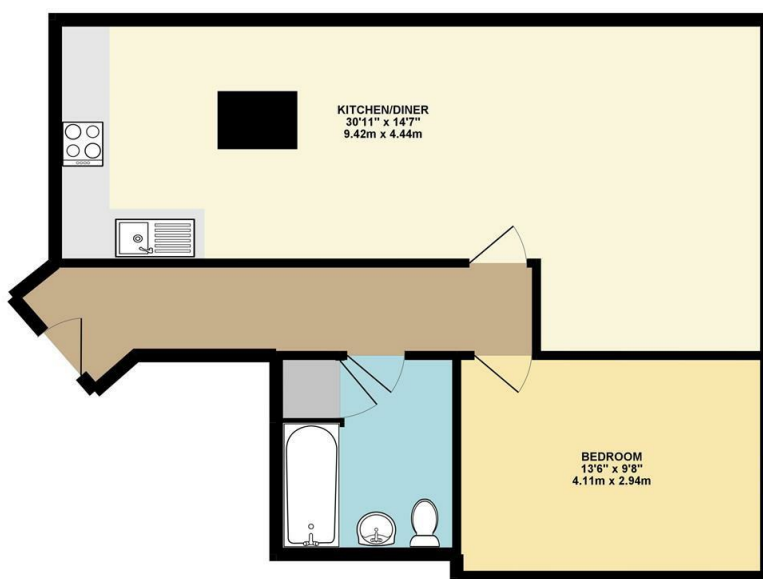


Would you like your property valued?
Call 01603 660000 or visit abbotFox.co.uk for an instant valuation



FLOOR PLAN


GROUND FLOOR 653.71 sq. ft.
(60.73 sq. m.)



TOTAL FLOOR AREA : 653.71 sq. ft. (60.73 sq. m.) approx.

Whilst every attempt has been made to ensure the accuracy of the floorplan contained here, measurements of doors, windows, rooms and any other items are approximate and no responsibility is taken for any error, omission or misstatement. This plan is for guidance purposes only and should be used as such by any prospective purchaser. The services, systems and appliances shown have not been tested and no guarantee as to their operability or efficiency can be given.
Made with Metropix SC019

EPC

Energy Efficiency Rating		Current	Potential
Very energy efficient - lower running costs			
(92 plus) A			
(81-91) B			
(69-80) C			
(55-68) D			
(39-54) E			
(21-38) F			
(1-20) G			
Not energy efficient - higher running costs			
England & Wales		81	84
		EU Directive 2002/91/EC	

Environmental Impact (CO ₂) Rating		Current	Potential
Very environmentally friendly - lower CO ₂ emissions			
(92 plus) A			
(81-91) B			
(69-80) C			
(55-68) D			
(39-54) E			
(21-38) F			
(1-20) G			
Not environmentally friendly - higher CO ₂ emissions			
England & Wales		EU Directive 2002/91/EC	

Disclaimer – In accordance with the Property Misdescriptions Act, the company gives notice that all descriptions, references to condition, necessary permissions for use and other details are given in good faith and believed to be correct, but any intending lessees do not rely on them as statements of fact, but must satisfy themselves by inspection or other means, as to their accuracy.

MAP

