



Heart of village location with untold potential

exclusive to

**SAUNDERS**

[richardsaunders.co.uk](http://richardsaunders.co.uk)



# Chipstead

London 17 miles

Banstead 3 miles

London by rail 35 minutes

M23/M25 Intersection 10 minutes

All times and distances are approximate

Set with nearly half an acre is this substantial four bedroom detached family home in the heart of Chipstead Village.

- | Hallway
- | Dining Room
- | Sitting Room
- | Kitchen
- | Cloakroom
- | Double Garage
- | Four Bedrooms
- | Two Bathrooms
- | Large Private Garden
- | Off Street Parking

Price £1,195,000





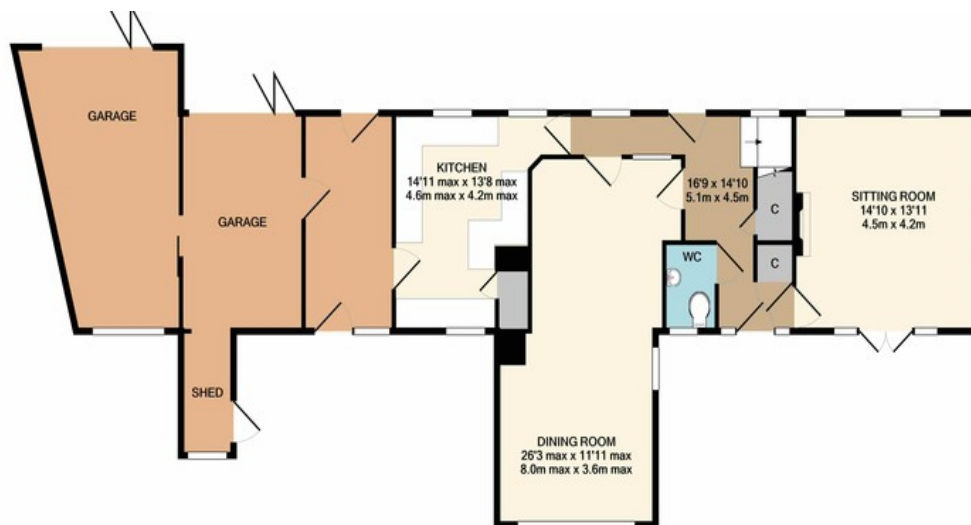


The property is set back from the High Road running through Chipstead Village with an abundance of open countryside in the vicinity as well as Chipstead Golf Club, Rugby Club and numerous other sports facilities nearby. Chipstead Theatre and The White Hart Pub-Restaurant are also within walking distance. Chipstead Station with access to London and local village shops are nearby with further facilities available at Banstead or Coulsdon.

Positioned within the heart of Chipstead Village and set in nearly half an acre is Ensign House. Built circa 1950's Ensign House is a handsome four bedroom detached family home with untold potential. Set back from the road with a sweeping driveway to the front and a double garage to the side with excellent potential for further development. The home itself is bright and airy with versatile accommodation throughout, benefiting from four good size bedrooms and two bath/shower room upstairs. The ground boast two reception rooms and a fitted kitchen. The simply stunning garden is mature and level with different sections and mainly laid to lawn. This is an ideal property for a growing family looking to move into area.

Four Double Bedrooms | Detached Family Home | Double Garage and Off-street Parking | Large Level Garden | Excellent Potential To Extend | Heart Of Chipstead Village | Downstairs Cloakroom | Triple Aspect Sitting Room |



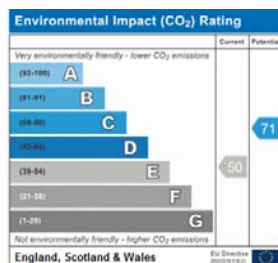
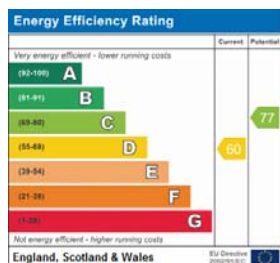


GROUND FLOOR  
APPROX. FLOOR  
AREA 1269 SQ.FT.  
(117.9 SQ.M.)



1ST FLOOR  
APPROX. FLOOR  
AREA 809 SQ.FT.  
(75.2 SQ.M.)

TOTAL APPROX. FLOOR AREA 2078 SQ.FT. (193.1 SQ.M.)  
Made with Metropix ©2019



see more at [richardsaunders.co.uk](http://richardsaunders.co.uk)

IMPORTANT NOTICE TO PURCHASERS: We endeavour to make our sales particulars accurate and reliable, however, they do not constitute or form part of an offer or any contract and none is to be relied upon as statements of representation or fact. The services, systems and appliances listed in this specification have not been tested by us and no guarantees as to their operating ability or efficiency are given. All measurements have been taken as guide to prospective buyers only, and are not precise. If you require clarification or further information on any points, please contact us, especially if you are travelling some distance to view.

Viewing  
Please call us to arrange  
a viewing appointment

1 Waterhouse Lane  
Kingswood  
01737 360000

2 High Street  
Banstead  
01737 363333

Residential Lettings  
All Areas  
01737 370700

**SAUNDERS**

[richardsaunders.co.uk](http://richardsaunders.co.uk)