



1,064
sq ft



2



2



2

REDBRIK
ESTATE AGENTS



Helping you find
your home at...

Holymoor Road, Holymoorside

£299,995

EXCITING DEVELOPMENT OPPORTUNITY. Set back from the road on a fantastic plot is this two bedroom detached dormer bungalow.

- Two Bedroom Detached Bungalow
- Fitted Kitchen With Integrated Cooking Appliances
- Separate Dining Room
- Spacious Bay Window Lounge
- No Onward Chain
- Fitted Bathroom With Three Piece Suite
- Landscaped Enclosed Gardens
- Off Street parking For Numerous Cars & Garage
- Gas Central Heating, Upstairs W.C, Sun Room
- Energy Rating TBC.

Located in the sought after village location of Holymoorside, this deceptively spacious property provides in excess of 1000 sq. ft of flexible, well ordered accommodation set across two levels with further scope for a prospective purchaser to modernise and re-configure to their individual requirements. Field views to the rear and direct access to the Peak District National park, the property is available with NO ONWARD CHAIN

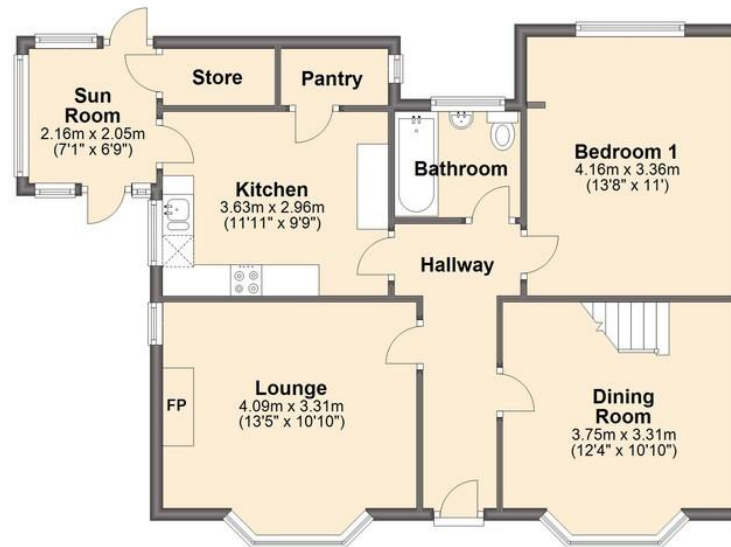




We endeavour to make these particulars as accurate as possible, but they should only be used as guidance and they do not constitute any part of the contract. All measurements are approximate and no guarantees are made to the services, heating systems, appliances (if any) or fittings as to their working order and no warranty can be given or implied.

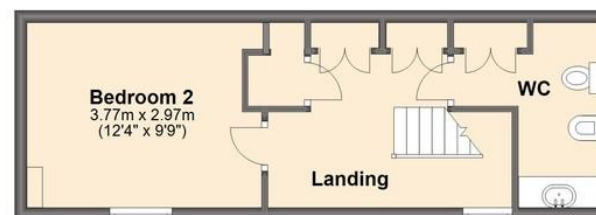
Ground Floor

Approx. 71.6 sq. metres (770.5 sq. feet)



First Floor

Approx. 27.4 sq. metres (294.4 sq. feet)



Total area: approx. 98.9 sq. metres (1064.9 sq. feet)

You may download, store and use this material for your own personal use and research. You may not republish, retransmit, redistribute or otherwise make the material available to any party or make the same available on any website, on or off line service or hard copy without the website owner's express written consent. The website owner's copyright must remain on all reproductions of material taken from this website.

