



Lambert Road, Brixton, SW2

2 bedroom flat - purpose built for sale

£535,000

Share of Freehold

Property Details

A characterful, two double bedroom, purpose-built Victorian flat with a South-facing private garden on a popular residential street, tucked away quietly off Brixton Hill. With over 700 square feet of internal living space and two comfortable double bedrooms of a similar size, the property will appeal to a wide range of potential purchasers. The property is entered through a private entrance and comprises a semi-open plan reception room with double doors that lead out onto the South-facing private garden, a contemporary kitchen a modern bathroom, two double bedrooms and a convenient separate WC

Council tax band D

EPC rating C (70)

Features

- Two double bedrooms
- Victorian purpose built
- Chain-free
- Private garden
- Own front door
- Bright and airy throughout
- Walking distance to the Northern and Victoria tube lines
- Share of freehold



Lambert Road, Brixton, SW2



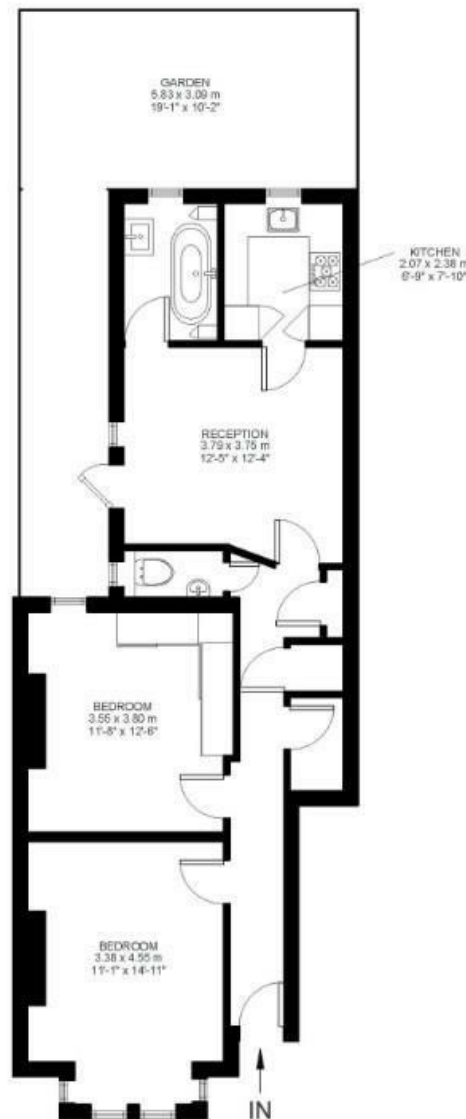
2 Bed flat

Approx internal area:

705 sqft 66 sqm

While we do try our very best, floor plans are produced as a guide only and we take no responsibility for the precise accuracy with which any property is represented

Lambert Road



Ground Floor



Lambert Road, Brixton, SW2

