



Ashfield Road, N14 7LA

£525 pw

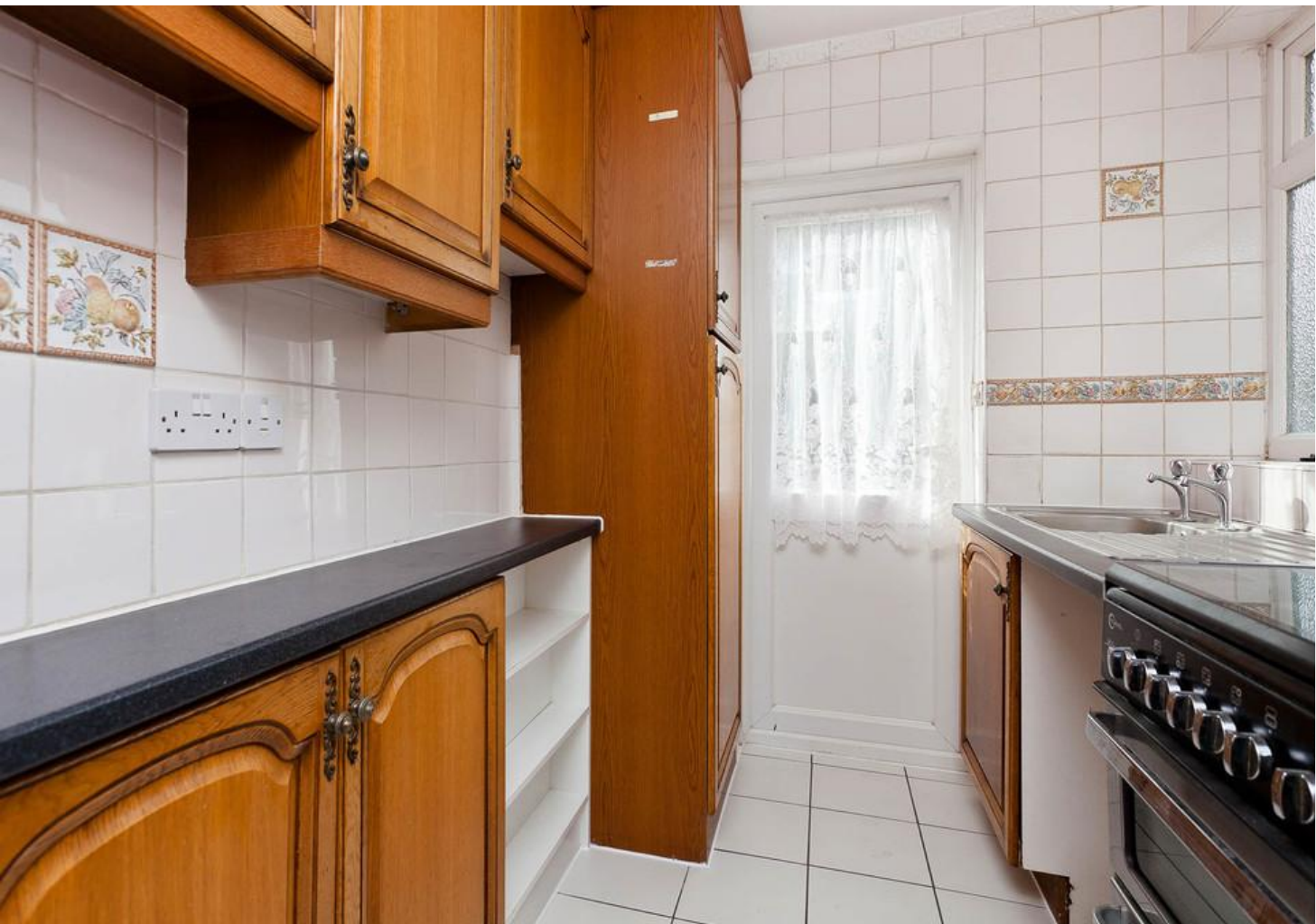
# Ashfield Road

£525 pw

Beautifully presented four bedroom semi-detached Victorian house arranged over three floors on a quiet residential turning 0.6 miles from Arnos Grove tube station. The house offers two reception rooms & a separate kitchen, private west facing garden. The upper levels include a four double bedrooms, a private separate study room and modern three piece bathroom suite. Benefits also include a front drive way and side access to the private garden.

- Four bedroom house
- Private garden with dual access
- 0.6 miles from Arnos Grove tube
- Two separate reception rooms
- Separate study room
- Two bathrooms three W/C 's
- Furnished / Part furnished
- Available now





# Notes

---

#### Archway Office

---

671 Holloway Road  
London, N19 5SE

---

T (0)20 7619 3750

---

---

#### Highbury Office

---

90 Highbury Park  
London N5 2XE

---

T (0)20 7354 9111

---

---

#### Stroud Green Office

---

167 Stroud Green Road  
London N4 3PZ

---

T (0)20 7281 2000

---

---

#### General Contact

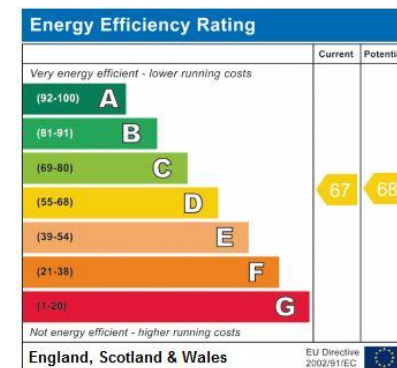
---

E [info@davidandrew.co.uk](mailto:info@davidandrew.co.uk)

---

W [www.davidandrew.co.uk](http://www.davidandrew.co.uk)

---



#### Agent's Note:

Whilst Care has been exercised in the preparation of these sales particulars, statements about the property must not be relied upon as representations of statements or fact. Prospective purchasers must make and rely upon their own enquiries and those of professional representatives. The company accept not liability for any error contained in these particulars.

