



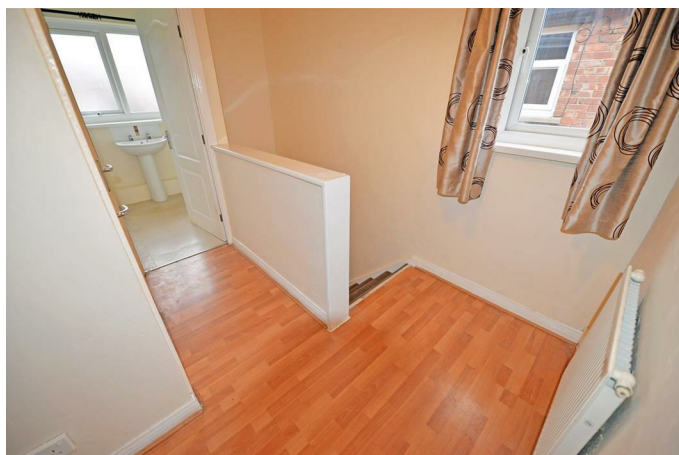
19 Chiltern Avenue, Chester Le Street, DH2 3BD

£49,950

Situated on Chiltern Avenue in Chester le Street, we are delighted to bring to the market this one bedroom semi detached upper flat perfect for a first time buyer or investor. The flat has double glazing and gas central heating is via a radiators. The accommodation briefly comprises; entrance lobby, landing, lounge, kitchen, bathroom/wc and double bedroom. Externally there is gardens to the front and shared garden to the rear. Newly installed boiler with 10 year guarantee and roof insulation with guarantee. Viewing is recommended at this sensible asking price.

Entrance lobby

Landing



With a double glazed window, storage cupboard and internal doors opens through into the kitchen, bathroom/wc and the lounge.

Lounge

12'0" x 11'3" (3.67 x 3.45)



With a radiator and a double glazed window overlooks the front aspect.

Double bedroom

11'11" x 10'11" (3.64 x 3.33)



With a radiator and a double glazed window.

Kitchen

9'9" x 8'5" (2.99 x 2.57)



The kitchen is fitted with a range of floor and wall units with working surfaces which include a sink unit which is fitted with a mixer tap. There is tiled splash backs and plumbing is provided for a washing machine and a double glazed window overlooks the rear aspect.

Bathroom/wc



With a three white three piece suite which comprises; low level wc, wash hand basin and a panelled bath which is fitted with a shower above. There is a radiator and a double glazed window overlooks the front aspect.

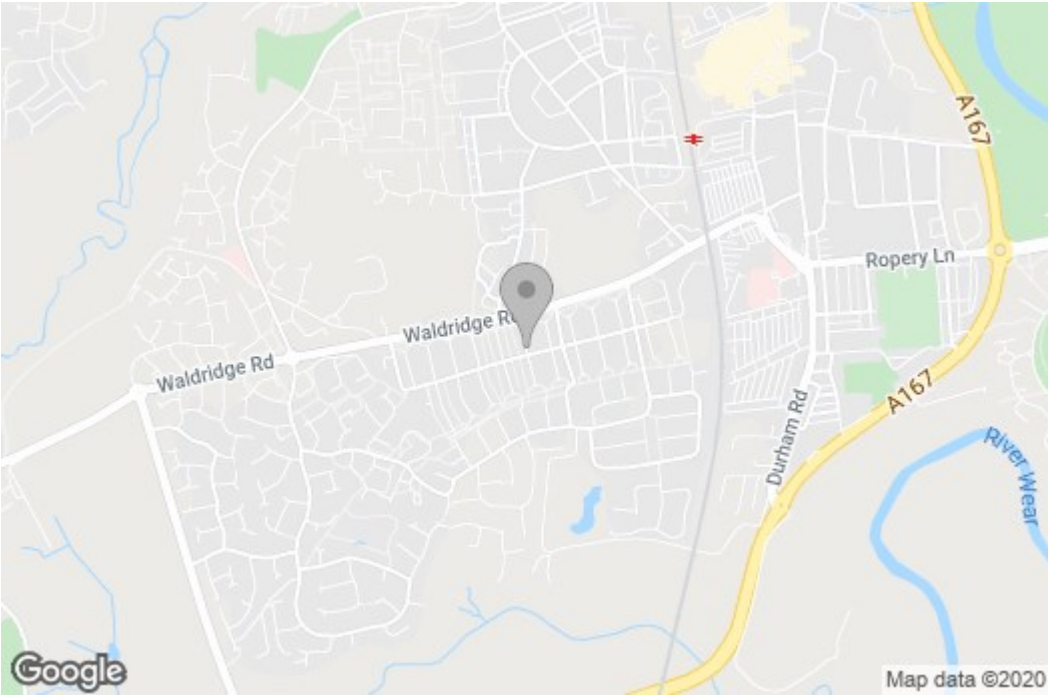
External



At the front of the home there is a small garden area and a shared garden is located with a shared garden at the rear which has two external storage outhouses.

Floor Plan

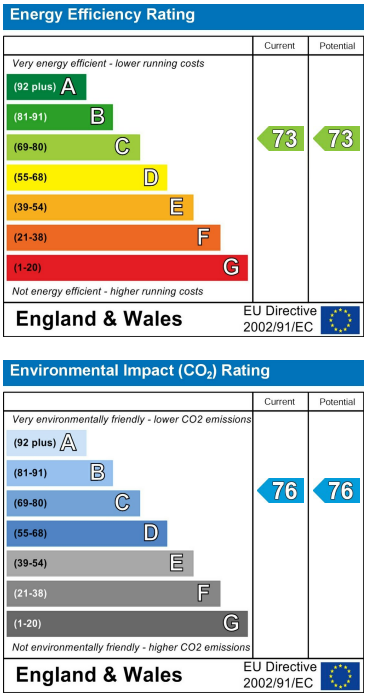
Area Map



These particulars, whilst believed to be accurate are set out as a general outline only for guidance and do not constitute any part of an offer or contract, purchaser should not rely on them as statements of representation of fact, but must satisfy themselves by inspection or otherwise as to their accuracy. No person in this firm's employment has the authority to make or give an representation or warranty in respect of the property.

429 Durham Road
Gateshead
NE9 5AN

Energy Efficiency Graph



0191 4874211
home@gordon-brown.co.uk
www.gordon-brown.co.uk