



Headley Grove, Tadworth



## Price

£325,000

## Freehold

- Two bedroom bungalow
- South facing rear garden
- Conservatory
- Separate lounge
- Refitted kitchen
- Refitted bathroom
- Garage
- Quiet location
- No ongoing chain

The Personal Agent are thrilled to present an excellent opportunity for first time buyers and downsizers alike.

This two bedroom bungalow, situated peacefully within a popular residential cul-de-sac on Epsom Downs is a real tardis of a home, and ready to move into having been loved and looked after by the current owners.

The property is offered with no ongoing chain, comes with the added bonus of a garage in block, and you can move straight in!



When entering the bungalow you have a storage cupboard to your right. You then walk through to the lounge which is a good size and leads to a inner hallway which also has a storage cupboard plus access to both bedrooms, the master being a good size double and the second being a good size single.

There's a refitted bathroom as well as a refitted kitchen which has access to a conservatory.

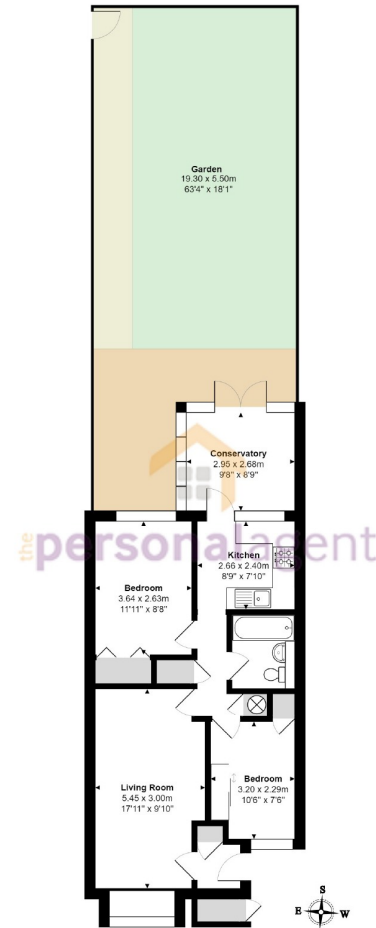
The property has a garage which can be accessed via the rear garden. The property is double glazed and has gas central heating.

For the golf enthusiasts, there are four world-renowned golf clubs, Kingswood Golf and Country club, Surrey Downs, Walton Heath and the RAC golf club all close by. Horse Riding schools and stabling can be found in Kingswood, Chipstead, Tadworth and Walton on the Hill. Burgh Heath is situated in between Epsom Downs, Banstead and Kingswood. It is a popular residential area offering a variety of properties. This location is ideal for family walks, dog walks, cycling, rambling or jogging.

The area is ideally situated for transport links with excellent access to the M25, Epsom, Sutton, Redhill and Reigate. Local amenities include a large ASDA super-store as well as a useful local parade of shops. There are a variety of local excellent schools nearby.







Ground Floor

Headley Grove, Tadworth  
Total Area: 63.2 m<sup>2</sup> ... 680 ft<sup>2</sup> (excluding garden)  
FOR ILLUSTRATIVE PURPOSES ONLY.

Whilst every attempt has been made to ensure the accuracy of the floor plan shown, all measurements, positioning, fixtures, fittings and any other data shown are an approximate interpretation for illustrative purposes only and are not to scale.

No responsibility is taken for any error, omission, mis-statement or use of data shown.

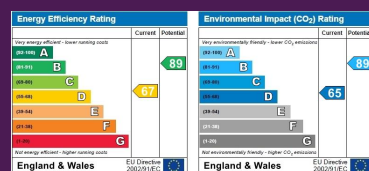
The above statement applies to both 'Still Moving London LTD' and the Company or individual displaying this floor plan.

Unauthorised reproduction prohibited.

© Still Moving London LTD (www.stillmoving.london)



Please Note: Whilst every attempt has been made to ensure the accuracy of the floorplans contained here, measurements of doors, windows and room areas are approximate and no responsibility is taken for any error, omission or mis-statement. These plans are for representation purposes only and should be used as such by and prospective purchaser. The services, systems and appliances listed in the specification have not been tested by The Personal Agent and no guarantee as to their operating ability or their efficiency can be given. All images and text used to advertise our properties are for the sole use of The Personal Agent Ltd.



141 High Street, Banstead, Surrey, SM7 2NS  
Tel: 01737 333699  
Email: rupert@thepersonalagent.co.uk



