



MILES ESTATE AGENTS

43 Quantock View Bishops Lydeard  
Taunton TA4 3AP





A spacious and significantly extended 4 bedroom semi detached house with superb long garden and views to the Quantock Hills in this ever popular village location. 2 reception rooms, 2 bathrooms and downstairs cloakroom - early viewing recommended.





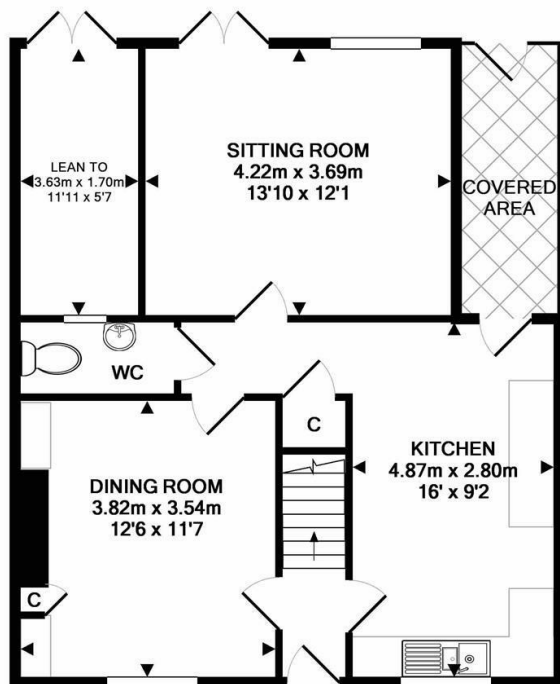


## Features:

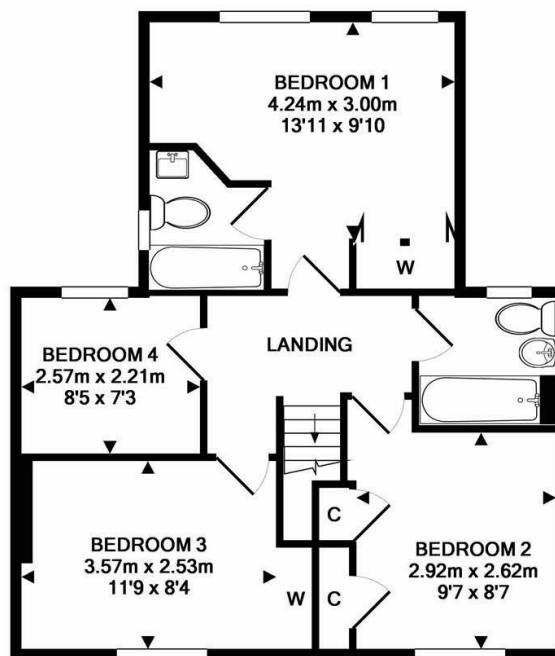
- Entrance Hall
- Kitchen/Breakfast Room
- Dining Room
- Lounge
- Master Bedroom with En Suite
- 3 Further Good Size Bedrooms
- Family Bathroom
- Superb Long Garden with Views
- Useful Outbuilding
- Solar Panels
- Council Tax Band B





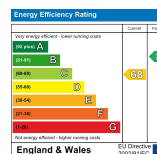


GROUND FLOOR  
APPROX. FLOOR  
AREA 56.8 SQ.M.  
(612 SQ.FT.)



1ST FLOOR  
APPROX. FLOOR  
AREA 50.6 SQ.M.  
(545 SQ.FT.)

TOTAL APPROX. FLOOR AREA 107.5 SQ.M. (1157 SQ.FT.)  
Made with Metropix ©2019



Viewings strictly through the selling agents:

**Miles Estate Agents**

2 Piffin Lane, Bishops Lydeard, Taunton,  
Somerset, TA4 3AS

**Tel: 01823 470 500**

[lydeard@milesestateagents.co.uk](mailto:lydeard@milesestateagents.co.uk)

[www.milesestateagents.co.uk](http://www.milesestateagents.co.uk)



**rightmove**

**Zoopla.co.uk**

**OnTheMarket.com**

**MILES ESTATE AGENTS**

