



1,476
sq ft



4



2



2

REDBRIK
ESTATE AGENTS

Helping you find
your home at...

Lilywood Close, Calow, Chesterfield

£325,000

An outstanding four-bedroom detached home, located within The Croft, a popular new development in the village of Calow.

- Superior Detached House
- Four Good Size Bedrooms
- Spacious Dining Kitchen With Integrated Appliances
- Two Contemporary Bath/Shower Rooms, Including En-Suite To Master Bedroom
- High Specification New Build
- French Doors Leading Onto Patio Area & Landscaped Rear Garden
- Integral Garage, Block Paved Driveway
- Utility Room, Downstairs WC
- 10 Year NHBC Warranty
- Available Now.

DETAILS This distinctive detached four-bedroom home offers generously proportioned accommodation, a stunning bay window to the living area and finished to a bespoke contemporary standard throughout.

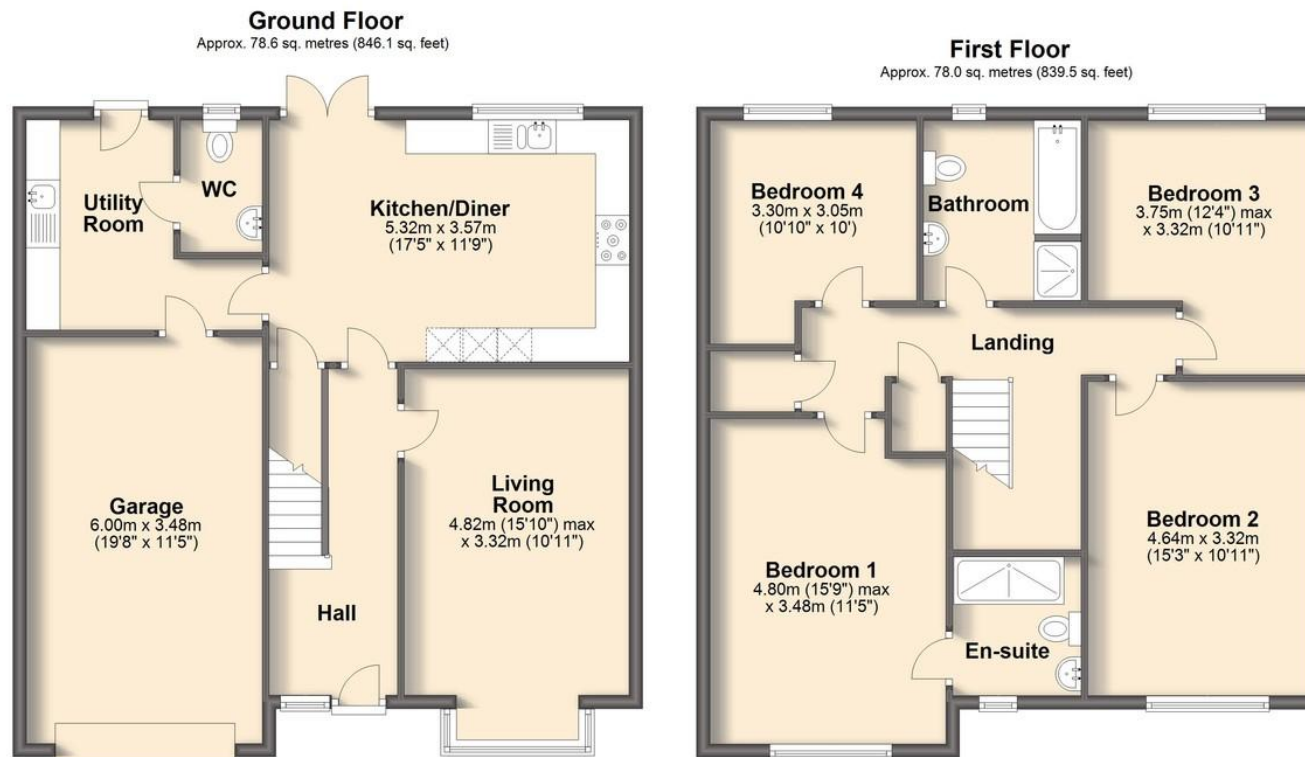
The property boasts landscaped gardens, patio area, block paved driveway and integral garage, to complete this desirable home. The large kitchen / family room features designer kitchen units set beneath beautiful work surfaces, with a range of built-in appliances including double oven, microwave, stylish gas hob with extractor canopy over, fridge freezer and dishwasher, with space for a washing machine and dryer are provided within the utility area. Also featuring a walk-in shower in the en-suite, a family bathroom with a separate shower and a downstairs cloakroom all of which are fitted with contemporary suites and tiles. An outstanding four-bedroom home offering high end contemporary living throughout.

THE LOCATION Situated in the bustling village of Calow, The Croft is ideally located on the outskirts of Chesterfield town Centre. It is also just a few minutes drive from the M1 and has great transport links to Chesterfield, Derby, Nottingham and Sheffield. Both East





We endeavour to make these particulars as accurate as possible, but they should only be used as guidance and they do not constitute any part of the contract. All measurements are approximate and no guarantees are made to the services, heating systems, appliances (if any) or fittings as to their working order and no warranty can be given or implied.



Total area: approx. 156.6 sq. metres (1685.6 sq. feet)

You may download, store and use this material for your own personal use and research. You may not republish, retransmit, redistribute or otherwise make the material available to any party or make the same available on any website, on or off line service or hard copy without the website owner's express written consent. The website owner's copyright must remain on all reproductions of material taken from this website.