



## Hinton Road, Herne Hill, SE24

2 bedroom flat - conversion for sale

**£465,000**

Share of Freehold

### Property Details

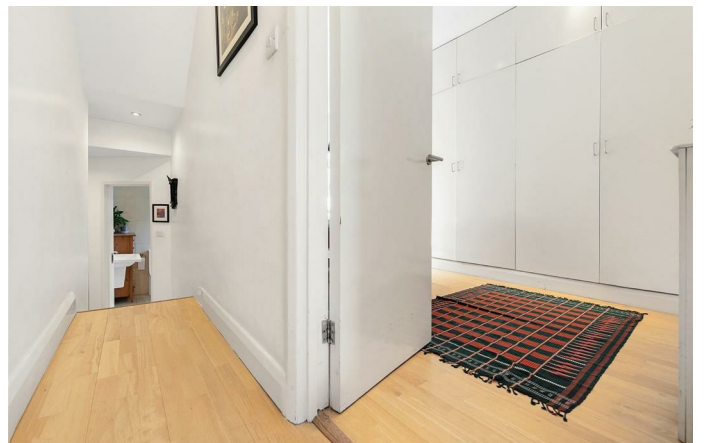
This is a wonderful two double bedroom garden flat on the first floor of an attractive Victorian converted house, nestled on a quiet road in a popular residential pocket between Herne Hill (15-minute walk), Brixton (16-minute walk), and Loughborough Junction (6-minute walk). Ruskin Park is also moments away. The entrance to the apartment is securely situated on the middle floor and comprises an open plan reception room, two similarly sized double bedrooms, a modern bathroom, and stairs down to a private South-facing garden. Share of freehold and chain-free.

### Features

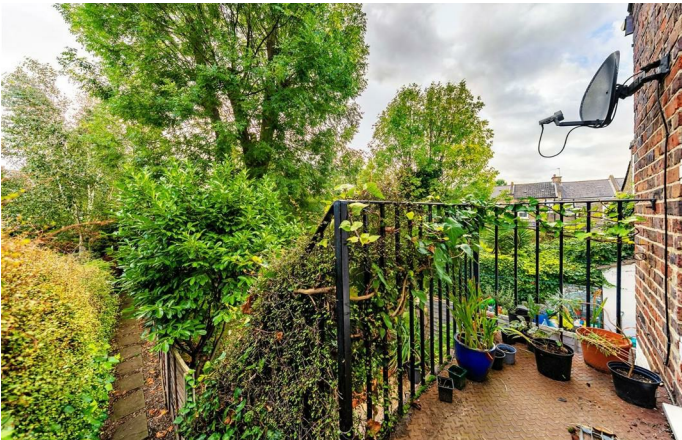
- Two double bedrooms
- Victorian conversion
- South-facing private garden
- Close to transport links
- Close to Ruskin Park
- Share of freehold
- Chain-free

Council tax band      EPC rating D (68)











Hinton Road, Herne Hill, SE24



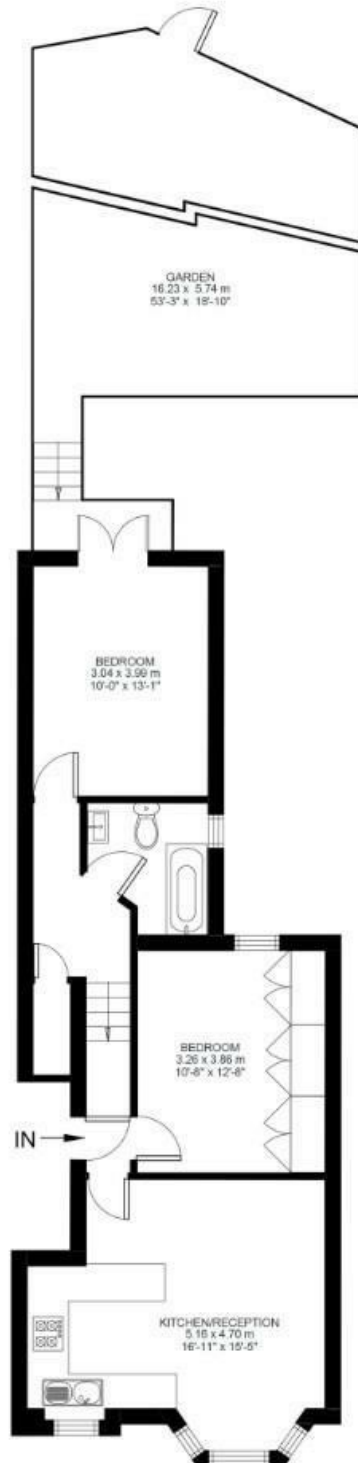
2 Bed flat

Approx internal area:

**642 sqft 60 sqm**

While we do try our very best, floor plans are produced as a guide only and we take no responsibility for the precise accuracy with which any property is represented

Hinton Road



First Floor



Hinton Road, Herne Hill, SE24

