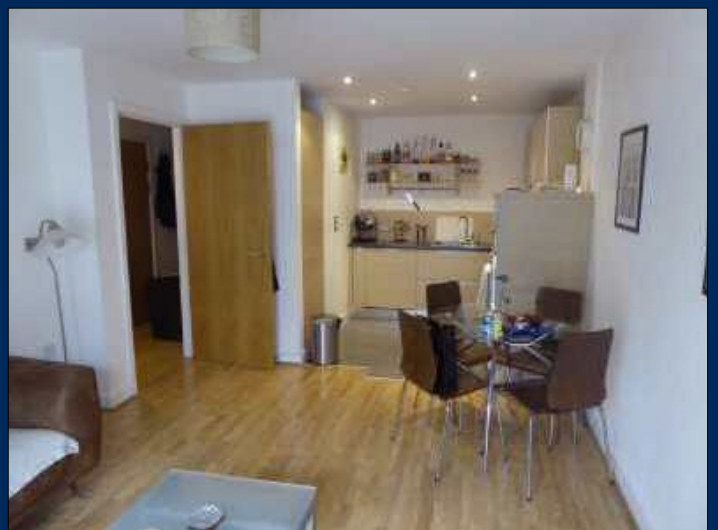


jordan fishwick

Estate Agents, Lettings and Management



Apt 106, Masson Place, Green Quarter, M4 4AJ

Price £135,000

This first floor one bedroom immaculately presented apartment is located in popular Green Quarter, a short walk into the city centre. The property comprises of entrance hall with storage cupboard housing washer/dryer, living room with balcony and modern fully fitted kitchen which comes fully equipped with integrated fridge/freezer, microwave, oven and hob and dishwasher. The bedroom is an exceptionally good size with recess area for wardrobes. Luxury bathroom with tiled walls and floor, shower over the bath. No Parking. Council Tax Band C. Tenanted on a rolling contract

Entrance Hallway

Laminate flooring, double storage cupboard with washing machine. Wall mounted electric heater. Doors radiating to living room, bedroom and kitchen.

Living Room 3.6m x 6.8m (11'10" x 22'4")

Spacious open plan living/kitchen area with fitted carpet in living area, double glazed window and sliding patio door opening to balcony. Television and telephone connection points. Wall mounted electric heater.

Kitchen

The kitchen has fitted appliances, fridge, freezer, dishwasher, microwave, oven, hob and extractor hood. Stainless steel one and a half

bowl sink unit. Inset spot lights

Master Bedroom 3.3m x 4.6m (10'10" x 15'1")

Fitted carpet, double glazed window. Recess area for wardrobe. Wall mounted electric heater.

Bathroom

Luxury bathroom with bath and shower attachment, wash hand basin and w.c. Fitted mirror and electric shaver point. Tiled walls and floor. Chrome heated towel rail

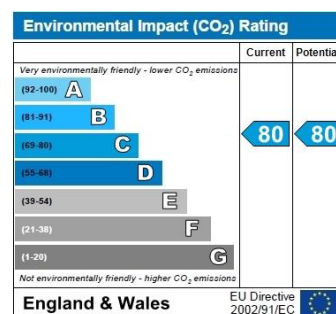
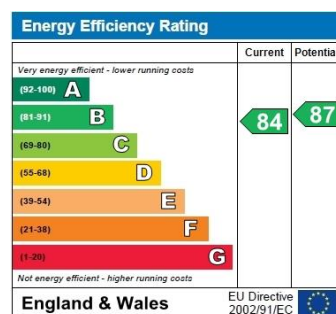
Additional Information

Lease: 150 years from 2005

Service Charge: £115 PCM

including buildings insurance

Ground Rent £250 per annum



68 The Arches, Whitworth Street West, Manchester, M1 5WQ, England

0161 833 9499 manchester@jordanfishwick.co.uk www.jordanfishwick.co.uk

Offices also at: Chorlton | Didsbury | Disley | Glossop | Hale | Macclesfield | Manchester | Sale | Wilmslow | Withington



These particulars are believed to be accurate but they are not guaranteed and do not form a contract. Neither Jordan Fishwick nor the vendor or lessor accept any responsibility in respect of these particulars, which are not intended to be statements or representations of fact and any intending purchaser or lessee must satisfy himself by inspection or otherwise as to the correctness of each of the statements contained in these particulars. Any floorplans on this brochure are for illustrative purposes only and are not necessarily to scale.