



INVESTMENT POTENTIAL OR HOME WITH INCOME

2 SANDRINGHAM VILLAS FLATS 1 & 2
STOPFORD ROAD, ST. HELIER, JERSEY, JE2 7LB

Offers In Excess Of £400,000



INVESTMENT POTENTIAL OR HOME WITH INCOME

Ref No:JES140034 • 2 apartments in landmark Victorian house • Apt 1 - 2 bedroom/1 bathroom • Apt 2 - 1 bedroom/1 bathroom • Completely refurbished • Restored period features • Potential for 6% return • Share Transfer

Description

- Great value - 2 bed apartment & 1 bed apartment
- 1 bed apartment on ground floor
- 2 bed duplex on first & second floor
- Great central location
- Walk to work
- Good buy to let with over 6% return
- Share Transfer

Two bright and airy apartments within a Victorian building, a 1 bedroom apartment on the ground floor and a 2 bedroom duplex on first and second floors. Would be ideal for those looking to get onto the property ladder, or as an investment with a potential return of over 6%.

Each apartment gives the feeling of space with high ceilings and they also benefit from the retention of many restored period features, including fireplaces, ornamental plaster work and skirting boards. The whole building has recently been refurbished including new carpets through out and kitchens and bathrooms. Although the apartments do not have parking it is in a resident's parking zone. The current owner rents a parking space nearby and this is transferable.

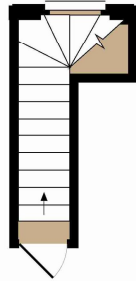
Everything you need is on your doorstep including food stores, restaurants, shops and cafes.

Services: All mains excluding gas.

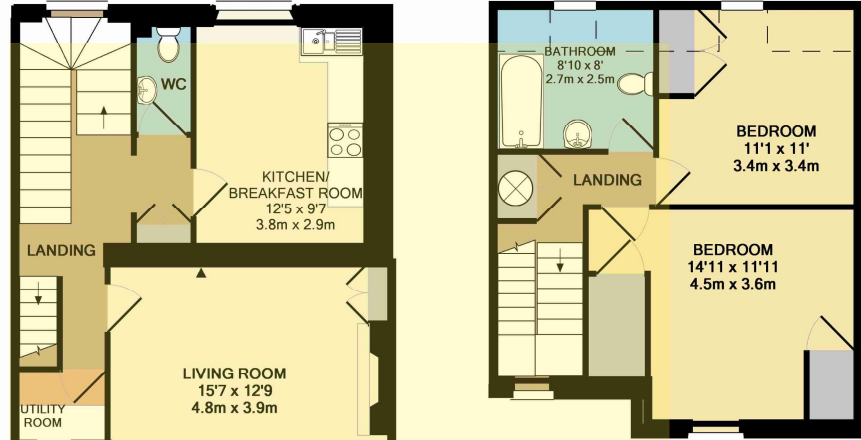
Share transfer

Viewing Strictly by appointment with Savills.





GROUND FLOOR
APPROX. FLOOR
AREA 54 SQ.FT.
(5.0 SQ.M.)

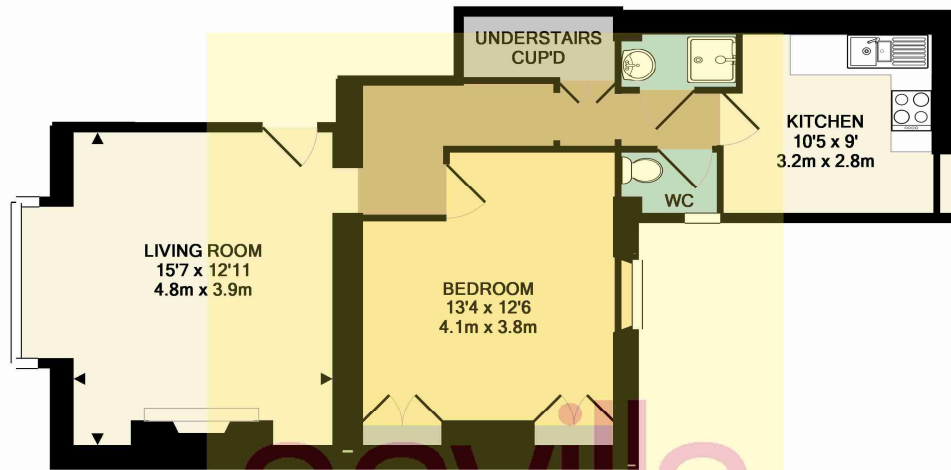


2ND FLOOR
APPROX. FLOOR
AREA 446 SQ.FT.
(41.4 SQ.M.)

1ST FLOOR
APPROX. FLOOR
AREA 503 SQ.FT.
(46.7 SQ.M.)

TOTAL APPROX. FLOOR AREA 1002 SQ.FT. (93.1 SQ.M.)

Whilst every attempt has been made to ensure the accuracy of the floor plan contained here, all measurements are approximate and no responsibility is taken for any errors. You may not make a permanent copy of or reproduce this floor plan in any form as the intellectual rights belong to Jersey Floor Plans.
Made with Metropix ©2014



TOTAL APPROX. FLOOR AREA 612 SQ.FT. (56.9 SQ.M.)

Whilst every attempt has been made to ensure the accuracy of the floor plan contained here, all measurements are approximate and no responsibility is taken for any errors. You may not make a permanent copy of or reproduce this floor plan in any form as the intellectual rights belong to Jersey Floor Plans.



Savills Jersey

+44 (0) 1534 722 227

savills.co.uk

Important notice: Savills, their clients and any joint agents give notice that: 1. They are not authorised to make or give any representations or warranties in relation to the property either here or elsewhere, either on their own behalf or on behalf of their client or otherwise. They assume no responsibility for any statement that may be made in these particulars. These particulars do not form part of any offer or contract and must not be relied upon as statements or representations of fact. 2. Any areas, measurements or distances are approximate. The text, photographs and plans are for guidance only and are not necessarily comprehensive. It should not be assumed that the property has all necessary planning, building regulation or other consents and Savills have not tested any services, equipment or facilities. Purchasers must satisfy themselves by inspection or otherwise.