



Crownstone Road, Brixton, SW2

£550,000

2 bedroom flat - conversion for sale

Property Details

This characterful two double bedroom flat is nestled quietly on the top-floor of an impressive Victorian mansion block on Crownstone Road. The property has 730 square feet of internal living space and comprises a separate living room at the front of the building, a contemporary kitchen with ample dining space, two comfortable double bedrooms share a modern bathroom and stairs down to a lovely communal garden network. Effra Mansions is positioned with a supermarket at the end of the road and it's a five-minute walk from Brockwell Park and Brixton town centre. The restaurants, cafes and the French market in Herne Hill are all within reach, a pleasant fifteen-minute walk through Brockwell Park.

Features

- Two double bedrooms
- Victorian mansion block
- Period features
- Shared Garden
- Over 730 square feet of internal living space
- Three-minute walk to Brockwell Park
- A ten-minute walk to Brixton tube station and Brixton Village

Council tax band C

EPC rating D (61)



Crownstone Road, Brixton, SW2

K

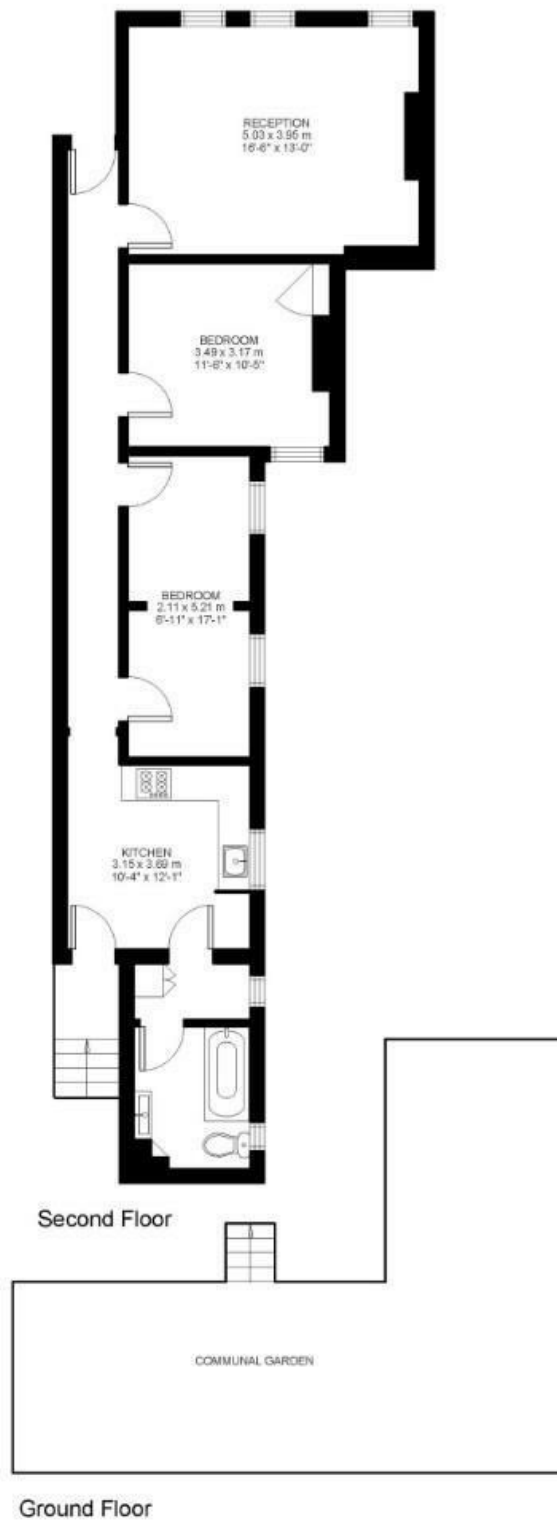
2 Bed flat

Approx internal area:

783 sqft 73 sqm

While we do try our very best, floor plans are produced as a guide only and we take no responsibility for the precise accuracy with which any property is represented

Crownstone Road



Crownstone Road, Brixton, SW2

