

Philadelphia House, Cross Bedford Street, Sheffield S6

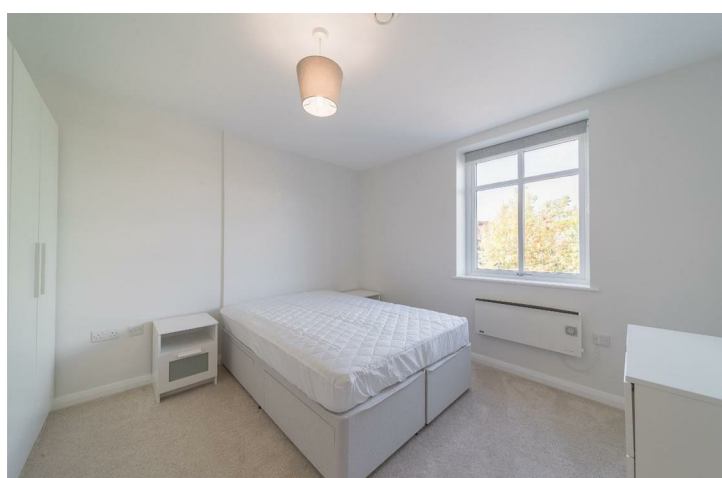
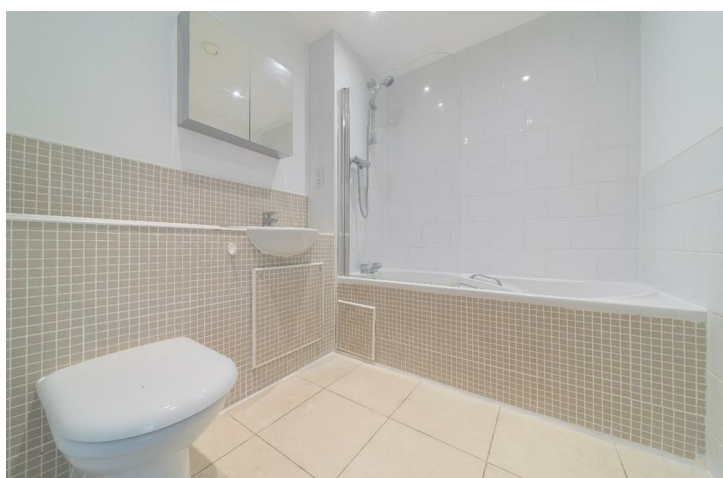


£750 Per month



Contemporary TWO BEDROOM apartment that features SECURE PARKING and BALCONY located opposite the Kelham Island District. This first floor, purpose built apartment has been recently been re-decorated throughout and features new furniture, as well as having two bedrooms, modern bathroom and a secure car parking space. The development sits near the main ring road and Sheffield Supertram, as well as being a short walk away from the bars and restaurants in Kelham Island.

- * First floor, two bedroom apartment
- * Secure undercroft parking
- * Re-decorated throughout
- * Balcony
- * Near ring road and Supertram
- * Short walk to Kelham Island
- * Available NOW for professional let



Energy Efficiency Rating		
	Current	Potential
Very energy efficient - lower running costs		
(92 plus) A		85
(81-91) B	75	
(69-80) C		
(55-68) D		
(39-54) E		
(21-38) F		
(1-20) G		
Not energy efficient - higher running costs		
England & Wales		EU Directive 2002/91/EC
Environmental Impact (CO₂) Rating		
	Current	Potential
Very environmentally friendly - lower CO ₂ emissions		
(92 plus) A		77
(81-91) B	78	
(69-80) C		
(55-68) D		
(39-54) E		
(21-38) F		
(1-20) G		
Not environmentally friendly - higher CO ₂ emissions		
England & Wales		EU Directive 2002/91/EC