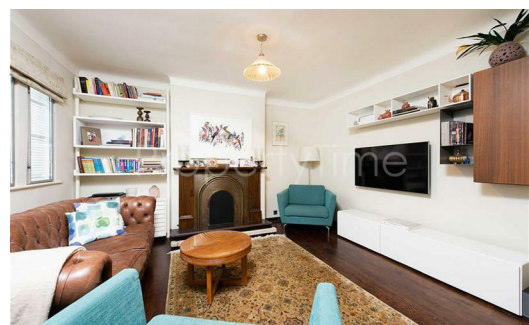


Lyttelton Road

| Hampstead Garden Suburb North | #N2

PropertyTime

EST 2008



£595,000

Sole Agent: A fantastic three bedroom maisonette with private garden and own entrance, affording a sought after location with nice decor and interiors to match, behind its well maintained period facade, this superb home features stylish features with original empire wood floors, neutral colours and a modern fireplace.

The reception is south facing benefiting from plenty natural light while the master bedroom offers excellent space with a generously sized en-suite bathroom, there are two further bedrooms (a good size double plus a large single).

The property further benefits a fully fitted separate kitchen with direct access to the exceptionally large sunny rear garden with spacious decked area surrounded by unobstructed greenery and with side entrance.



1

3

2

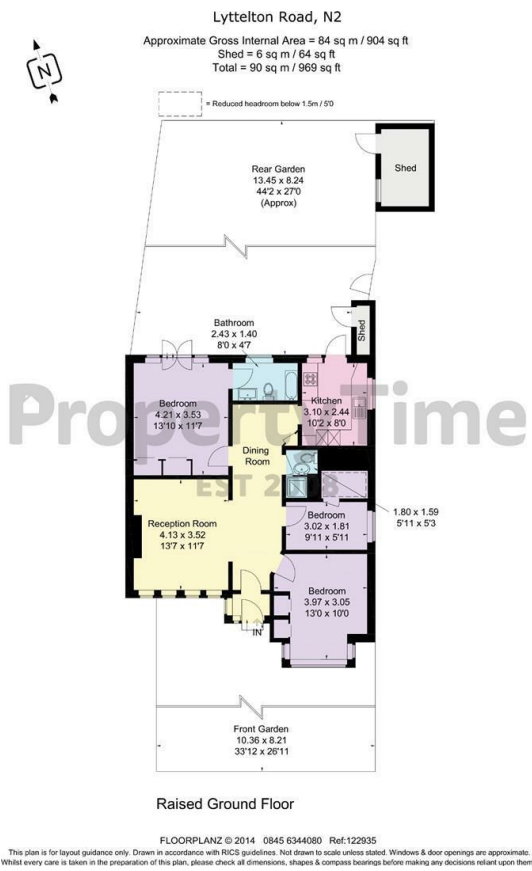
020 7794 2008 www.property-time.co.uk info@property-time.co.uk

None of the information within these details can be relied upon as being an actual representation of the property

- Reception
- 13'7" x 11'7" (4.14 x 3.53)
- Kitchen
- 10'2" x 8'0" (3.10 x 2.44)
- Bedroom 1
- 13'10" x 11'7" (4.22 x 3.53)
- Bedroom 2
- 13'0" x 10'0" (3.96 x 3.05)
- Bedroom 3
- 9'11" x 5'11" (3.02 x 1.80)
- Rear Garden
- 44'2" x 27'0" (13.46 x 8.23)

Area Map

Floor Plans



Energy Efficiency Graph

