



Southbourne Street, Salford

£850 PCM

Welcome to DiffRent homes at Moorlands Green. Moorland's Green is a new development of 60 new 2 and 3 bedroom homes, situated at the junction of Derby Road and Liverpool Street in Salford.

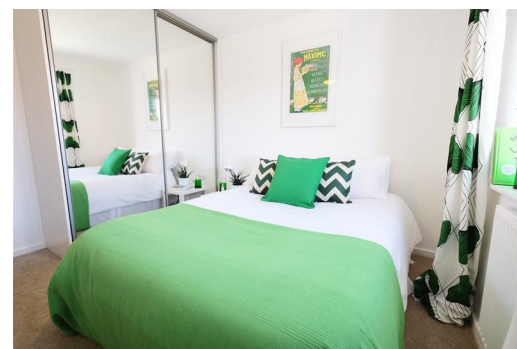
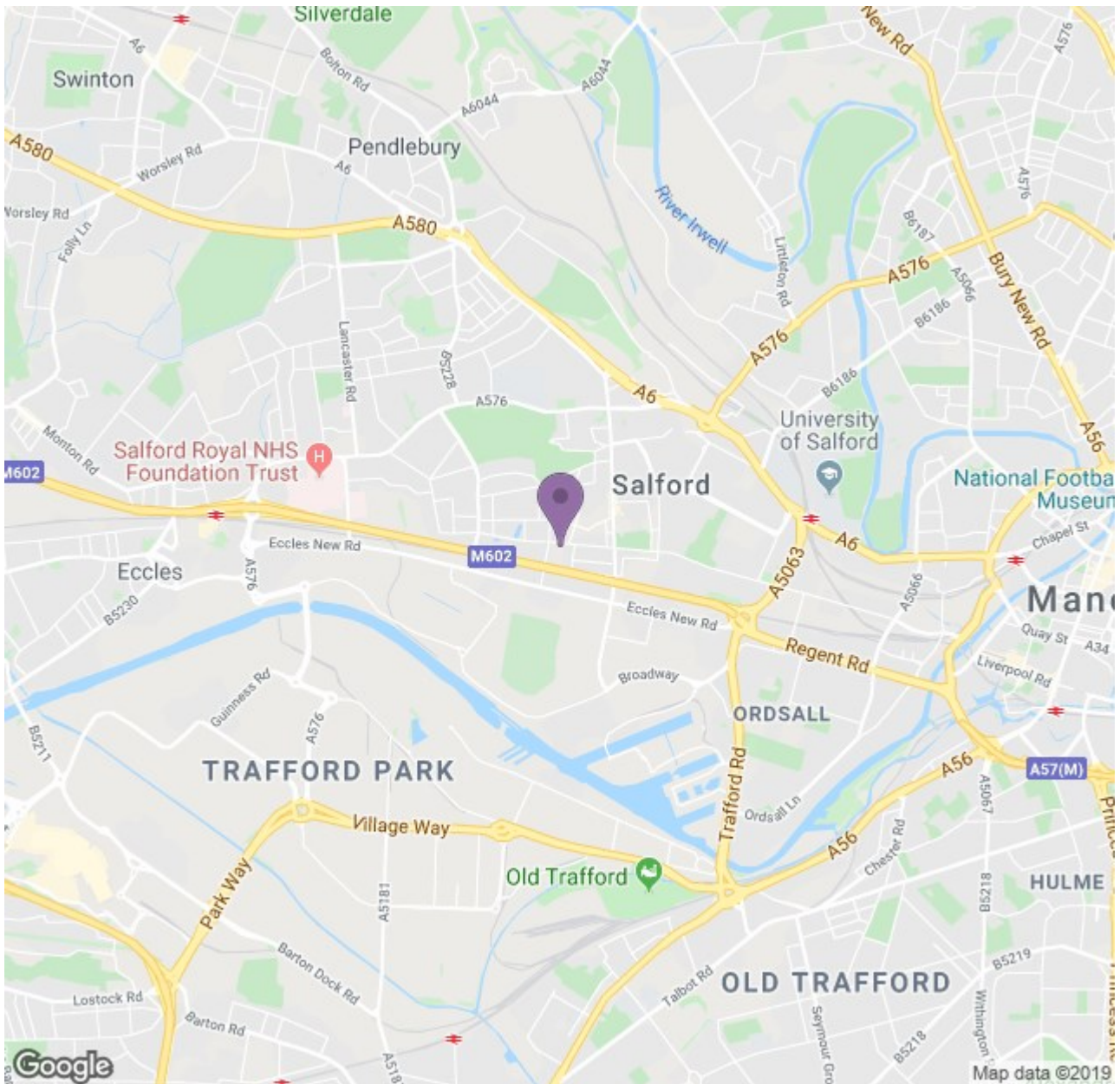
The Ellesmere has it all. On the ground floor, there's the spacious living room, and a contemporary open-plan kitchen and dining room with fantastic skylights, making this space ideal for entertaining or enjoying family time. Adding to the plentiful natural light, the French windows lead out into the private garden where you can get your friends round for al fresco dining and outdoor entertaining.

The downstairs WC is just off the hallway, then the stairs lead you up to the master bedroom, a double bedroom and single bedroom, and family sized bathroom. There's both upstairs and downstairs storage space too. This stunning energy-efficient home has beautiful flooring throughout and fitted alarm systems for your peace of mind. Great looking and thoroughly welcoming, everything in the Ellesmere has been designed and built to high standards.

Whilst this property is a new build property, it has been previously let. All properties are maintained and inspected once a tenant has moved out in order to keep the property to a high standard.

Images are demonstrative of this property type. The images are therefore not plot or site specific and spec may vary slightly. Properties are let unfurnished.





Energy Efficiency Rating		Environmental Impact (CO ₂) Rating	
Band	Score	Band	Score
A	92-100	A	35-47
B	81-91	B	28-34
C	69-80	C	22-27
D	55-68	D	16-21
E	41-54	E	10-15
F	29-40	F	7-9
G	1-28	G	1-6

England & Wales