



jordanfishwick

HAGUE BAR
New Mills, High Peak



**Ryversdale, Hague Bar, New Mills,
High Peak, Derbyshire SK22 3AT**
£1,300 Per calendar month



The Property

Far reaching views from an elevated position, this stunning detached home has to be viewed! Ideally positioned in Hague Bar close to New Mills railway station offering direct route to Manchester Piccadilly. Beautifully presented accommodation with upto four bedrooms, well stocked private gardens with multiple patio areas and a double garage. Comprising: entrance porch, living room with open fire, conservatory, dining room, re-fitted breakfast kitchen with island, utility room, wc, study/bedroom on the ground floor, master bedroom with en-suite, two further bedrooms and family bathroom. Available January and Un-furnished. Energy Rating Band D

Locality

Hague Bar is on the outskirts of the town of New Mills, which is set in an area of spectacular natural beauty. It stands above a rocky gorge known as The Torrs, where the River Sett meets the River Goyt. Surrounded by countryside and views to the hills, it is an idyllic place to live. The town centre offers a variety of shops, good schools, public houses, swimming pool and leisure facilities. There are two railway stations providing excellent transport links. Regular train services connect New Mills to Manchester Piccadilly in 30 minutes.

- Fabulous Far Reaching Views
- Deceptive Family Home with upto Four Bedrooms
- Superbly Presented Throughout
- Double Garage
- Three Reception Rooms
- Popular Location Just Outside New Mills
- Within 3/4 Mile of Railway Station

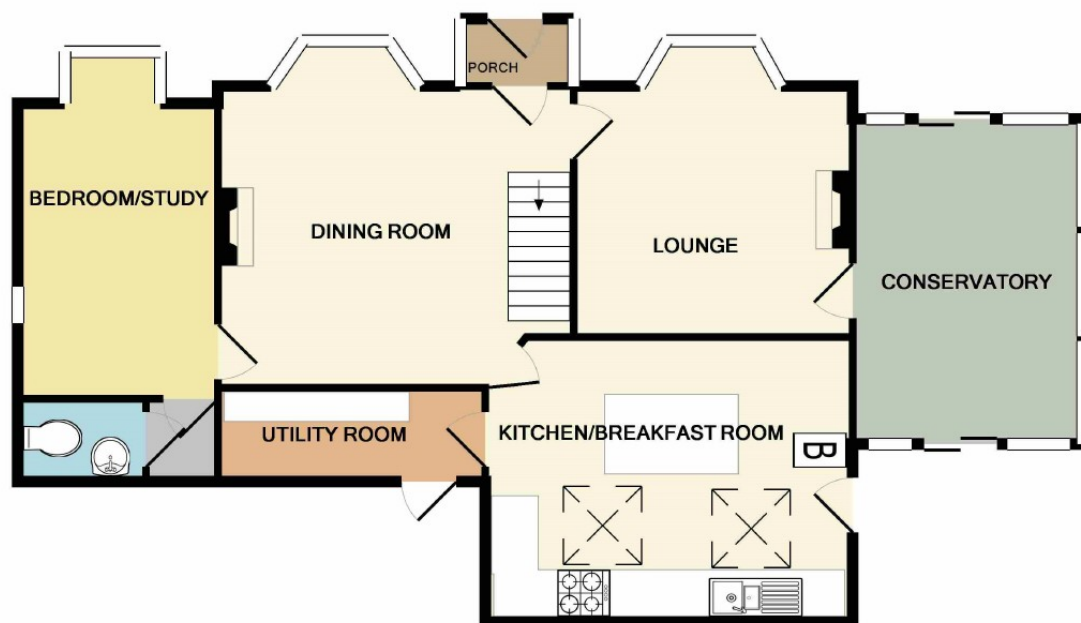
Postcode - SK22 3AT

EPC Rating - D

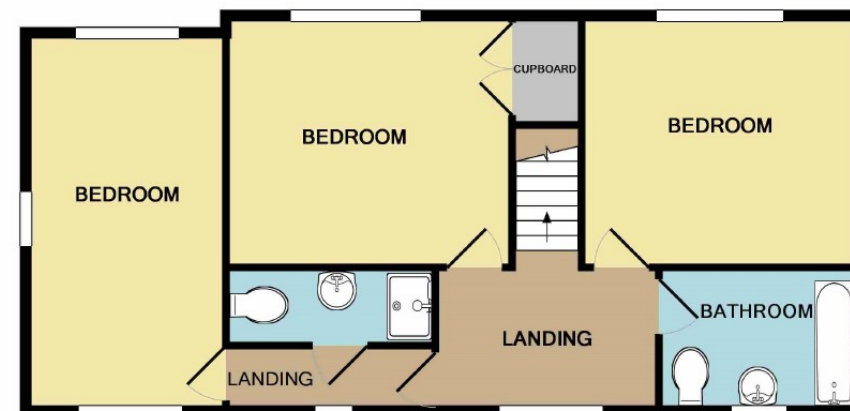
Local Authority - High Peak

Council Tax - Band E





GROUND FLOOR



1ST FLOOR

Whilst every attempt has been made to ensure the accuracy of the floor plan contained here, measurements of doors, windows, rooms and any other items are approximate and no responsibility is taken for any error, omission, or mis-statement. This plan is for illustrative purposes only and should be used as such by any prospective purchaser. The services, systems and appliances shown have not been tested and no guarantee as to their operability or efficiency can be given.
Made with Metropix ©2019



These particulars are believed to be accurate but they are not guaranteed and do not form a contract. Neither Jordan Fishwick nor the vendor or lessor accept any responsibility in respect of these particulars, which are not intended to be statements or representations of fact and any intending purchaser or lessee must satisfy himself by inspection or otherwise as to the correctness of each of the statements contained in these particulars. Any floorplans on this brochure are for illustrative purposes only and are not necessarily to scale.

Offices also at: Wilmslow, Macclesfield, Hale, Sale, Chorlton, Glossop, Manchester & Salford

14 Market Street, Disley, Cheshire, SK12 2AA

01663 76 78 78

disley@jordanfishwick.co.uk