



HISTORIC FAMILY HOME SET WITHIN IDYLIC RIVERSIDE GARDENS

LONG WHITE CLOUD

MONKEY ISLAND LANE, BRAY, BERKSHIRE SL6 2ED

Freehold

savills

Reception hall ♦ 4 reception rooms ♦ kitchen ♦ 5 bedrooms (2 en suite) ♦ family bathroom ♦ utility room ♦ cloakroom ♦ games room ♦ indoor swimming pool ♦ shower room ♦ pool equipment room ♦ cellar ♦ off-road parking ♦ gardens ♦ approximately 100 ft river frontage with mooring ♦ EPC rating =F

Historical note

The property started life as The Hut (now divided into two dwellings) and was often visited by the musicians Edward Elgar and Gabriel Faure, Siegfried Sassoon (the war poet) and George Bernard Shaw. In 1893, the property was owned by Miss Van de Weyer (a lady-in-waiting to Queen Victoria) and in the early 1900s, Frank Schuster took possession of the property. He invited Elgar to stay at the house, where he worked on composing his Violin Concerto and The Kingdom. (The house has been awarded a Blue Plaque commemorating Elgar's association with the property). Upon Schuster's death in 1927, The Hut was left to Anzy Wylde who was from New Zealand and renamed the house, Long White Cloud, being the translation of the Maori name for his country. The house was bought by the Moss family in the 1930s and it was here that the legendary racing driver, Stirling Moss, spent his childhood.

Description

Set within delightful riverside gardens, Long White Cloud is an individual family home with an interesting history. It enjoys an idyllic 'tucked away' location on a beautiful part of a quiet backwater of the River Thames and overlooks the renowned Monkey Island and its historic hotel. The house, faithful to its period, boasts elegant rooms with high ceilings and the many original features include leaded light windows and decorative fireplaces. The house is superbly positioned within its grounds to take full advantage of its idyllic setting and offers a rare opportunity for those seeking a home of immense character and charm.

The property offers approximately 4,840 sq. ft. of flexible and adaptable living space and the principle reception rooms, in addition to the indoor swimming pool, are arranged to provide excellent entertaining space. There are various reception areas including a spacious hall that creates a tranquil and welcoming impression upon entering the house, an impressive 32' drawing room that enjoys direct access to the rear sun terrace and a good size dining room. The country style kitchen is fitted with a comprehensive range of units, integral units and an Aga and benefits from a secondary entrance providing access to the gardens. Located off this wing of the house is a games room that may be accessed from either the kitchen or from the gardens and could be reinstated as a garage if required. The first floor is arranged to provide a master bedroom with an en suite bathroom, a guest bedroom with en suite bathroom, 3 further bedrooms and a split-level family bathroom.



Long White Cloud is approached via double wrought-iron gates opening onto a driveway and parking area to the front of the property. To the rear, and undoubtedly a key feature of the property, is the riverside garden that is enclosed by a variety of mature shrubs and trees to provide a high degree of seclusion and privacy. The beautifully tended garden is principally laid to lawn edged with well-stocked flower beds and enjoys about 100 ft. direct river frontage with mooring. Picket fencing runs along the river frontage to provide safety for young children. A raised sun terrace adjoining the house provides superb 'al fresco' dining/relaxation space and is a superb vantage point from which to enjoy the view.

Situation

Long White Cloud occupies an enviable 'tucked away' position in the village of Bray which boasts Michelin starred restaurants including the Fat Duck, Waterside Inn, Hinds Head and Caldesi in Campagna.

Maidenhead offers a wide range of shopping and leisure amenities, with further shopping and cultural amenities being available in Windsor. Rail access to London (Paddington) is available from Maidenhead and Crossrail, the new high speed service, is due to begin running around 2018. The M4 is easily accessible, leading to Heathrow Airport, Central London, the West Country and the M25.

Sporting facilities are varied, with golf and rugby at Maidenhead; horse racing at Windsor and Ascot; and boating on the River Thames and Bray Lake. In addition, there is a tennis court, cricket ground and club, gift shop and play area within the village.

Excellent schools in the area include the Ofsted Outstanding Oldfield School, Braywick Court Free School and Holyport College sponsored by Eton, plus independent schools including St. Pirans, Claires Court and Highfield Preparatory School.

Directions

Exit the M4 motorway (J8/9) and follow the signs for Maidenhead. At the Braywick roundabout, take the third exit signposted A308 Windsor and after about half a mile, turn left on the B3028 towards Bray. Follow the road, through the width restriction and turn right immediately before the single lane leading into the village centre. Proceed straight across at the junction into Old Mill Lane, follow the road and turn left immediately before the brideway (signposted to Monkey Island Hotel). Continue into the hotel car parking area and the entrance to Long White Cloud will be found on the right hand side.

Energy Performance A copy of the full Energy Performance Certificate is available upon request.

Viewing Strictly by appointment with Savills.

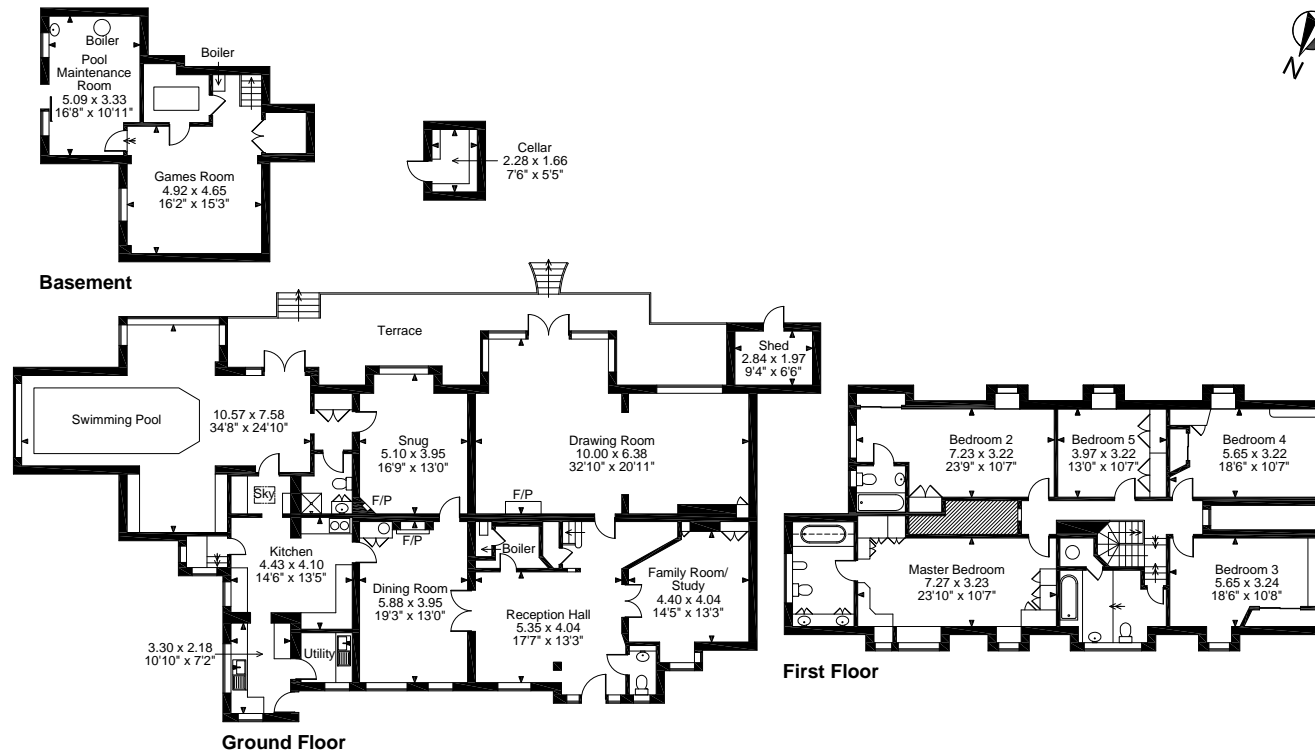


FLOORPLANS

Main House gross internal area: 4,840 sq ft, 450 sq m

Shed gross internal area: 60 sq ft, 6 sq m

Total gross internal area: 4,900 sq ft, 456 sq m



FOR ILLUSTRATIVE PURPOSES ONLY - NOT TO SCALE

The position & size of doors, windows, appliances and other features are approximate only.

□ Denotes restricted head height

© ehouse. Unauthorised reproduction prohibited. Drawing ref. dig/8206908/NJD

Savills Windsor
windsor@savills.com
01753 834 600

savills.co.uk

Important notice: Savills, their clients and any joint agents give notice that 1: They are not authorised to make or give any representations or warranties in relation to the property either here or elsewhere, either on their own behalf or on behalf of their client or otherwise. They assume no responsibility for any statement that may be made in these particulars. These particulars do not form part of any offer or contract and must not be relied upon as statements or representations of fact. 2: Any areas, measurements or distances are approximate. The text, photographs and plans are for guidance only and are not necessarily comprehensive. It should not be assumed that the property has all necessary planning, building regulation or other consents and Savills have not tested any services, equipment or facilities. Purchasers must satisfy themselves by inspection or otherwise.

