



BROOMHILL PROPERTY SHOP

Your one-hop, property shop



381 Crookesmoor Road, Crookesmoor, Sheffield, S10 1BD

RENT £86 pp/pw - All inclusive bills available upon request

Large house in the centre of Crookesmoor, only a short walk away from the University's Arts Tower and Information Commons.

Features: 7 large double bedrooms, Large modern kitchen, Communal lounge with leather sofas, Modern decor and furnishings, 2 bathrooms with an additional WC in the attic, Security alarm, Fully double glazed.

£602 Per Week

Available: 1st July 2020

- Security Alarm
- Permit Parking
- Center of Crookesmoor
- 7 Double Bedrooms
- 2 Bathrooms & extra W.C
- Spacious Lounge
- Fully Furnished
- Double Glazed
- RENT £86 pp/pw
- All inclusive bills available upon request All inclusive bills available upon request



T: 0114 266 6693 | E: admin@broomhillpropertyshop.co.uk | www.broomhillpropertyshop.co.uk



BROOMHILL PROPERTY SHOP

Your one-hop, property shop

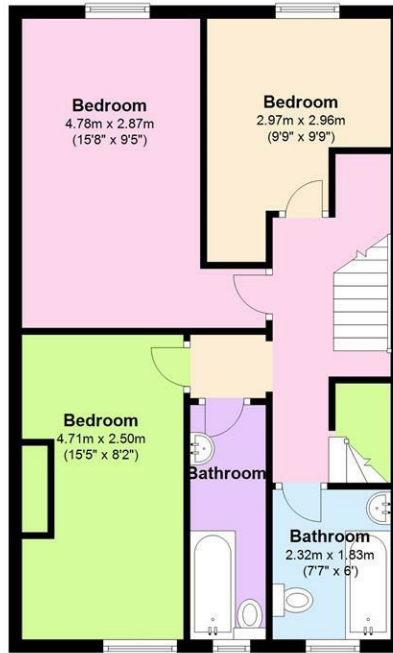
Ground Floor

Approx. 55.6 sq. metres (598.7 sq. feet)



First Floor

Approx. 55.1 sq. metres (593.2 sq. feet)



Second Floor

Approx. 34.1 sq. metres (367.5 sq. feet)



Total area: approx. 144.9 sq. metres (1559.5 sq. feet)

Energy Efficiency Rating		Current	Potential
Very energy efficient - lower running costs			
(92 plus) A			
(81-91) B			
(69-80) C			
(55-68) D			
(39-54) E			
(21-38) F			
(1-20) G			
Not energy efficient - higher running costs			
England & Wales		EU Directive 2002/91/EC	

Environmental Impact (CO ₂) Rating		Current	Potential
Very environmentally friendly - lower CO ₂ emissions			
(92 plus) A			
(81-91) B			
(69-80) C			
(55-68) D			
(39-54) E			
(21-38) F			
(1-20) G			
Not environmentally friendly - higher CO ₂ emissions			
England & Wales		EU Directive 2002/91/EC	



Broomhill Property Shop

138 Whitham Road, Sheffield, S10 2SR

T: 0114 266 6693 | F: 0114 266 0095 | E: admin@broomhillpropertyshop.co.uk

W: www.broomhillpropertyshop.co.uk