

**TO LET**



## **Bolwell Place, Melksham**

**2 Bedrooms, 1 Bathroom, Ground Floor Flat**

**£850 pcm**



  
**MARTIN&CO**



## Bolwell Place, Melksham

Ground Floor Flat,  
2 bedroom, 1 bathroom

£850 pcm

Date available: 11th May  
2024

Deposit: £980

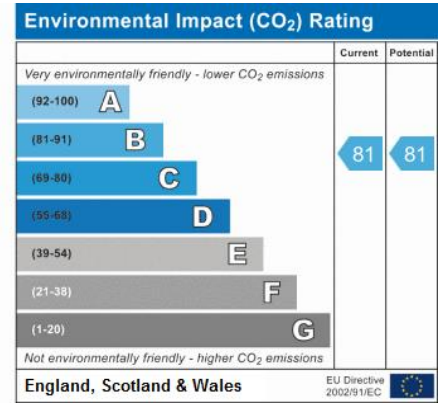
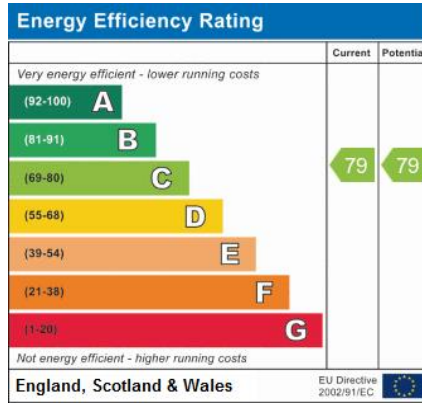
Holding Deposit: £195

Unfurnished

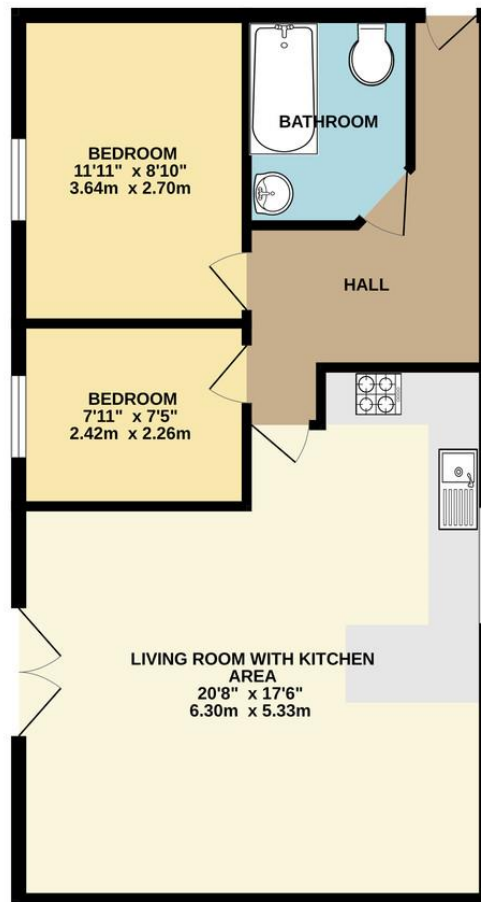
Council Tax band: A

- Modern two bedroom ground floor apartment
- Gas central heating and double glazing
- Open plan living room with fitted kitchen
- Bathroom with shower over bath
- Allocated parking for one car
- Close to town centre
- Professionally managed by Martin & Co.

A modern two bedroom ground floor apartment, in an excellent location close to the town centre and benefitting from a fitted kitchen with integral appliances as well as allocated parking.



GROUND FLOOR  
624 sq.ft. (57.9 sq.m.) approx.



TOTAL FLOOR AREA: 624 sq.ft. (57.9 sq.m.) approx.

Whilst every attempt has been made to ensure the accuracy of the floorplan contained here, measurements of doors, windows, rooms and any other items are approximate and no responsibility is taken for any error, omission or mis-statement. This plan is for illustrative purposes only and should be used as such by the prospective purchaser. The services, systems and appliances shown have not been tested and no as to their operability or efficiency can be given.

MARTIN & CO

## Martin & Co Westbury

7 Palomino Place • Westbury • Wiltshire • BA13 3SD  
T: 01373 866686 • E: westbury@martinco.com

01373 866686

<http://www.martinco.com>

**Accuracy:** References to the Tenure of a Property are based on information supplied by the Seller. The Agent has not had sight of the title documents. A Buyer is advised to obtain verification from their Solicitor. Items shown in photographs including but not limited to carpets, fixtures and fittings are not included unless specifically mentioned within the sales particulars. They may however be available by separate negotiation. Buyers must check the availability of any property and make an appointment to view before embarking on any journey to see a property. No person in the employment of the agent has any authority to make any representation about the property, and accordingly any information given is entirely without responsibility on the part of the agents, sellers(s) or lessors(s). Any property particulars are not an offer or contract, nor form part of one. **Sonic / Laser Tape:** Measurements taken using a sonic / laser tape measure may be subject to a small margin of error. **All Measurements:** All Measurements are Approximate. **Services Not tested:** The Agent has not tested any apparatus, equipment, fixtures and fittings or services and so cannot verify that they are in working order or fit for the purpose. A Buyer is advised to obtain verification from their Solicitor or Surveyor.