



David
Astburys



- 1074 square Foot
- Communal Gardens
- Great Storage
- Two Bathrooms
- Eat In Kitchen Diner
- Large Reception Room

South Square, Hampstead Garden Suburb NW11

£819,995

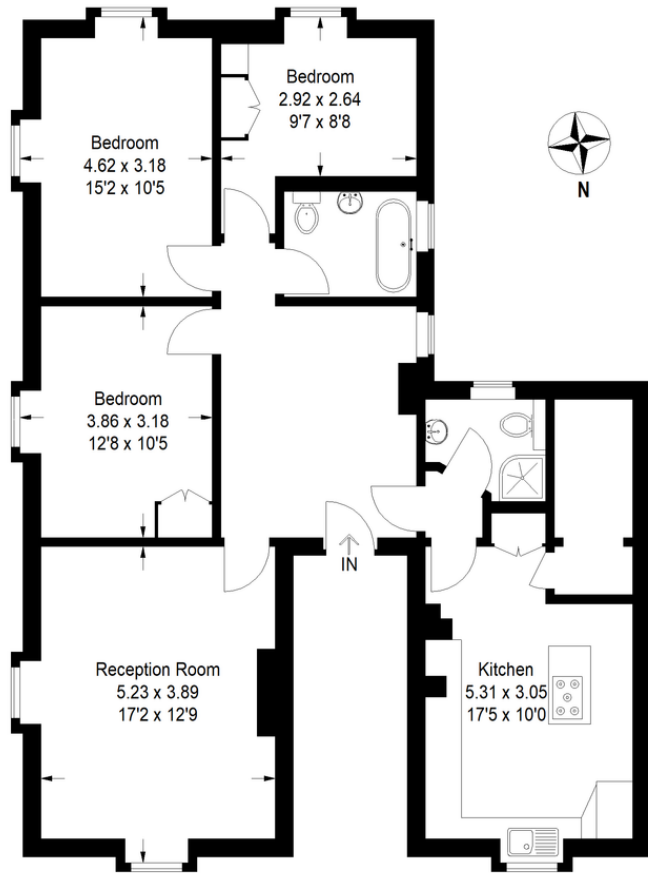
A rarely available 1074 square foot three-bedroom apartment situated on the third floor (top) of this Grade II* listed block built in the centre of Hampstead Garden Suburb.

The block boasts stunning landscaped communal gardens and only a 0.5 mile walk to Golders Green Station (Northern Line).

The flat offers a vast amount of living space with a large reception room, eat in kitchen and great storage throughout. It also is flooded with natural light and boasts views over the communal gardens to the rear and the church to the front.

South Square, NW11

Approximate Gross Internal Area
99.8 sq m / 1074 sq ft



Second Floor

Measured in accordance with RICS Code of Measuring Practice. To be used for identification and guidance purposes only.
Whilst every care is taken in the preparation of this plan, please check all dimensions, shapes and compass bearings before making any decisions reliant upon them.
www.eiljahk.co.uk © 2019 info@eiljahk.co.uk



15 Park Road, Crouch End,
London, N8 8TE

<http://www.davidastburys.com>
0203 000 6787
crouchend@davidastburys.com

Agents Note: Whilst every care has been taken to prepare these sales particulars, they are for guidance purposes only. All measurements are approximate and for general guidance purposes only and whilst every care has been taken to ensure their accuracy, they should not be relied upon and potential buyers are advised to recheck the measurements.