



Nailers Court, Ednall Lane, Bromsgrove, B60 2DA | Offers In Excess Of £80,000  
One Bedroom Retirement Apartment



**Features:**

- Double Bedroom
- Bathroom
- Lounge and Kitchen
- Communal Lounge, Gardens and Laundry Room
- Weekly Activities
- No Upward Chain

**Summary:**

A well presented one bedroom retirement apartment, for the 60 years and over, offered with no upward chain, a lounge, separate kitchen and bathroom, south-facing with a view to the gardens at the rear of the development. In addition, Nailers Court benefits from having non-resident management staff, Careline alarm service and a number of facilities and weekly social activities, situated in Bromsgrove town centre.

**Description:**

The accommodation, in brief, features:- Hall with Good Sized Store Cupboard, Lounge, Kitchen with Integrated Oven, Hob and Extractor, Master Bedroom with Built In Wardrobe, and Bathroom.

Nailers Court offers a number of facilities including; non-resident management staff, Careline alarm service, lift, communal lounge, laundry room and guest facilities. In addition, there are also weekly social activities including; coffee mornings and quiz afternoons.

**Outside:**

Outside, the property benefits from having attractive communal gardens with paved patio, lawns and an array of plants, shrubs and trees.

**Location:**

The property is conveniently located within easy distance from the Artrix Art and Entertainment Centre, the new leisure centre and to the town centre offering a range of eateries, supermarkets as well as doctors, dentists, Health Centre and professional services. In addition, there is easy access to the motorway network (M5 and M42).

**Charges:**

Ground rent - £385 p.a.

Service charge - £2,080 p.a.





## Room Dimensions:

### Hall

### Lounge:

16' 10" x 10' 7" (5.15m x 3.25m)

### Kitchen:

7' 4" x 5' 3" (2.25m x 1.62m)

### Bedroom:

12' 1" x 8' 9" (3.70m x 2.68m)

### Bathroom:

6' 8" x 5' 4" (2.05m x 1.65m)



EPC: C

Council Tax Band: C

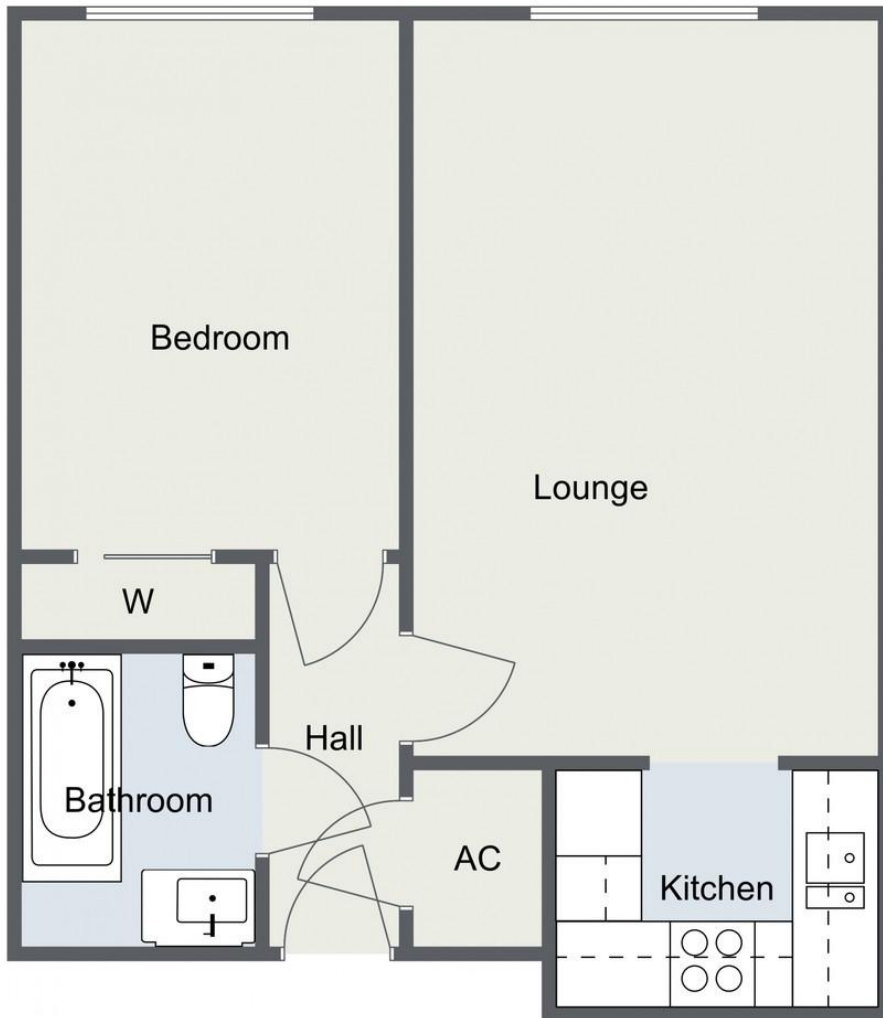
Tenure: Leasehold

For more information on Ednall Lane or to arrange a viewing, please call the Bromsgrove Office on 01527 872 479





Nailors Court, Bromsgrove  
Apartment

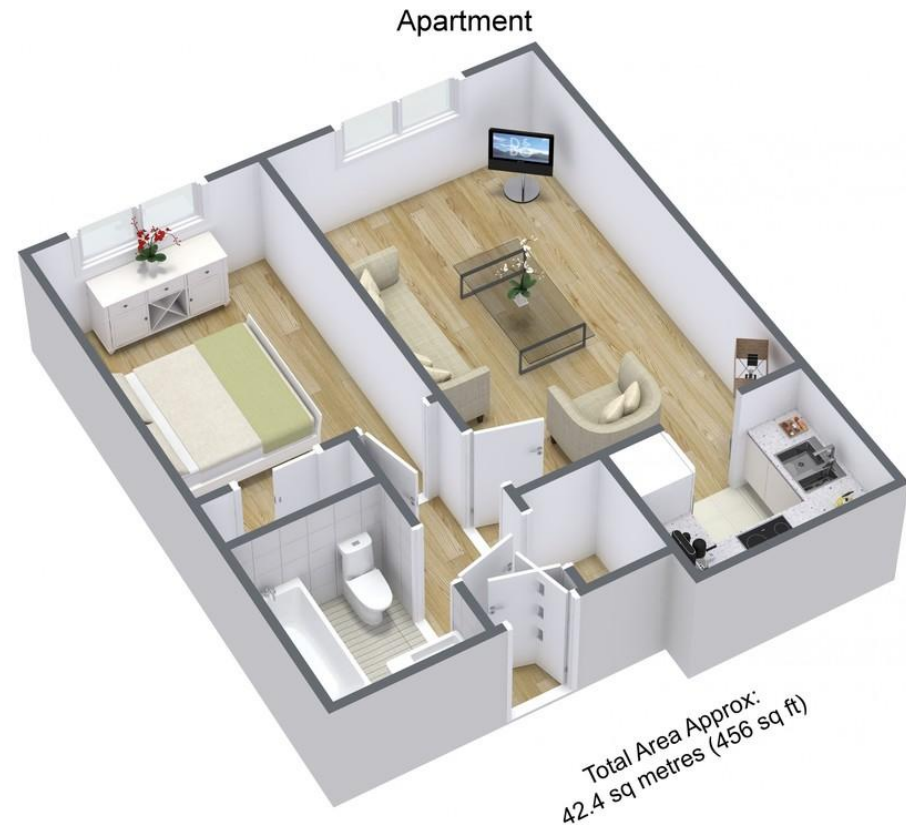


Total Area Approx:  
42.4 sq metres (456 sq ft)

For illustrative purposes only. Decorative finishes, fixtures & fittings do not represent the current state of the property. Measurements are approximate & not to scale. Floor Plans made using RoomSketcher.

*Please read the following: These particulars are for general guidance only and are based on information supplied and approved by the seller. Complete accuracy cannot be guaranteed and may be subject to errors and/or omissions. They do not constitute a contract or part of a contract in any way. We are not surveyors or conveyancing experts therefore we cannot and do not comment on the condition, issues relating to title or other legal issues that may affect this property. Interested parties should employ their own professionals to make enquiries before carrying out any transactional decisions. Photographs are provided for illustrative purposes only and the items shown in these are not necessarily included in the sale, unless specifically stated. The mention of any fixtures, fittings and/or appliances does not imply that they are in full efficient working order and they have not been tested. All dimensions are approximate. We are not liable for any loss arising from the use of these details.*

Nailors Court, Bromsgrove



Total Area Approx:  
42.4 sq metres (456 sq ft)

For illustrative purposes only. Decorative finishes, fixtures & fittings do not represent the current state of the property. Measurements are approximate & not to scale. Floor Plans made using RoomSketcher.