





- Four Bedrooms
- Master En-Suite
- Allocated Parking
- Over Three Floors
- Ground Floor WC
- Viewing Recommended





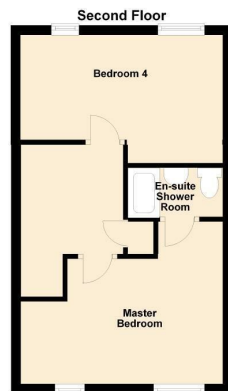
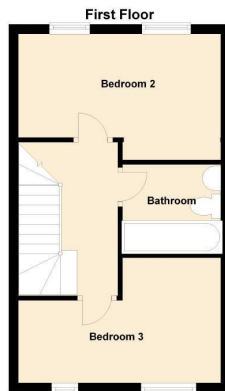
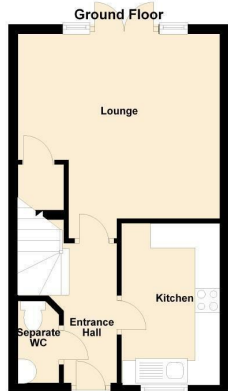
This spacious four bedroom three storey townhouse is situated in the popular area of North Shields. Situated in a convenient location with easy access to all local amenities, schools and Metro/bus links.

The property briefly comprises to the ground floor:- entrance hallway, spacious lounge with French doors out to the rear garden and a kitchen with fitted wall and floor units and integrated oven and hob. To the first floor there are bedrooms two and three and a family bathroom WC with shower over the bath. To the second floor there is the master bedroom with en-suite shower room and the fourth bedroom.

Externally there is a communal lawned area to the front and a private garden to the rear with a patio and lawned areas. There is also an allocated parking space.

Inspection is highly recommended on this ideal spacious family home. For more information and to book your viewing please call our Whitley Bay sales team.



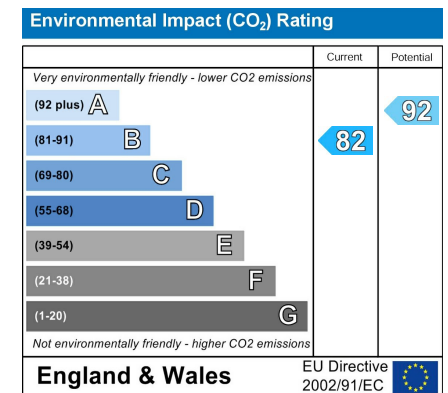
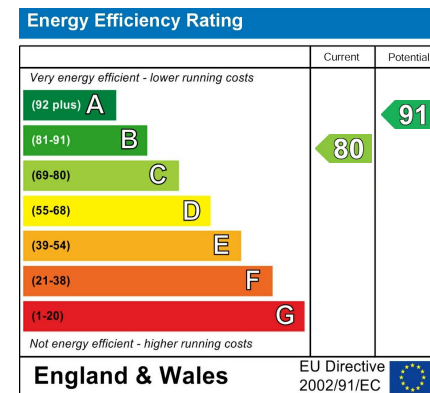


Lounge 13'8" x 13'6" (4.17 x 4.12)

Kitchen 10'9" x 6'7" (3.28 x 2.01)

Master Bedroom 13'5" x 11'11" (4.10 x 3.64)

Bedroom Two 13'5" x 9'1" (4.11 x 2.79)



The difference between house and home

You may download, store and use the material for your own personal use and research. You may not republish, retransmit, redistribute or otherwise make the material available to any party or make the same available on any website, online service or bulletin board of your own or of any other party or make the same available in hard copy or in any other media without the website owner's express prior written consent. The website owner's copyright must remain on all reproductions of material taken from this website.

Gosforth 0191 236 2070
 Newcastle 0191 284 4050
 Forest Hall 0191 605 3134
 High Heaton 0191 270 1122
 Low Fell 0191 487 0800
 Tynemouth 0191 257 2000
 Whitley Bay 0191 251 3000
 Property Management Centre 0191 236 2680



www.janforsterestates.com

