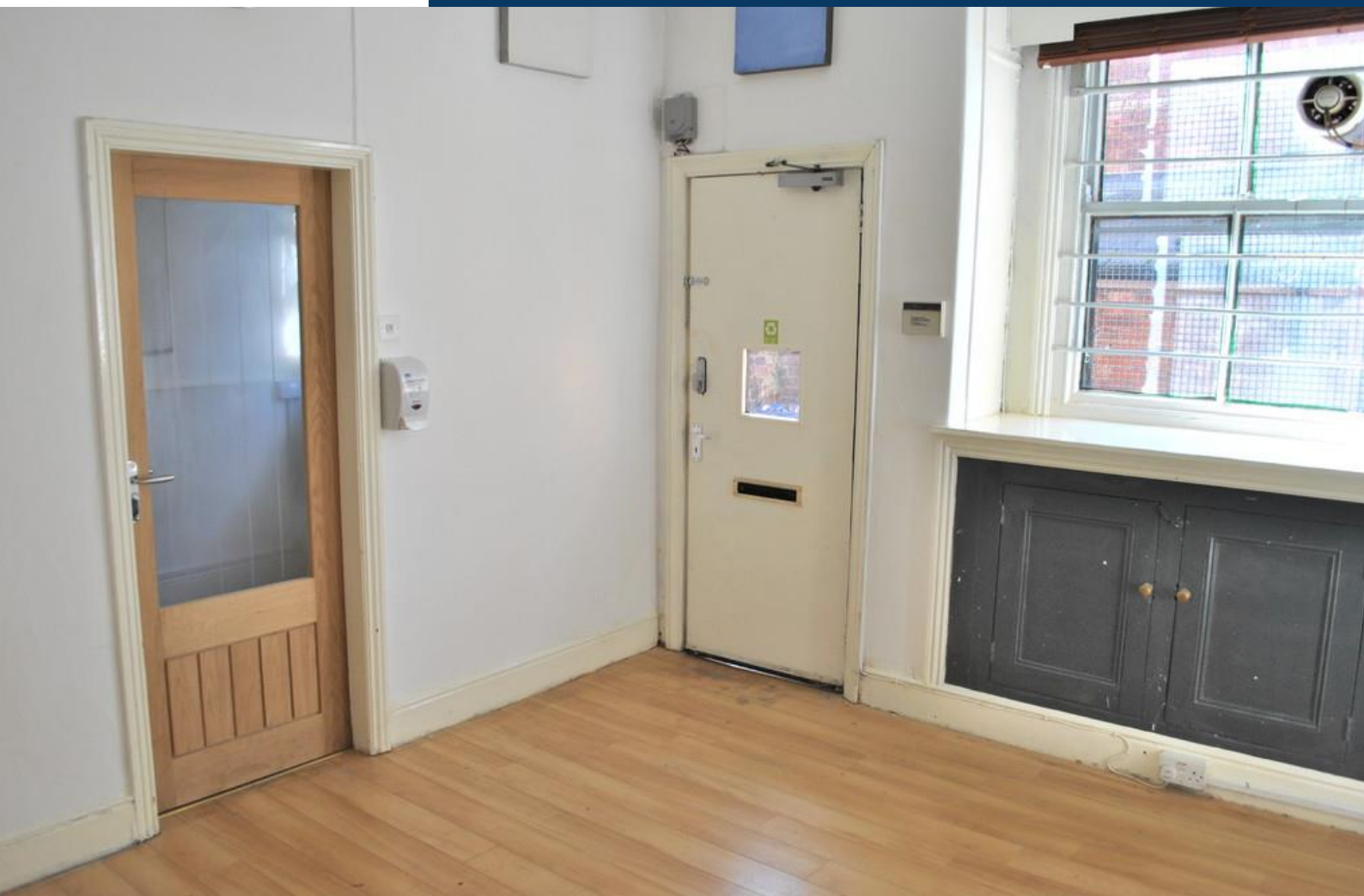




Jets

PALATINE ROAD, MANCHESTER, M22 4JS
RENT £500 PER MONTH





Location

The property is located on Palatine Road in Northenden.

Description

Self-contained office based in the Centre of Northenden Village at 235 sq ft. This office has two rooms, storage cupboards, kitchen area, and separate W.C. with wash basin. Parking space is available, secure shutters to the property and alarm. Available Now at just £500 per month.

Accommodation

The property is accessed via a side entrance that enjoys the addition of an electric roller shutter for that extra security. Externally there is off-road parking for one car.

Main Office

3.342 x 3.868 max (10'11" x 12'8" max)

A good size room that is light and bright. There is a window to the side of the front door with storage underneath as well as a separate large full height storage cupboard. The room also comes with a telephone land line and, we are advised, a fast broadband connection along with ample power sockets. A door leads through to the second office/kitchen area.



Room 2

3.898 x 2.077 max (12'9" x 6'9" max)

The rear room, which can be used as a second office, comes with a base level kitchen unit with storage below and incorporating a sink, together with a door which provides access to a wc with wash basin.

Services

The property is connected to electricity and water.

Terms

Ideally a term of 3 years with a deposit of £1,500 (3 months equivalent)

Rates

The rateable value is £3,100 with rates payable of less than £1,550 pa. However the property qualifies for small business rates relief and should be exempt from business rates (subject to terms and conditions) Contact Manchester Council for full details.