

42 Bramingham Road, Luton, LU3 2SW

Guide Price £280,000

A fantastic family home offered to the market with no upper chain.

Presented in Superb condition throughout, Benjamin Stevens are pleased to offer this three bedroom semi detached home.

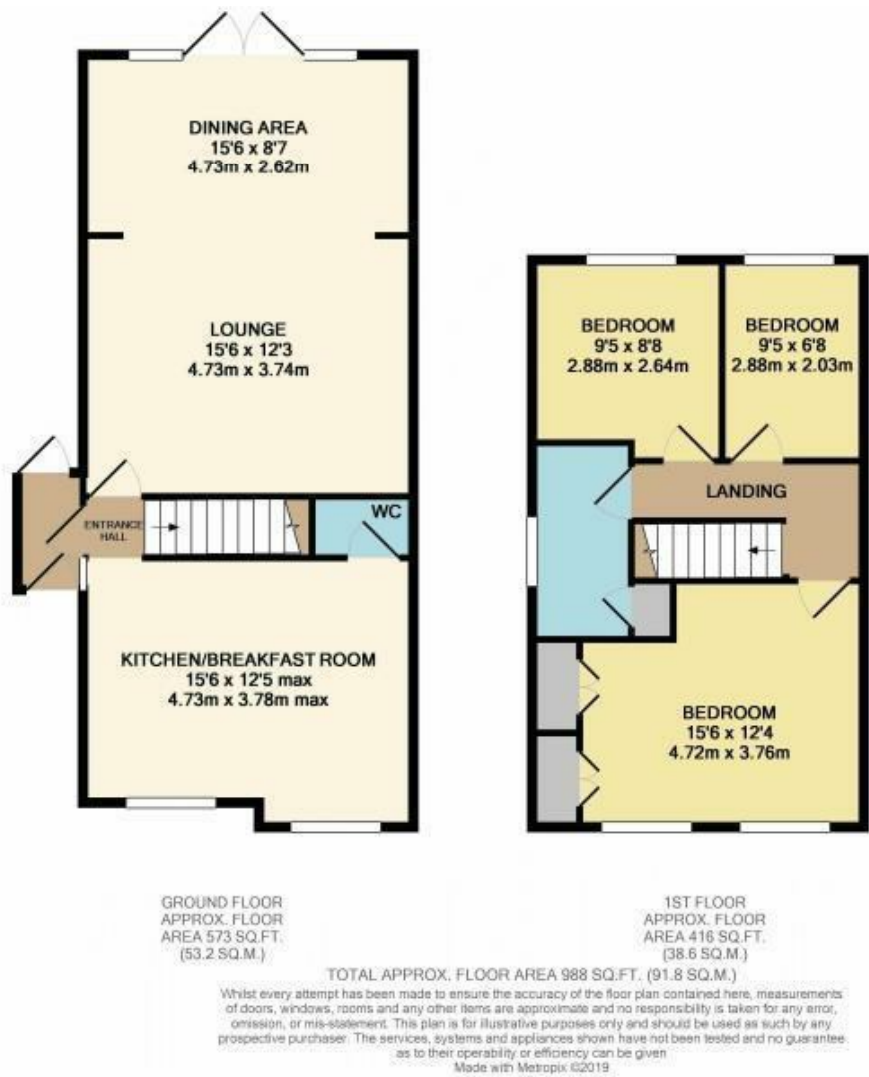
Downstairs comprises of; entrance porch with door leading off to the rear garden and double doors opening up to the kitchen / breakfast area which has been extended from the garage conversion. An area ideal for hosting family events or parties, the kitchen also offers integral hob/oven and microwave, with a converted understairs cupboard offering a downstairs W.C.

Through to your large open plan lounge diner with eye catching solid wooden flooring throughout. First floor offers a master bedroom with built in wardrobes, two further bedrooms and a modern suite family bathroom.

To the front, Block paved driveway offering parking for four plus vehicles and a large rear garden with shed access at the bottom.

The property is located a short walk away from legrave train station, good schools, local parks and other local amenities.

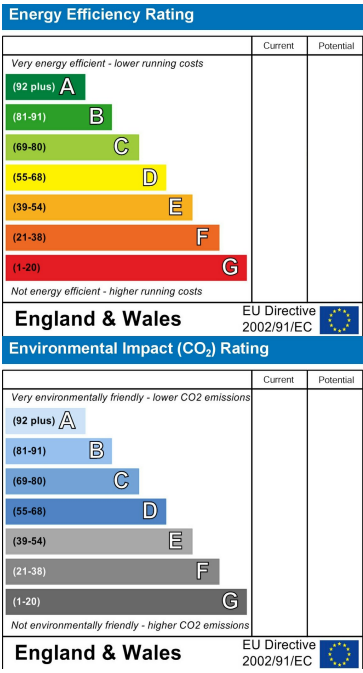
Floor Plan



Area Map



Energy Efficiency Graph



These particulars, whilst believed to be accurate are set out as a general outline only for guidance and do not constitute any part of an offer or contract. Intending purchasers should not rely on them as statements of representation of fact, but must satisfy themselves by inspection or otherwise as to their accuracy. No person in this firms employment has the authority to make or give any representation or warranty in respect of the property.

