

Ibbett Mosely



385 Watringbury Road, East Malling, Kent, ME19 6JG
£175,000



...a name you can trust
offices in Kent and London



385 Watringbury Road, East Malling, Kent, ME19 6JG

SPACIOUS TWO BEDROOM LODGE LOCATED IN A QUIET TUCKED AWAY POSITION ON THE EXCLUSIVE HILLBERRY PARK DEVELOPMENT FOR THE OVER 50's WITH A FULLY ENCLOSED WRAP AROUND GARDEN AND ALLOCATED PARKING.

- Lodge Home With Decking
- Over 50's
- Master Bedroom with Dressing Area
- Stunning Open Plan Living/Dining/Kitchen
- Separate Utility Room
- En Suite Shower Room
- Enclosed Courtyard Style Garden
- Overlooking Woodland to Rear
- Allocated Parking

Fantastic opportunity to acquire a beautifully designed lodge home offering spacious living accommodation with two double bedrooms, master with en suite shower room, family bathroom, and a good sized utility room. Designed for practical living with the appeal of Scandi-style, the living area has white washed vaulted ceilings and fully glazed front elevation and high level windows creating a wonderfully bright and inviting space. Outside the wrap around garden is fully enclosed with mature laurels and fencing, with a paved patio and area of lawn. Pets allowed.

ENTRANCE

Pathway with landscaped borders leading to steps to front door. Obscured glass door to entrance hall.

ENTRANCE HALL

Storage coat cupboard, wood style flooring, covered radiator, fitted bookcase, access to part boarded loft.

OPEN PLAN LIVING/DINING/KITCHEN

Vaulted ceiling. Covered radiators, feature

fireplace with electric wood burner effect fire, full height windows to side and front, open to kitchen dining area. Range of wall and floor units with contrasting work surfaces and tiled splash back, integrated fridge freezer, wall mounted ovens and microwave, wine fridge, four ring gas hob and extractor hood, 1 1/2 sink and drainer unit with mixer tap.

UTILITY ROOM

Range of wall and floor units with contrasting work surfaces, pantry cupboard, space and plumbing for machine and tumble dryer, cupboard housing boiler, radiator, part tiled walls, wood style flooring.

BEDROOM ONE

Range of built in bedroom furniture, radiator, inset ceiling spotlights, dressing area leading to en suite shower room.

EN SUITE SHOWER ROOM

Corner shower cubicle with Mira waterfall shower and separate shower attachment, WC, sink in vanity unit with built in mirror, chrome ladder style radiator, fully tiled walls, tiled floor,



inset ceiling spotlights, extractor fan, obscured glass window to side.

BEDROOM TWO

Range of built in bedroom furniture, inset ceiling spotlights, radiator, window to side.

BATHROOM

Bath with handrails, sink in vanity unit with fitted mirror, WC, chrome ladder style radiator, radiator, extractor fan, fully tiled walls, tiled floor.

OUTSIDE SPACE

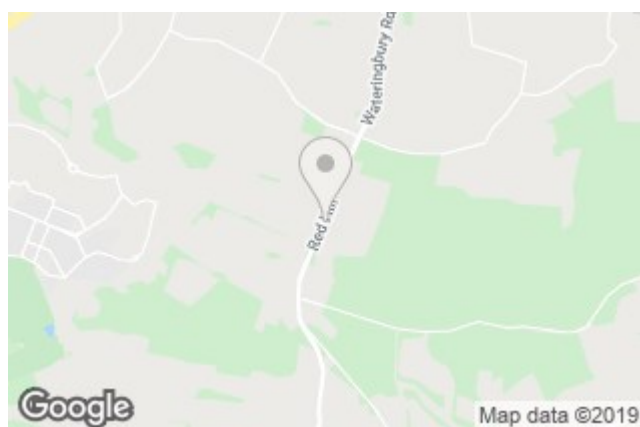
Wraparound decking to front, fully enclosed and landscaped courtyard style garden (south facing), storage shed, water butt, rear access gate to public footpath leading to woodlands and orchards.

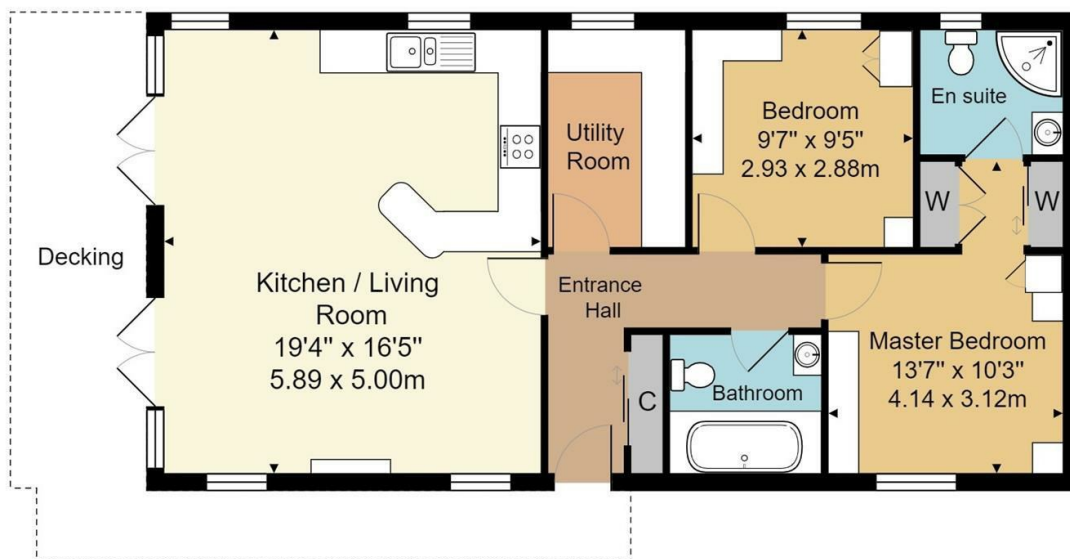
PARKING

One allocated parking space.

AGENTS NOTES

The vendor of this property is an employee of Ibbett Mosely Surveyors LLP





Approx. Gross Internal Area 758 ft² ... 70.4 m²

Whilst every attempt has been made to ensure the accuracy of the floor plan contained here, measurements of doors, windows, rooms and any other items are approximate and no responsibility is taken for any error, omission, or mis-statement. This plan is for illustrative purposes only and should be used as such by any prospective purchaser or tenant. The services, systems and appliances shown have not been tested and no guarantee as to their operability or efficiency can be given.

Ibbett Mosely

Offices at • BOROUGH GREEN • OTFORD • SEVENOAKS • SOUTHWARK
TONBRIDGE • WESTMINSTER • WESTERHAM • WEST MALLING

www.ibbettmosely.co.uk

West Malling 01732 842668

IMPORTANT - Ibbett Mosely, for themselves and for the vendors or lessors of this property whose agents they are give notice that (i) these particulars are set out as a general outline only for guidance of intending purchasers or lessors, and do not constitute, nor constitute part of an offer or contract, (ii) all descriptions, dimensions references to condition and necessary permission for use and occupation, and other details are given without responsibility and any intending purchasers or tenants, should not rely on them as statements or representations of fact but must satisfy themselves by inspection or otherwise as to the correctness of each item, (iii) no person in the employment of Ibbett Mosely, has any authority to make or give representation of warranty whatsoever in relation to this property ver 3.0

...a name you can trust
offices in Kent and London