



MILES ESTATE AGENTS

**89 Graham Way Cotford St. Luke
Taunton TA4 1JG**



A well presented modern 4 bedroom link detached house with refitted kitchen, bathroom and en suite in this popular village location. Enclosed garden, double garage and off road parking for 4 cars - early viewing highly recommended.

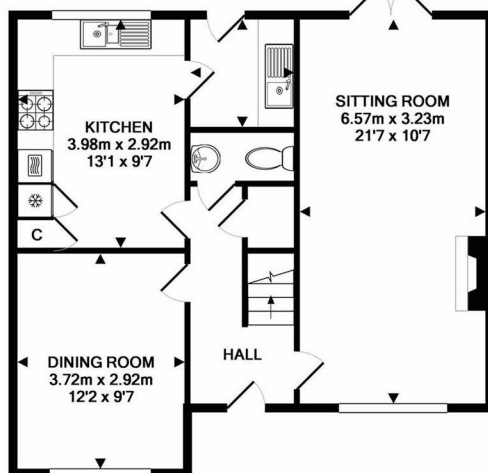




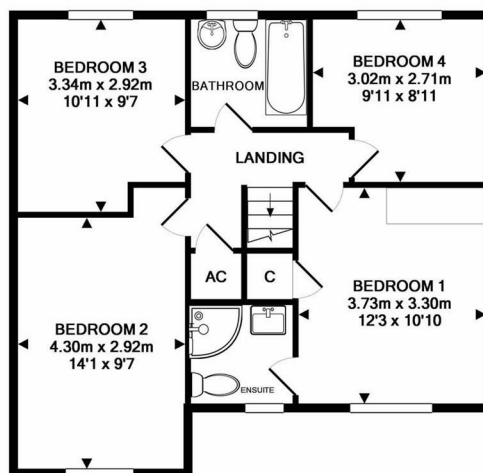
Features:

- Entrance Hall
- Spacious Living Room
- Separate Dining Room
- Lovely Refitted Kitchen/Breakfast Room
- Utility & Refitted Cloakroom
- 4 Good Size Bedrooms
- Master with Refitted En Suite
- Refitted Bathroom
- Enclosed Garden
- Double Garage
- Off Road Parking for 4 Cars
- Council Tax Band E





GROUND FLOOR
APPROX. FLOOR
AREA 55.6 SQ.M.
(599 SQ.FT.)



1ST FLOOR
APPROX. FLOOR
AREA 55.6 SQ.M.
(599 SQ.FT.)

TOTAL APPROX. FLOOR AREA 111.2 SQ.M. (1197 SQ.FT.)
Made with Metropix ©2019



Viewings strictly through the selling agents:

Miles Estate Agents

2 Piffin Lane, Bishops Lydeard, Taunton,
Somerset, TA4 3AS

Tel: 01823 470 500

lydeard@milesestateagents.co.uk

www.milesestateagents.co.uk

rightmove

Zoopla.co.uk

onTheMarket.com

MILES ESTATE AGENTS

