



1,102
sq ft



3



2



1

REDBRIK
ESTATE AGENTS 

Helping you find
your home at...

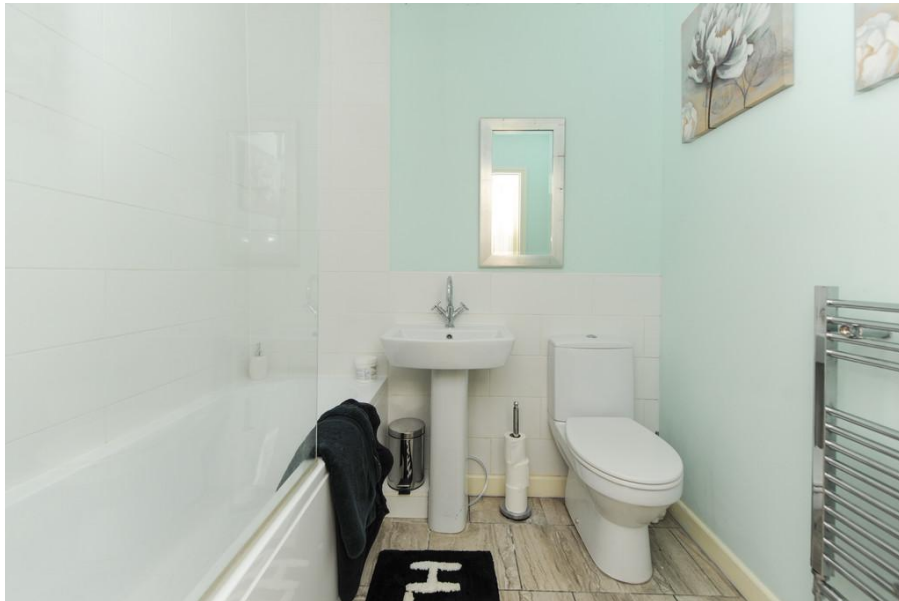
Colton Close, Chesterfield
Guide Price £230,000 to £240,000

£230,000 to £240,000 (Guide Price) Located on a quiet cul-de-sac in the popular suburb of Dunston is this beautifully presented and superbly styled three bedroom semi-detached bungalow.

- Three Bedroom Semi Detached House
- Modern Fitted Kitchen/diner With Integrated Cooking Appliances
- Spacious Lounge
- uPVC Conservatory Overlooking The Rear Garden
- Master Bedroom With En-Suite & Dressing Room
- Modern Fitted Bathroom With White Suite
- Enclosed Rear Garden With Lawn & Patio
- Off Street parking For Numerous Cars & Double Garage With Electric Doors
- GCH & uPVC Double Glazing
- energy Rating - D - Freehold.

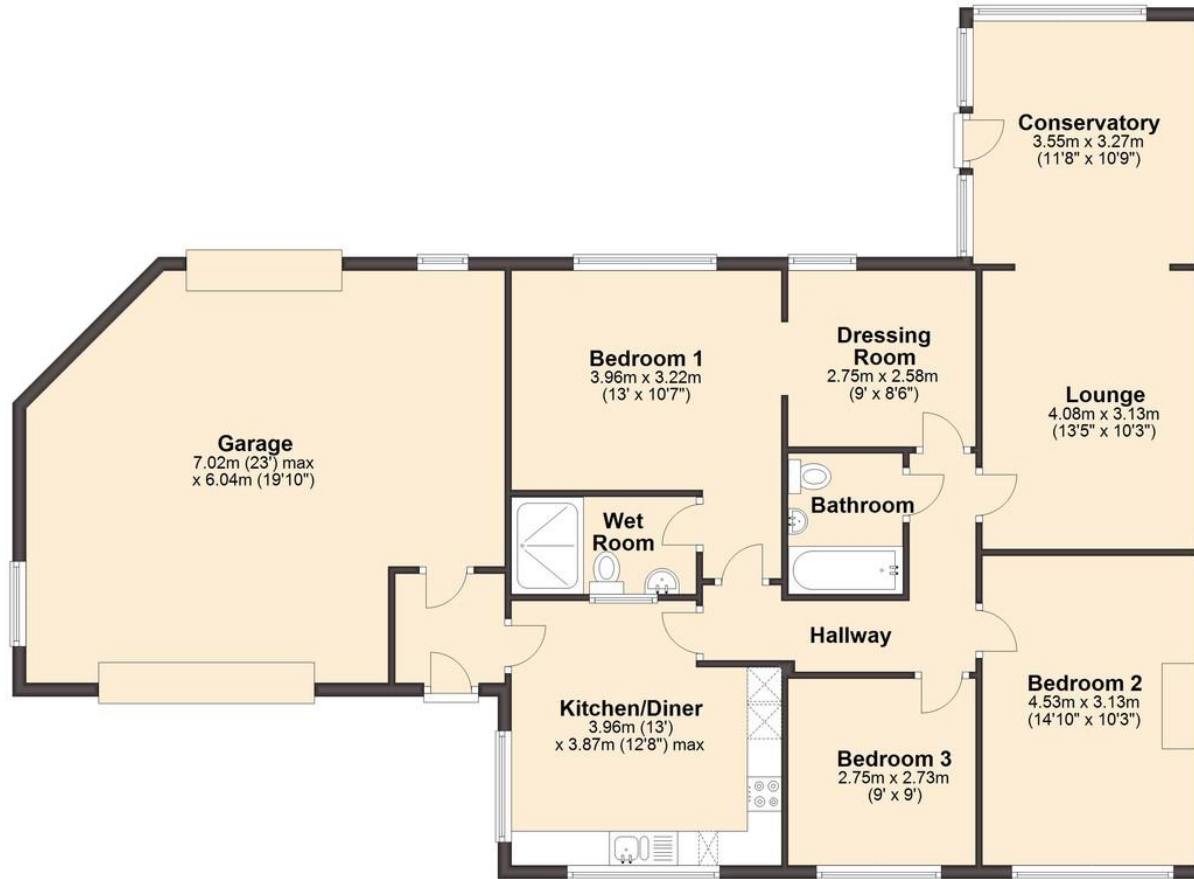
Occupying a corner plot this deceptively spacious property offers in excess of 1100 sq. ft of flexible accommodation, private enclosed rear garden and ample off street parking with double garage. Ideally placed a short distance from schools, shops, parks, nus services and transport links including commuter routes.





Ground Floor
Approx. 102.4 sq. metres (1102.1 sq. feet)

We endeavour to make these particulars as accurate as possible, but they should only be used as guidance and they do not constitute any part of the contract. All measurements are approximate and no guarantees are made to the services, heating systems, appliances (if any) or fittings as to their working order and no warranty can be given or implied.



Total area: approx. 102.4 sq. metres (1102.1 sq. feet)

You may download, store and use this material for your own personal use and research. You may not republish, retransmit, redistribute or otherwise make the material available to any party or make the same available on any website, on or off line service or hard copy without the website owner's express written consent. The website owner's copyright must remain on all reproductions of material taken from this website.

