



P U T T E R I L L S

est. 1992

St. Stephens Close, St. Albans, AL3 4AB  
Offers in excess of £950,000



Packed full of potential is this stunning 1930's three bedroom detached family home located at the end of a pretty and sought after cul-de-sac.

An exciting and rare opportunity to purchase a three double bedroom bay fronted 1930's detached house in a sought after residential cul-de-sac. The property has been well maintained throughout and offers scope to extend subject to the necessary planning consents to create a larger family home. Located on the southern side of the City centre, it is conveniently positioned to provide easy access to both the M1 & M25 motorway networks, with St Albans centre just a short drive away. This property should be viewed to truly appreciate the potential.

To view please call the team on 01727 225858









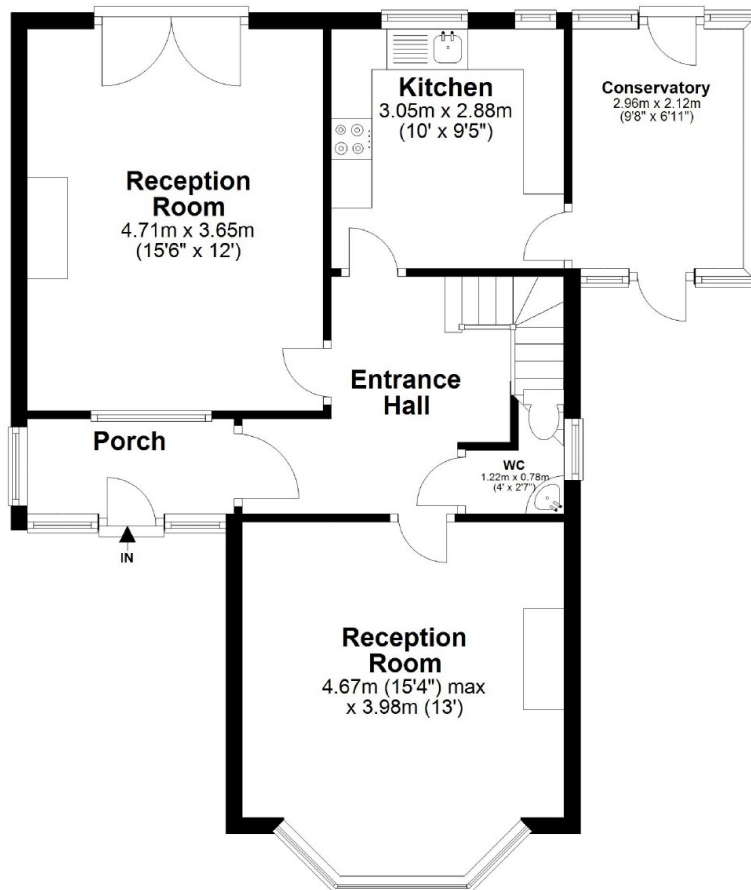






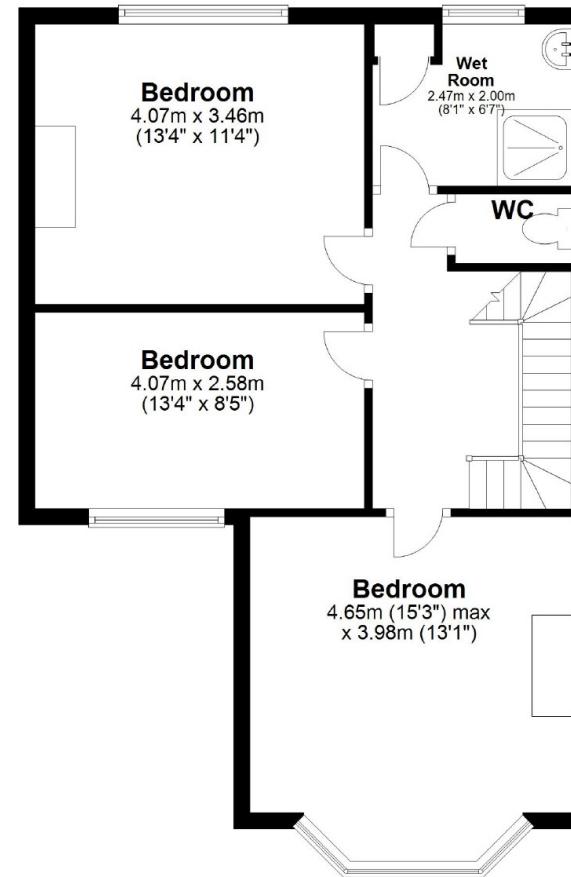
## Ground Floor

Approx. 61.9 sq. metres (666.7 sq. feet)



## First Floor

Approx. 55.7 sq. metres (599.8 sq. feet)



Total area: approx. 117.7 sq. metres (1266.4 sq. feet)

Plan and measurements are for guidance only.



PUTTERILLS

EST. 1992

[putterills.co.uk](http://putterills.co.uk) | 01727 225858 | [stalbans@putterills.co.uk](mailto:stalbans@putterills.co.uk)

You may download, store and use the material for your own personal use and research. You may not republish, retransmit, redistribute or otherwise make the material available to any party or make the same available on any website, online service or bulletin board of your own or of any other party or make the same available in hard copy or in any other media without the website owner's express prior written consent. The website owner's copyright must remain on all reproductions of material taken from this website.