



David
Astburys



- Ground Floor
- Private Entrance
- Separate Kitchen Diner
- South Facing Private Garden
- Character Throughout
- Good Storage

Raleigh Road, Harringay N8

Asking Price Of £450,000

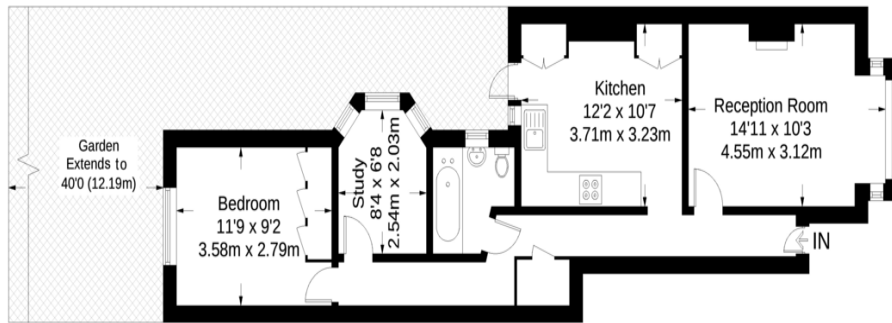
A charming two-bedroom ground floor flat situated in a semi-detached period building on the Haringey Ladders within 0.3 miles from Turnpike Lane Station (Piccadilly Line).

The apartment boasts its own private entrance and a south facing private garden. Further benefits include a eat in kitchen, large reception room, family bathroom and great storage throughout.

To be sold with a newly extended lease of approximately 171 years.

Raleigh Road

Approximate Gross Internal Area = 605 sq ft / 56.2 sq m



15 Park Road, Crouch End,
London, N8 8TE

<http://www.davidastburys.com>
0203 000 6787
crouchend@davidastburys.com

Agents Note: Whilst every care has been taken to prepare these sales particulars, they are for guidance purposes only. All measurements are approximate and for general guidance purposes only and whilst every care has been taken to ensure their accuracy, they should not be relied upon and potential buyers are advised to recheck the measurements.