



1 Albert Embankment, Nine Elms
London SE1

GARTON JONES.COM



1 Albert Embankment, Nine Elms
London, SE1

GARTON JONES.COM

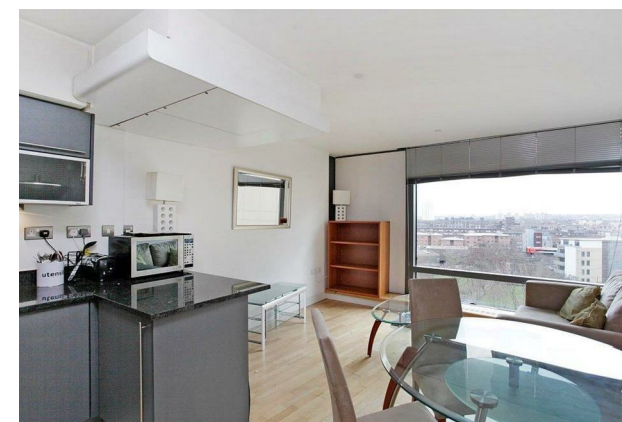
9 Albert
Embankment
London
SE1 7SP

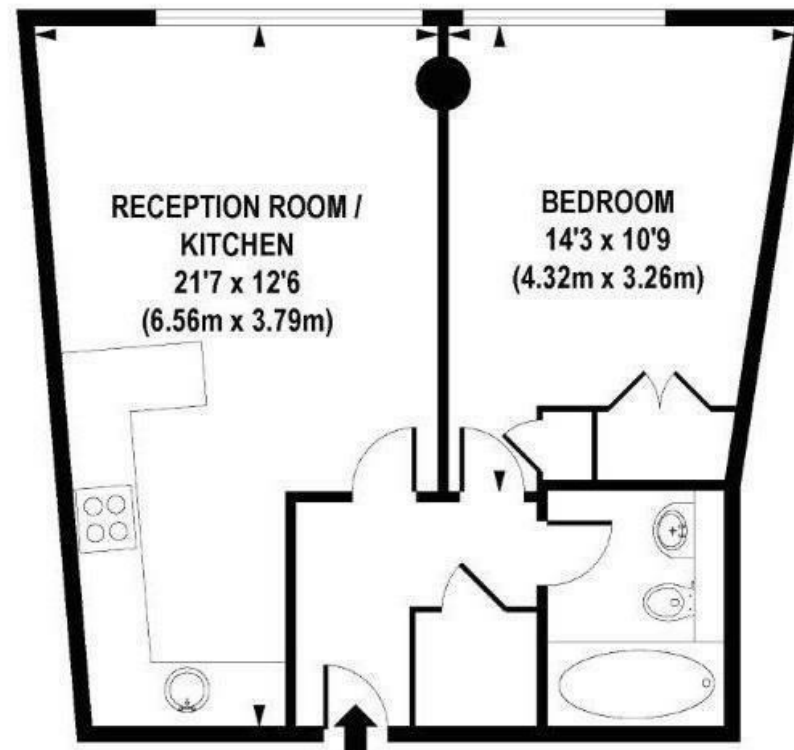
Lettings:
+44 (0) 20 7735 1888
nineelms@gartonjones.com
www.gartonjones.com

£495 Per Week

A double bedroom, luxury apartment to rent in this modern development located on the banks of the River Thames by Lambeth Bridge. This well presented property is offered furnished and further benefits from a reception room with full width floor to ceiling. There is a smart open-plan integrated kitchen, comfort cooling and wood flooring. Residents have the benefit a 24 hour concierge, secure underground parking and access to a gymnasium. Transport links are excellent with a frequent bus service on the door step and the rail and tube links of both Vauxhall and Westminster within a few minutes' walk. The amenities of London's trendy Southbank are also within easy reach. Parking available by separate negotiation.

- 1 Double Bedrooms, 1 Bathrooms
- Reception Room
- Open-plan Kitchen
- 24 Hour Concierge
- Secure Underground Parking
- Floor To Ceiling Windows In All Principle Rooms
- Residents Gym
- South Facing Aspect
- Close To The Excellent Transport Links of Vauxhall & Westminster





APPROXIMATE GROSS INTERNAL AREA 453 sq. ft / 42.06 sq. m

