



**Greenland Mews, Deptford**

**Asking Price £450,000 Freehold**

**OLIVER *OJ* JAQUES**  
EST.1986





# Greenland Mews, Deptford

A two bedroomed, mid-terrace house in a secure cul-de-sac with entry-phone operated gates, which is walkable from Surrey Quays station and many bus routes. The property has been recently refurbished and comprises two generous double en suite bedrooms, a first floor reception room with patio doors leading to a private balcony and a modern fitted kitchen / diner. Greenland Mews is a small private street managed by a well-respected local management company. This particular unit is freehold, avoiding the usual lease and ground rent issues associated with the price point. Offered to the market chain free with off street parking for one car.

- Two Double en Suite Bedrooms
- Newly Fitted Kitchen / Diner
- Separate Guest WC
- First Floor Balcony
- Securely Gated Cul-de-Sac
- Off Street Parking

South East London  
020 7231 5050

Email [southeast@o-j.co.uk](mailto:southeast@o-j.co.uk)

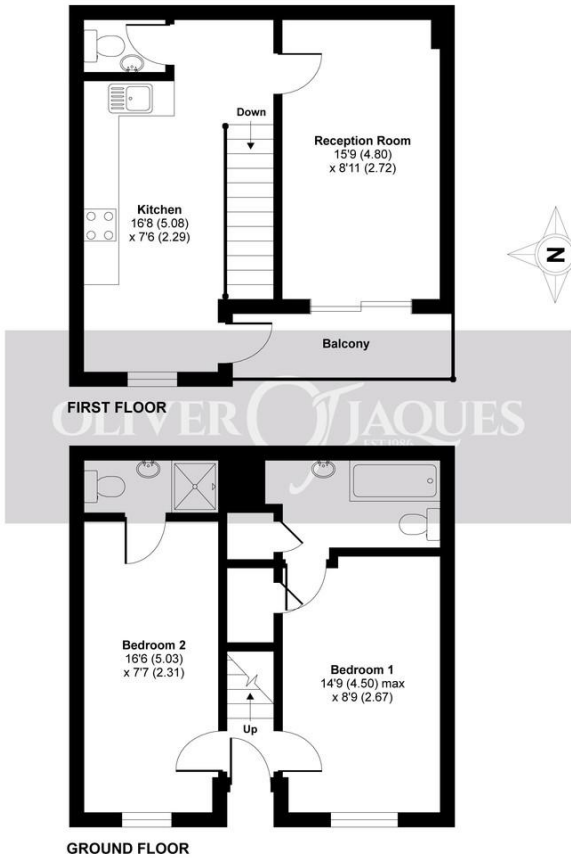
229-231 Lower Road, London, SE16 2LW

web [www.o-j.co.uk](http://www.o-j.co.uk)

Every care has been taken with the preparation of this brochure but it is for general guidance only and complete accuracy cannot be guaranteed. If there is any point, which is of importance professional verification should be sought. This brochure does not constitute a contract or part of a contract. We are not qualified to verify tenure of property. Prospective purchasers should seek clarification from their solicitor or verify the tenure of this property for themselves by visiting [www.landregisteronline.gov.uk](http://www.landregisteronline.gov.uk). The mention of any appliances, fixtures or fittings does not imply they are in full working order. Photographs are reproduced for general information and it cannot be inferred that any item shown is included in the sale. All dimensions are approximate. Walking times are taken from Google Maps and measured from the centre of the postcode, which may differ slightly from the individual property.

## Greenland Mews, London, SE8

APPROX. GROSS INTERNAL FLOOR AREA 760 SQ FT 70.6 SQ METRES



Whilst every attempt has been made to ensure the accuracy of the floor plan contained here, measurements of doors, windows and rooms are approximate and no responsibility is taken for any error, omission or misstatement. These plans are for representation purposes only as defined by RICS Code of Measuring Practice and should be used as such by any prospective purchaser. Specifically no guarantee is given on the total square footage of the property if quoted on this plan. Any figure given is for initial guidance only and should not be relied on as a basis of valuation.

Copyright nichecom.co.uk 2017 Produced for Oliver Jaques REF : 192192

