



Bower Place

Maidstone | ME16 8BG

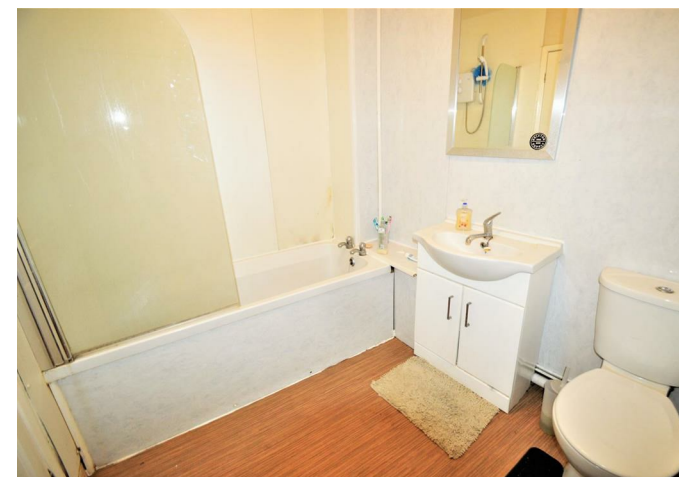
Century
Residential
Sales & Lettings

Bower Place , Maidstone, ME16 8BG

Century Residential are delighted to offer for sale with NO ONWARD CHAIN this three separate bedroom family home situated a short walk to Maidstone town centre and Maidstone West train station. The ground floor consists of a lounge, kitchen/dining area and separate family bathroom. The first floor has the three separate bedrooms. There is also a useful converted cellar. Externally there is a rear garden measuring approximately 120ft as well a courtyard garden to the front. Please call us now to arrange your appointment to view.

- Three Bedrooms
- No Onward Chain
- Ideal Investment Property
- Converted Cellar
- Close To Town Centre
- Large Rear Garden

Offers Over £260,000



Lounge

11'10 x 9'9 (3.61m x 2.97m)

Kitchen

12'3 x 10'0 (3.73m x 3.05m)

Bathroom

7'8 x 6'10 (2.34m x 2.08m)

Bedroom

12'11 x 11'9 (3.94m x 3.58m)

Bedroom

12'4 x 8'1 (3.76m x 2.46m)

Bedroom

11'3 x 7'11 (3.43m x 2.41m)

Cellar

12'8 x 10'10 (3.86m x 3.30m)





Century Residential
Sales & Lettings

18 - 20 High Street
Gillingham
Kent
ME7 1BB
01634 570057

www.centurylettings.co.uk
twitter.com/centuryresident
facebook.com/CenturyLR

PrimeLocation.com rightmove.co.uk Zoopla.co.uk [DPS](http://DPS.co.uk) [The Property Ombudsman](http://ThePropertyOmbudsman.co.uk)

Energy Efficiency Rating		
	Current	Potential
Very energy efficient - lower running costs		
(92 plus) A		
(81-91) B		
(69-80) C		
(55-68) D		
(39-54) E		
(21-38) F		
(1-20) G		
Not energy efficient - higher running costs		
	63	82
England & Wales	EU Directive 2002/91/EC	

Environmental Impact (CO ₂) Rating		
	Current	Potential
Very environmentally friendly - lower CO ₂ emissions		
(92 plus) A		
(81-91) B		
(69-80) C		
(55-68) D		
(39-54) E		
(21-38) F		
(1-20) G		
Not environmentally friendly - higher CO ₂ emissions		
	62	83
England & Wales	EU Directive 2002/91/EC	

Century Residential endeavour to maintain accurate depictions of properties in Virtual Tours, Floor Plans and descriptions, however, these are intended only as a guide and purchasers must satisfy themselves by personal inspection.